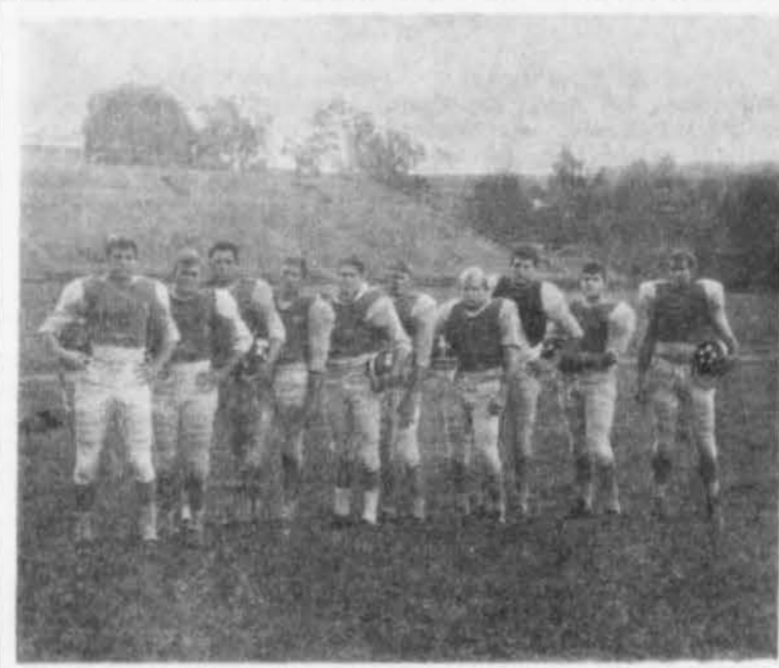


Probable Starting Lineups For H-S Game Tomorrow

Washington and Lee						
No.	Name	Pos.	Wt.	Ht.	Class	
14	Andy Bloom	QB	196	6-2	Jr.	
22	Buddy Atkins	HB	150	5-6	Jr.	
31	Bill McDavid	FB	213	6-2	Jr.	
44	Tom Pittman	HB	170	5-10	Jr.	
54	Jay Clarke	C	190	5-11	Soph.	
63	Terry Griffin	G	185	5-10	Jr.	
68	Skip Jacobsen	G	195	6-0	Jr.	
70	Ben Schwartz	T	210	6-3	Soph.	
71	Logan Bullitt	T	215	6-0	Sr.	
80	Hank Wilson	E	181	6-0	Soph.	
83	Haskell Dickinson	E	180	6-1	Soph.	

Hampden-Sydney						
No.	Name	Pos.	Wt.	Ht.	Class	
22	Jimmy Lee	B	165	5-9	Jr.	
11	George Summers	QB	180	6-1	Sr.	
24	Phil Rome	B	185	5-11	Jr.	
44	Gary Wheeler	B	185	5-10	Soph.	
59	Steve Martin	C	205	5-11	Sr.	
64	Mike Vaughan	G	180	5-8	Soph.	
68	Bryce Jewett	G	195	5-11	Jr.	
72	Bill Chewning	T	192	6-2	Sr.	
77	Pose Shaw	T	210	6-2	Soph.	
81	Chuck Edwards	E	180	6-0	Fr.	
89	John Mack	E	185	6-0	Jr.	



SOPHOMORE GENERALS compose a major part of W&L's football hopes on their shoulders as the team prepares to face Hampden-Sydney tomorrow.

W&L Seeks First Victory As H-S Invades Saturday

This Saturday at 2:00, Washington and Lee plays Hampden-Sydney on Wilson Field. W&L will go into the game with an 0-1 record, while Hampden-Sydney has a 1-1 record. The odds are going that W&L is the underdog, but Coach Lee McLaughlin says that "we have a very good chance to win despite the experts and the odds."

Hampden-Sydney has most of its last year's squad returning. The defensive unit is practically the same, and their offensive unit is said to be in good shape. Our starting line-up will be basically the same, except for injured players, Britt McJunkin, John Wolfe, and Bill Sledge.

some 30 times last week, and more than likely will put the pigskin in the air this Saturday. Last week quarterback Andy Bloom did not get good pass protection and therefore had 7 passes intercepted. After looking at the films of the game, Coach Mac feels that the blocking problems have been worked out, and this week should be a different story. The Tigers of Hampden-Sydney will not have an easy opponent in the Generals of W&L.

This week the Frosh play Woodberry Forest. Coach Mac believes that this year's frosh are "better than average." If the Freshman team develops like it is hoped to, the Generals could have a very favorable future ahead of them.

When asked about the morale of the team Coach Mac replied, "The boys are really up for the game. They are determined to win and have worked hard in practice this week. It's an important game."

Coach McLaughlin summed up tomorrow's game with Hampden-Sydney saying, "It should be a very interesting game, because both teams are not afraid to throw the ball. School spirit remains to be seen. Out of 1300 fine young men, there ought to be good support. We welcome and appreciate all student support."

Pfavored Pfeiffer Falls To W&L Booters 5-1; R-M Game Today

By HOWARD HERMAN
The Washington and Lee Generals, led by Scott Fechnay and Jack Horowitz, each with two goals, upended the Pfeiffer College Falcons 5-1 Tuesday. The Generals scored first, early in the second period, and never surrendered the lead.

substitute freely in the fourth period as the entire varsity squad got into the act.

Half the scoring took place in the second quarter after a dull first period, as W&L took a halftime lead of 2-1. Scott Fechnay scored the first two goals, both on assists by Gil Turner. Fechnay headed in Turner's corner kick at 2:10 of the period and booted the next one in at 7:29.

Lyles gave credit to his entire team, stating, "It was certainly a team effort all the way; it was a helluva win and one of the big three we had to take." He cited Randolph-Macon and Lynchburg College as the other two key games.

The Falcons lone goal came at 10:19 of the second quarter as their two co-captains combined for the score. Danny Smith passed to Ross Hagstotz who headed the ball in for the tally.

The Generals coach went on to say that Allan Craig and Fred Skinner "played their best games up-to-date." He pointed out the fine games played by sophomores Jack Horowitz, Gil Turner and goalie Tom Mitchell in addition to the usual strong games played by his "iron-men Brad Shinkle, Bob Smith, Scott Fechnay, and Fred Skinner."

The next goal came at 19:50 of the third quarter when Jack Horowitz kicked a Brad Shinkle pass in to score for the Generals. The home team scored their last two goals early in the fourth quarter. Shinkle converted Fechnay's pass into a goal at 5:15 of the last period. Horowitz scored his second goal a minute-and-a-half later. The officials gave credit for the score to Shinkle who appeared to head the ball into the net. Shinkle, though said he deflected the ball after Horowitz had put it into the net. Give credit to Horowitz, unassisted. Coach Joe Lyles was able to

The Pfeiffer coach congratulated Coach Lyles telling him that the (Continued on page 4)

Statistics Of W&L-R-M Game

W&L	Opponent			
2	1st Downs	9	7 Had Intercepted	2
7	1st Downs Rushing	2	132 Net Yds. Passing	28
5	1st Downs Passing	0	73 Plays From Scrimmage	60
14	Total 1st Downs	11	136 Total Offense	228
34	Rushing Plays	52	0 Fumbles	6
4	Net Yds. Rushing	200	0 Fumbles Lost	3
0.1	Average Rushing Gain	4.0	7 Punts	5
39	Passes Attempted	8	0 Punts Had Blocked	0
18	Passes Completed	3	275 Total Yds. Punted	163
			39.3 Average Yds. Punted	32.6
			85 Total Yds. Kickoff Ret.	52
			11 Total Yds. Ret.	91

Notice

Coach Dana Swan announced today that there will be a meeting of all students interested in lacrosse on October 4, at 7:30 p.m. in the gymnasium. This includes all past, present and future lacrosse players.

I-M aGo-Go

Koufax To Replace 'Love Of Life'

By OAK SEIBERT
Dear General Sarnoff,
Once again the time has come for day-time TV to rule the ratings—The World Series is almost here. For a whole week Sandy Koufax and Company (unless Pittsburgh gets the lead out) and the Robinson boys will be selling razor blades in place of the soap suds usually peddled by Love of Life. As the World Turns, and afternoon seminars.

Unknown to many is that there are two World Series in the United States this year. Radio station WNBC in New York has for the past few years presented the Dream World Series, a seven game series between National

and American League teams made up of the all time greats of the respective leagues. Information on each player was fed into a computer and out of this a game was played, with the computer calling the shots. But WNBC didn't stop there. Starting last Monday a game has been played on the air each night using the information from the computer. The games seem amazingly realistic, with an announcer doing the play by play and the sounds of the crowd in the background. Starting for the American League were Ty Cobb, Charlie Gheringer, Babe Ruth, Lou Gehrig, Joe Dimaggio, Yogi Berra, Phil Rizzuto, and Brooks Robinson (he'll also get in the real one). Their pitchers have been Bob Feller, Lefty Grove, and Lefty Gomez. The National League, which won the first two games 3-2 and 8-2, fielded a team of Rogers Hornsby, Pie Traynor, Stan Musial



Seibert

(Continued on page 4)

'Ring-tum Phi' was Cheer

The name "Ring-tum Phi" sounds more like a yell than the name of a college paper. It should. It is.

Back in 1897, one of the Generals' yells went like this:

Ring-tum Phi
Sticker-bum
We're hot stuff
From Lexington
Rah! Rah! Rah!
White and Blue
Whoopla, whoopla!
W. L. U.

Not only was that a college yell back in 1897, but it was the only one Washington and Lee University had.

So, naturally or not, when J. Sam Slicer and Gordon R. Houston founded the paper in that year they chose the name Ring-tum Phi.

BUFFALO CREEK CLUB
Dance every Saturday nite
4 miles S. of Lexington
on Route 11
Reservation
463-3096

For Rent
New Efficiency Apts.
for two
Twin Beds, Living Room,
Bath, Kitchenette, and
Large Closets
9 miles out at junction of
Maury River and Buffalo Creek
258-2149

VISIT
Neo's House of Beef
Just North of Lexington
on U. S. 11
Famous for
Steaks Chops Seafood
Call for Reservations
463-4122

GUNS AND ACCESSORIES
Buy, Sell, or Trade
Rockbridge Pharmacy
(Glasgow, just off the road to Lynchburg)
258-2930

Minor Tune-up Special
We put your engine in shape for winter driving ahead \$ 6.95
6 cyl. U.S. autos plus parts
Reset timing and points, adjust carburetor and choke, clean fuel bowl and air filter, check starter—volt regulator—spark plugs—cyl. compression—generator output—battery—ignition wires. 8 cyls. add \$2.00.
Rabe Oil

See these New **REMINGTON SHOTGUNS**

MODEL 1100 AUTOMATIC
• BIG FIVE SHOT CAPACITY
• UP TO 55% LESS KICK
• NEW SCRATCH AND WEATHER RESISTANT WOOD FINISH
• BEAUTIFUL FINE-LINED CHECKERING

MODEL 870 PUMP ACTION
• BEAUTIFUL CHECKERING
• EASY TAKE DOWN
• INTERCHANGEABLE BARRELS
• 5 SHOT CAPACITY
• RUGGED, DEPENDABLE, LIGHTWEIGHT

TAKE ALONG A BOX OF POWERFUL REMINGTON PLASTIC SHELLS

Remington
DU PONT

Pres Brown's

Dance Plans
On Sale at Co-op
Until
October 12

Wanted
Combination
Church Organist
and
Choir Director
(pipe organ)
For Sunday Morning
Worship Services
at St. John's
Methodist Church
in Buena Vista
Call to arrange interview
261-2145 (9 a.m.-5 p.m.)
261-2522 (after 5:30 p.m.)

Swingline RIZZLEMENTS

[1] How far can a dog run into the woods?
(Answers below)

[2] A storekeeper had 17 TOT Staplers. All but 3 were sold. How many did he have left?

This is the
Swingline Tot Stapler

98¢
(including 1000 staples)
Larger size CUB Desk Stapler only \$1.49

No bigger than a pack of gum—but packs the punch of a big deal! Models available everywhere. Unconditionally guaranteed. Made in U.S.A. Get it at any stationery variety, book store!

Swingline INC.
Long Island City, N.Y. 11101

Openings Features Pickett

(Continued from page 1)

nightclubs. In addition to his singing talents, Hamilton is a respected artist and sometimes boxer.

Wilson Pickett, slated for the concert Saturday, Oct. 14, has written the majority of his own hits Originally from Prattville, Alabama, he got his start as a gospel singer in Detroit. Pickett's first break came in 1959 with a group called the Falcons.

"In Midnight Hour," Pickett's first album, contains many of his top recordings such as "For Better or

Worse" and "I'm Gonna Cry."

The Fabulous Five from Greensboro, North Carolina are scheduled to appear with Pickett.

Cox mentioned two main reasons for the switch. First of all, he said, Redding has not yet returned his contract for Openings. "He has had over three months to say 'yes' or 'no' to our \$3000," Cox explained. "We cannot afford to wait forever for some big-time entertainer... should he say 'no' in the end, the school is stuck without entertainment." A second reason given by Cox was that Wilson Pickett "has a similar show to that of Otis's and should prove to be just as enjoyable.

In addition to explaining the entertainment change, Cox also made clear the Dance Board's position on the Executive Council petition to abolish Saturday classes. "I feel that the abolition of Saturday classes would in no way cause people to leave Lexington and thereby affect the turnout for the dance and concert," said Cox. "We have sold over 920 dance plans and I can't imagine students who have paid their money 'skipping out' on such entertainment as this. The Dance Board definitely favors the abolition of classes on Saturday of Openings weekend."

Dance plans will be on sale in the Co-op until October 12. If a person who already holds a dance plan desires tickets for a guest, the dance tickets may be purchased for three dollars, and the concert tickets for five dollars. Otherwise, tickets for the dance and concert will be five and eight dollars respectively.

Students will not be admitted to either affair unless a dance plan or ticket is presented at the door. Suits are required for admission to the dance.

Debate

(Continued from page 1)

demonstration debate for the parents on Parents' Weekend. All of this practice, Mr. Chaffin said, will certainly get the debaters ready for this year's first competitive tournament to take place at the University of Detroit on October 22-23.

Mr. Chaffin commented that he feels this year's topic was quite broad, but he definitely looks forward to a good season.

EC Approves

(Continued from page 1)

Cars For Need?
A proposal that scholarship students be allowed to have cars was submitted to the subcommittee for final drafting. The final version will be read and voted upon at a future meeting. A "subcommittee on sparsation" was also formed to study a possible constitutional revision would separate the judicial and legislative branches of the student government organization. This committee includes Richard Nash, junior committeeman Gil Faulk, and Doug Hall, sophomore committeemen.

The agenda finally included the reports of Cold Check and Assimilation Committee chairmen.

I-M aGo-Go

(Continued from page 2)

Willie Mays, Bill Terry, Roy Campanella, Mel Ott, and Honus Wagner, with the pitching being handled by Sandy Koufax, Carl Hubbell, and Christy Mathewson.

But back to the real World Series. If the Dodgers make it they will be favored to beat Baltimore. Both teams have several players among the walking wounded, but Baltimore's shaky pitching staff is down to two regular starters, which will really hurt the Birds' chances. However, being a long-suffering Baltimore fan, I'll take the Birds in seven games, with Brooks Robinson leading the way.

One last note: W&L plays its first home game tomorrow and it would be great to see a large crowd out there for once. Contrary to popular belief, there is no rule which states you must leave at the end of the first half. Rumor has it that most games will have a second half again this

year. Just ask Guilford. Have fun this weekend and don't pass at the game.

Sincerely,
T. S. FACTOR

Pfeiffer Pfalls Pflat

(Continued from page 2)

Generals "had more hustle than we did."

The W&L coach explained that his strategy was to "plug up the middle half of the field." Lyles said the Generals also "banked on keeping good field balance as well as team unity and lots of talk." He and co-captain Shinkle agreed on the success of the strategy.

The win left the varsity with a two win, no loss record going into this afternoon's important game with Randolph-Macon. The Generals defeated the Yellow Jackets last year 2-1.

SUNDRIES

(Continued from page 1)

draft exam, or a student must meet specified class-rank requirements: for freshmen, the top half of the class; for sophomores, the top two-thirds, and for juniors, the top three-quarters. Seniors must achieve an 80 on the exam or rank in the top quarter of their class.

Apar's Faculty

(Continued from page 2)

Journalism Department of the University of Byzantium. For years he has been a recognized expert on the Cartoon and has been brought in to shore up that sagging section of W&L's Journalism Department. He will teach Journalism 002, "A Comparison and Contrast of Lil' Abner and Peanuts."

Record Spending

(Continued from page 1)

sible over the years to keep student charges relatively low in comparison to the total operational cost. Designated endowments have provided a significant source of income for scholarships, professorships and faculty salaries.

At the listed value when they were presented to the University, endowments now total \$12,000,000. As of June 30, 1965, if all the endowment investments (stocks, bonds, real estate mortgages, personal notes, etc.) were cashed in, the school would be left with \$20,500,000.

Without the endowments, the tuition fees might be almost twice as much as they are at present. The total operating cost per student is over \$2400, of which the student pays \$1400.

Letters To The Editor . . .

Scholars and Athletes

(Continued from page 2)

who wants it that ineffable but indispensable element of a man's education which can only be gotten through participating in competitive sports. This is exactly what the W&L program accomplishes and exactly what the program of Behemoth U. (or Texas Western?) does not accomplish.

Do you then propose that we raid financial resources which already cannot enable us to compete in the academic scholarship field or should we increase tuition \$200.00 a year? And for what? To hire a group of semi-pro athletes for the occasional entertainment of bona-fied students who might otherwise be playing ball? Be serious.

I've taken pride and enjoyment in the present program, and I haven't had to support an uninterrupted series of "small time losers" either. What about the '61-63 football club—won 22; lost 4—with three Phi Beta Kappas in the starting line that graduated in '63; what about the '64 soccer club? The

only small time losers in the W&L athletic program are the students who deride it because they haven't the energy to take part in it. They might as well be fifty rows up in the stands at South Ben contributing to the spectator explosion.

Yours truly,
ODELL S. MCGUIRE

'Search For Controversy'

(Continued from page 2)

flavor of our university as much as if we abolish the honor system. Any student who feels an urgent need for the "pride" that comes from having a team in the top ten can easily transfer to one of the many big state schools that can boast of having a famous football team but little else.

CORBET BRYANT

Deferred Rush

(Continued from page 1)

is invited to eat at the house or to attend a combo party, for which a date is usually arranged. He may also be asked to a specific rush date.

Deferred rush extends for as long as the student remains enrolled at Washington and Lee as a non-fraternity member.

Any student who depledges must observe a two-week period of no contact, after which he is eligible for deferred rush.

IFC BUSES

The IFC buses will run to Randolph-Macon, Sweet Briar, Mary Baldwin, and Hollins this Saturday. They will leave from Red Square promptly at 11:45—the fare will be \$1.50.

Ted's Steak House

Prime Steaks
Excellent Seafood

Favorite of Students for Years

Route 60, Buena Vista
261-6110

FOR YOUR EXTRA PIECE OF FURNITURE

See

Varner and Pole

LYRIC

NOW through SATURDAY

BOGART ROBINSON BACALL
KEY LARGO

STARTS SUNDAY

THE GUNS OF NAVARONE

STATE
LEXINGTON, VA. SEBAST 3-9414

Air Conditioned

SUN.-MON.-TUES.

Matinee Sunday
2 and 4 p.m.

Sean Connery
Joanne Woodward
Jean Seberg
"A Fine Madness"
TECHNICOLOR® From WARNER BROS.

ROBERT E. LEE

BARBERSHOP

OPEN from 8:00-5:30

TOLLEY'S PHARMACY

Prescriptions Filled
Immediately

PURCHASE DRUGS
HO 2-2211

Bierer's Pharmacy

Corner of Main Street
and Washington Street

CENTRAL LUNCH

TRY OUR FAMOUS
SWISS BURGERS

Serving Food and Beverages

A Wide Variety of Domestic
and Imported Beer Served
and Delivered
Telephone 463-2834

Red Front Gro.

ABC LICENCE 2268 OFF
FOOD—ICE
on N. Main

R. L. Hess and Bro.

JEWELERS
Lexington, Virginia
463-2833

THE BOOK SHOP

(Downtown)
Our School Supplies
Are Inexpensive

STUDENTS!

Make this your headquarters for Good Food
and Service

We have meal tickets at savings to you

TRY OUR NEW TAKE OUT SERVICE

3 pieces Chicken, Slaw, French Fries, rolls and
Butter, Boxed to go \$1.10

Southern Inn



OUR FUTURE IN COLOR TV LOOKS ROSY

The Color TV market is in full bloom—and GT&E along with it.

The reason? Our Sylvania subsidiary has made dramatic advancements in the performance standards of color TV sets.

In developing these new receivers, Sylvania drew upon the vast research facilities of GT&E. One result: the Sylvania

"Color Bright 85" picture tube using a revolutionary new red phosphor that increases brightness on the average of 43 percent over the industry standard.

Our Sylvania Electronic Components Group is one of the two largest suppliers of receiving tubes and picture tubes... used by 7 out of 10 TV set makers.

As a major factor in all phases of communication through sight and sound, it is small wonder that GT&E has become one of America's foremost corporations.

If you're looking for a young, aggressive company with no limit to its growth, you may wish to view GT&E in the light of your own future.

GT&E

GENERAL TELEPHONE & ELECTRONICS

12000 AVENUE, NEW YORK 10017 • 212 321-3000 • General Telephone & Electronics Corporation • General Telephone & Electronics International • General Telephone Electronic Co. • Automatic Exchanges • Central Offices • Special Service Facilities