

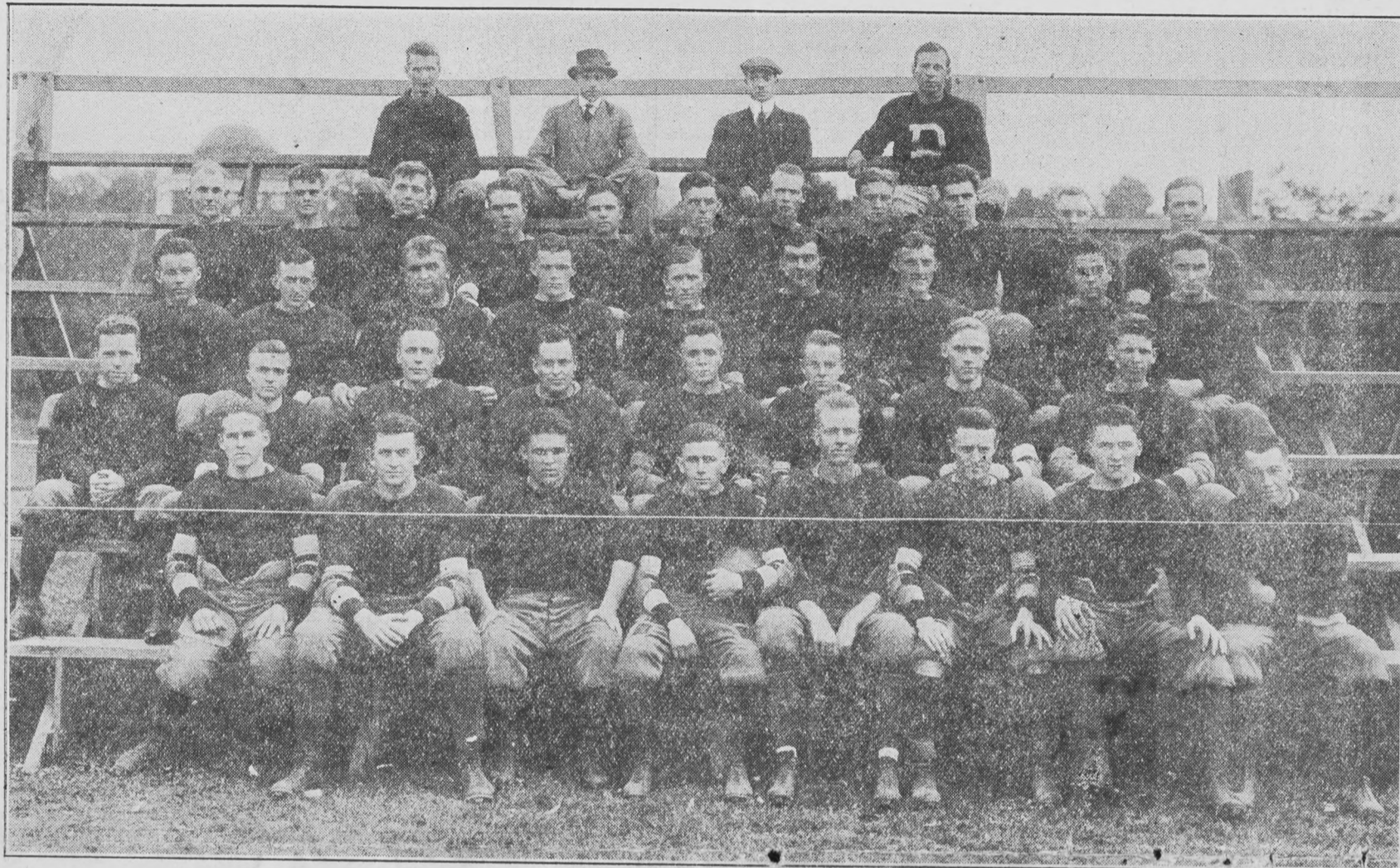
The Ring-tum Phi

BY THE STUDENTS AND FOR THE STUDENTS

VOL. XVIII

WASHINGTON AND LEE UNIVERSITY, TUESDAY AFTERNOON, NOV. 3, 1914

No. 6



THE MIGHTY WASHINGTON AND LEE SQUAD

Top Row—Assistant Coach Raftery, Assistant Manager McDougle, Manager Sam Laughlin, Coach Elcock. Second Row—MacGregor, Bagley, Krusen, Moses Paxton, Sherris, Adams, Graham, Hallman, Richardson, Izard. Third Row—Collins, England, Camp, McHenry, Milner, Harris, Myles, Vads-worth, Trigg. Fourth Row—Dingwall, Smith, Barrow, Beuhring, Young, Seeley, Shultz, Miles. Bottom Row—Harrison, Scarry, Simms, Capt. Donahue, Bryan, Gallagher, Pierotti, Sweetland

GENERALS ALLOW V. P. I. TO SCORE

SWARTHMORE WILL PROVE WORTHY FOE

Pennsylvania Eleven is Fast and Heavy—Has Wonderful Back-field

The first inter-sectional clash of the season for Washington and Lee will come Saturday when the mighty Swarthmore University eleven of Pennsylvania will be encountered in Lynchburg. The Generals will hardly be in the pink of condition for the fray, but are expected to have a bitterly fought game. In order to enable the students to witness the conflict, President Henry Louis Smith has granted a half holiday Saturday. The athletic authorities have arranged to have a special train to transport the Generals to the scene of battle.

Swarthmore has one of the swiftest elevens in the east, with a wonderful backfield composed of Murch, Cornog, Locke and Clime. Clime is reputed to be one of the greatest punters in the east and should prove to be a worthy rival to "Cy" Young. In weight, Swarthmore will outpoint the Generals slightly. Five of the eleven players are newcomers, while the other six are veterans.

While Swarthmore has not met with wonderful success this season,

Continued on page 8

Tech Forces Generals to Fight Hard to Gain Decision in Annual Clash

FIRST HALF		W. & L.	V. P. I.
Yards gained by line plunges	49	56	
Yards gained on end runs	32	26	
Yards punted	245	175	
Average distance of punts	49	48	
Run back kicks	25	18	
Forward passes attempted	4	3	
Forward passes successful	2	0	
Yards gained on forward passes	32	0	
Yards penalized	59	15	
SECOND HALF		W. & L.	V. P. I.
Yards gained on line plunges	46	73	
Yards gained on end runs	228	52	
Yards punted	355	290	
Average distance of punts	51	44	
Run back kicks	51	25	
Forward passes attempted	5	2	
Forward passes successful	1	0	
Yards gained on forward passes	18	0	
Yards penalized	10	60	

After having withstood the onslaughts of five determined elevens without yielding a touchdown, Washington and Lee's goal line was crossed by Virginia Polytechnic Institute in the opening period of the annual encounter at Roanoke Saturday. Displaying a surprisingly strong attack, the Tech eleven forced the Generals to fight desperately to gain a 7 to 6 decision in the battle. Over confident that V. P. I. would crumble before their hitherto invincible attack, the Generals were keenly surprised when the cadets proved so strong and lost their "punch."

The Generals' team work was miserable. The Tech linesmen opened

up large holes in the line for their backfield, while they blocked the advance of the Washington and Lee backfield. Young, Beuhring, Sweetland and Gallagher were checked by vicious tackles without consistent advances. The interference was decidedly off color. On the other hand, V. P. I. fought headily and exhibited teamwork that merited results.

The touchdown registered by V. P. I. came in the first few minutes of playing the first quarter. After Young had received the kickoff, he fumbled on the first down and the pigskin was recovered by V. P. I. on the twenty five yard line. Penalties virtually endowed the cadets with the score, as two times five yard penalties for offside play were inflicted together with a penalization of nine and a half yards for Pierotti's alleged slugging. Saunders carried the ball over on a short plunge through the line. The try for goal went awry and this latter proved to be the fateful failing.

General Take the Lead

The Generals assumed the fore in the conflict in the second quarter. Gallagher made a sensational thirty

Continued on page 2

THANKSGIVING DANCES PLANNED

Soph. Cotillion First on Nov. 30
—Cotillion Club German Follows

The first social event on the University calendar will be the Sophomore Cotillion. This dance, which will open the college festivities, will be on Monday night, Nov. 30th, while the Cotillion club german will follow on Tuesday evening, Dec. 1st. Jesse B. Wadsworth of Gadsden, Ala., will lead the Sophomore Cotillion with Miss Mary Byrd of Shreveport La., while T. S. Kirkpatrick of Lynchburg, will lead the Cotillion german with Miss Elizabeth Anderson of Lynchburg.

Preparations for the dances have been begun. Ben Rives, president of the Sophomore class, has appointed his committees to arrange for the dance and has submitted the various matters of pertinence to the members. The committees are:

Finance—H. C. Holden, chairman; P. D. Pickens, M. B. Rogers, J. L. Williams, Adrian Boyd, T. C. Waters.

Floor—W. R. Burton, W. J. Cox, J. M. Schmoele, W. C. Hagan, H. K. Young.

Continued on page 4

GENERALS ALLOW V. P. I. TO SCORE

Continued from page 1

yard return of Vaughn Lloyd's forty yard kick, bringing the pigskin with twenty eight yards of the goal line. Forward passes to Miles and Harrison failed, but Shultz received a spiral from Gallagher and advanced thirteen yards. Milner, who was dispatched to relieve Beuhring, plunged five yards onward, and added another yard on the second down. Buck Sweetland penetrated the line for six yards, within a foot of the goal line. Gallagher carried the ball over for a touchdown. Young's toe propelled the oval between the uprights for a goal that won the game.

The third and fourth periods were scoreless. When the situation seemed desperate in the third quarter, Captain Donahue, who had hobbled to the scene of the conflict on crutches, donned his togs and appeared at quarterback in an effort to prevent a downfall. The nervy act seemed to strengthen the team, but twice Tech threatened to take the lead when drop kicks were essayed. Just before the last second of play in the fourth quarter, Miles intercepted a forward pass and ran sixty five yards. "Hook's" Moore downed the big tackle just three feet from the goal line.

Big Ted Shultz was a bulwark of strength at left tackle, but otherwise the Generals as individuals were mediocre. Gallagher made two or three sensational returns of punts. Vaughn Lloyd and Saunders bore the brunt of V. P. I.'s attack and were largely responsible for the success of the Techs.

Penalties were frequently imposed and many players were disabled by vicious tackles. Washington and Lee suffered more heavily from penalties in the first half than did V. P. I., but the order was reversed in the last two periods. For the most part, the Generals were outplayed.

Techs Start to Advance

The Generals won the toss and elected to receive the kick. Vaughn Lloyd kicked 35 yards to Young, who fumbled, but recovered and advanced 2 yards. On an end run, Young fumbled and V. P. I. gained the ball. Saunders failed to gain, but Peake made 5 yards. Harrison was offside and a penalty of 5 yards, the first of a series that virtually endowed V. P. I. with a touchdown, followed. Saunders plunged 3 yards, but Beuhring threw Peake for a 4 yard loss. Rives relieved Taylor. Referee Gass adjudged Pierotti slugging and penalized the Generals half the distance to the goal, about 10 yards. Barrow was substituted for Pierotti at center. Saunders made two plunges that netted 4 yards, and again W. and L. was offside, a penalty of 5 yards being inflicted. Full back Saunders plunged 1 yard, within a foot of the goal line and on the following down scored a touchdown. In attempting to kick goal, Saunders failed—a fatal failing.

The remaining twelve minutes of the first quarter did not produce a touchdown. Vaughn Lloyd kicked 35 yards to Young, who advanced 12 yards to the 37 yard line. Young lost 10 yards on an attempted end run. Macon was nailed in his tracks by Shultz, when he received Young's 48 yard boot. Macon made 3 yards around left end, while Saunders ripped the line for 3. Macon was held without advance. Peake was held and forced to yield to the Generals. Beuhring plunged a yard

while Young advanced 1½. Sweetland battered the line for 7 yards, and Beuhring made first downs. Gallagher's forward pass to Miles netted 11 yards. Sweetland advanced 3 yards, but Young was held without gain. Gallagher added a yard off tackle, but surrendered the possession of the ball when his forward pass to Beuhring failed. Vaughn Lloyd kicked 50 yards to Gallagher, who returned the oval 7 yards.

Young punted 38 yards to Vaughn Lloyd, who returned it 8 yards. Miles was injured during the play, but gamely remained in the game. Vaughn Lloyd was held without advance and rendered unconscious by the force of the tackle. Peake did not gain around right end, forcing Vaughn Lloyd to kick to Gallagher, who fumbled, but recovered. On the first down Gallagher did not advance, but Beuhring plunged 6 yards, and was followed by a buck by Young, which just failed to give first downs. On the fourth trial, Sweetland insured downs. Graves' vicious tackle held Sweetland, while Beuhring was also downed. Young skirted right end for 22 yards. Beuhring added 3, bringing the oval within 35 yards of the goal line. Saunders was injured, being relieved by Funkhouser. As Young spurred 5 yards onward, the quarter closed.

That Second Quarter

The second quarter saw the Generals assume the lead. Gallagher and Beuhring hit the line, but failed to make downs. Shultz threw Peake for an 8 yard loss, but W. and L. was penalized 5 yards for being offside. Peake gained 8 yards, but another penalty on Miles for offside play followed. Peake advanced a yard, while Macon darted over tackle for 11 yards. Engleby relieved Captain Peake on the next down, when a terrific tackle brought him to the ground after 2 yards advance. Engleby's forward pass to Vaughn Lloyd failed, while Gallagher intercepted the next pass, only to return it when Miles was adjudged offside, and a 5 yard penalty exacted. Macon made 5 yards, but V. P. I. held and was penalized 15 yards. Again Engleby's forward pass failed. Gregory relieved Rives at left end. Vaughn Lloyd punted 45 yards to Gallagher, who returned 3 yards, to the 40 yard line.

Gallagher and Young were held without advance, while Sweetland lost 2 yards. Young sent a marvelous punt for 60 yards to Macon, who fumbled, but recovered on the 8 yard line. Vaughn Lloyd booted a 40 yard spiral to Gallagher who returned 30 yards. Milner relieved Beuhring at fullback. Forward passes to Miles and Harrison were futile, but Shultz advanced 13 yards on a heave from Gallagher. Milner plunged 5 yards, while he added on the second down. Sweetland battered the Techs for 6 yards, just failing to cross the goal line. Gallagher carried the ball over on the following down. Young kicked goal.

Vaughn Lloyd kicked off and received a return punt, following three unsuccessful attempts to gain. The quarter ended as Young punted.

Donahue Discards Crutches

The supporters of the Generals were confident that the old time punch would return in the second half, while V. P. I. made a series of changes. Dixon relieved Macon. Other substitutions were: Taylor for Gregory; Somerville for Williams; Moore for Cottrell; Henderson for Montague, and Caffey for Benedict. Henderson kicked 45 yards to Sweetland, and a return of 11 yards followed. Milner failed, while Young



Point one!

Our young men's suits are cut on smart and graceful lines.

Point two!

Fabrics identical with those of the best merchant tailors.

Point three!

Prices moderate—"your money back" if anything goes wrong.

Why hesitate?

Young men's Fall suits, \$18 to \$45.

At Lexington hotel—

Monday, November 16th
Tuesday, November 17th

Mail orders filled meantime. Write for sample and simple self measurement blank.

ROGERS PEET COMPANY

Young Men's Outfitters
NEW YORK CITY

STRAIN & PATTON

Clothiers

AND

Gents' Furnishers

Main Street

Lexington, Va.

—THE—

Bank of Rockbridge

Cordially offers the young men of Washington and Lee the facilities of this Bank. We are well equipped to handle your drafts and checks and will welcome you business whether it be large or small.

For Safety and Service

BANK OF ROCKBRIDGE

KEUFFEL & ESSER CO.

127 Fulton Street, NEW YORK

General Office and Factories, HOBOKEN, N. J.

CHICAGO

ST. LOUIS

SAN FRANCISCO

MONTREAL



Mathematical and Surveying Instruments
Drawing Materials Measuring Tapes

We have the most complete line of DRAWING INSTRUMENTS in various grades. Our Engine-divided Slide Rules enjoys an excellent and wide reputation. We carry every requisite for the drafting room. Special prices to students. Free catalogue on request.

Continued on page 3

**GENERALS ALLOW
V. P. I. TO SCORE**

Continued from page 2

was thrown 4 yards on a mixup in signals. Gallagher did not advance, while Young kicked 40 yards to Engleby, who returned it 3 yards. Caffey made 10 yards. Engleby plunged 4, while Engleby made 7 yards around Harrison. Engleby could not gain, but Funkhouser circled right end for 5 and then made first downs with a 6 yard plunge over right tackle.

The situation was growing desperate, so Donahue hobbled on the field and took his place at quarter. Engleby was thrown for a loss of 5 yards, Harvey replaced Huddle and attempted a drop kick from the 32 yard line, but failed. He was relieved by Oppenheimer, a hefty halfback. Seeley replaced Simms at left end. Young punted 50 yards, after the ball was placed in scrimmage. Vaughn Lloyd took advantage of Donahue's injury and punted to him. Young gained 4 yards. A V. P. I. linesman roughed Donahue and a 15 yard penalty followed. Sweetland advanced a yard, but Young was checked and injured. As he was carried from the field, Smith went in at half. Gallagher gained 5 yards but Smith fumbled, Vaughn Lloyd recovering. Caffey annexed 5, while Dixon was thrown by Shultz for 4. Vaughn Lloyd then punted 50 yards to Donahue, who did not advance. Smith returned with a 50 yard punt to Engleby, who spurted onward 6 yards. Dixon skirted left end for 6 yards, but Funkhouser failed. V. P. I. was penalized 15 yards for holding. Then Vaughn Lloyd kicked 25 yards to Gallagher, who returned it 25 yards. Smith then punted 48 markers to Engleby, whom Sweetland nailed 81 yards from his desired goal line. Gregory relieved Taylor. Following an exchange of punts, the quarter ended with the pigskin in V. P. I.'s possession 57 yards from goal.

Techs Attempt Field Goal

Oppenheimer fumbled following Shultz' tackle, but recovered the ball. Then Vaughn Lloyd kicked 30 yards to Gallagher. Young could not circle left end for advance, while Sweetland's line buck netted but 1 yard. However V. P. I. was offside, a penalty following. Gallagher's end run was a failure, but Sweetland annexed 5 and Young 4. Playing safe, Young kicked 51 yards to Peake. Vaughn Lloyd came right back with a 40 yard spiral to Gallagher, who returned 8 yards. Gregory went in for Taylor. Miles was roughed in trying for a forward pass and V. P. I. penalized 15 yards. A squabble ensued as to the referee's decision and it was determined that he was wrong. Washington and Lee lost 8 yards on the deal. Donahue drew back to try a forward pass, but

Caffey penetrated the line and knocked it from his hands. It was recovered by Caffey on Tech's 60 yard line. Oppenheimer broke through the line for 10 yards, but Funkhouser could not. Caffey went 11 yards between right end and tackle. Benedict hurdled and gained 5 yards, but was penalized 5 yards.

Shultz tackled Peake from behind. Rives went in for Gregory. Rives tried for a field goal with a drop kick from the 33 yard line, but the ball did not carry far enough, falling short. Gallagher made a daring 28 yard return of the drop kick. Young kicked 52 yards to Peake, whom Seeley tackled hard. Gallagher received Vaughn Lloyd's 35 yard kick. Tyree relieved Vaughn Lloyd, while Beuhring went in for Sweetland. Gallagher failed to gain around end. Shultz advanced 19 yards on a forward pass from Young. Gallagher and Young failed on runs, while two incomplete forward passes endowed V. P. I. with the ball. Saunders ripped the line for 17 yards. W. and L. was offside on the first down, a 5 yard penalty following. Saunders gained a yard. Caffey plunged 8, but Shultz threw Peake for 5 yards. Miles intercepted a forward pass and sped toward the goal. For a while it seemed as though he would outdistance Moore, the only pursuer. But within 3 yards of the goal line, after he had run 65 yards, Miles was hurled to the sod. While the race was in progress the whistle blew.

W. and L.	Position	V. P. I.
Simms	L. E.	Taylor
Schultz	L. T.	Williams
Bryan	L. G.	Moore
Pierotti	C.	Montague
Scarry	R. G.	Cottrell
Miles	R. T.	Benedict
Harrison	R. E.	Vaughn
Gallagher	Q. B.	Peake
Young	L. H. B.	Huddle
Sweetland	R. H. B.	Macon
Beuhring	F. B.	Saunders

Touchdowns—Saunders, Gallagher. Goals from touchdowns—Young. Substitutions—W. and L.: Barrow for Pierotti; Milner for Beuhring; Dingwall for Bryan; Donahue for Gallagher; Seeley for Simms, Beuhring for Sweetland. V. P. I.: Rives for Taylor; Funkhouser for Saunders; Engleby for Peake; Gregory for Rives; Dixon for Macon; Taylor for Gregory; Somerville for Williams; Moore for Cottrell; Henderson for Montague; Peake for Engleby; Gregory for Taylor; Rives for Gregory; Saunders for Oppenheimer. Referee—Mr. Gass of Lehigh. Umpire—Mr. Poague, V. M. I. Head linesman—Mr. Morrison of Cornell. Time of periods—fifteen minutes each.

P. D. Converse, instructor in economics and commerce, has returned to his home at Morristown, Tenn., to be at the death bed of his father. He received the news of his father's condition while in Roanoke attending the game.

Schedule for 1914 Campaign

- Sept. 26—Marshall College 0; W. & L. 34
- Oct. 3—Morris Harvey College, 0; W. & L., 103
- Oct. 10—Roanoke College, 0; W. & L., 59
- Oct. 17—Georgetown University, 0; W. & L., 13
- Oct. 24—Wake Forest College, 0; W. & L., 72
- Oct. 31—Virginia Polytechnic Institute, 6; W. & L., 7.

- Nov. 7—Swathmore University in Lynchburg
- Nov. 14—University of West Virginia in Charleston
- Thanksgiving—North Carolina A. & M. at Norfolk

For the Kind of

Clothes

You Have Always Wanted

GO TO

LYONS TAILORING CO.

TAILORS FOR COLLEGE MEN

BROWN'S PRESSING SHOP

THE ONLY STEAM SHOP IN TOWN

French and Dry Cleaning for Clothes, White Kid Gloves Hats and Shoes

SATISFACTION GUARANTEED

Phone us Your Needs, No. 194

REMEMBER THIS BOYS!

The College Men's Pressing Club

STILL DOES UP-TO-DATE WORK

ALL WORK GUARANTEED

Call Phone 258 or send to 35 Nelson Street

HOTEL CARROLL

A Modern American Plan Hotel

LYNCHBURG, VA.

Virginia Laundry Co.

LYNCHBURG, VA.

Satisfaction Guaranteed. Wash called for and delivered

E. E. PETTIGREW, Lexington Agent. Phone 21. At First National Bank Building

For Prompt Service Call

Miley's Livery

Street Surreys

AND

Transfer Wagons

Stylish Rigs Reasonable

Telephone No. 204
Jefferson Street Lexington, Va.

John W. Miley, Prop.

What Students Need

IN THE

FURNITURE LINE

CAN BE FOUND AT

VARNER, POLE & CO.

The Main Street Furniture People

McCown's Photograph Gallery

OPPOSITE COURT HOUSE

Nothing but the best work done. Will save you money and give you satisfaction. Bring me your amateur work. Quickly done on the best paper.

Gillock's Grocery

The Place for Good Eats.

Peanuts

A SPECIALTY

Next to the Lyric

University Dining Hall

The PLACE TO EAT

Meal Hours: 8 to 9.30; 2 to 3; 6.30 to 7.30

Banquets a Specialty.

E. A. DONAHUE, Man'gr.

WHEN IN STAUNTON, VA.,

Washington and Lee Students visit the

Busy Bee Restaurant

rything in sea en day and n ght

The Ring-tum Phi

(ESTABLISHED 1897)

Washington and Lee University Weekly

PUBLISHED EVERY TUESDAY

Subscriptions \$1.50 per year, in advance.
Single copy 5 cents.

OFFICE—THIRD FLOOR, MAIN BUILDING

Entered at the Lexington, Va., post-office as second class mail matter.

EDITORIAL BOARD

REUBEN A. LEWIS, JR., Editor-in-Chief
N. C. EVANS, Assistant Editors in-Chief
R. M. CURTIS, Assistant Editors in-Chief
W. M. BROWN, News Editor
E. S. SANDFORD, Associate Editors
B. F. WOODRUFF, Assignment Editor

MANAGEMENT

MORGAN KEATON, Business Manager
A. H. BOYD, Asst. Bns. Managers
W. G. LESTER, Asst. Bns. Managers
STANLEY WILLIAMS, Asst. Bns. Managers

All matter of business should be addressed to the Business Manager, and all other matters should come to the Editor-in-Chief.

We are always glad to publish any communication that may be handed to us. We desire to call attention to the fact that unsigned correspondence will not be published.

Rockbridge County News Print

It Merits Encouragement

The Glee club has inaugurated its plans for this season. Those in charge of the vocalists report that prospects are much more promising than in the past two years. By constant practice and determination, the leaders hope to evolve a glee club that will be representative of Washington and Lee.

For some time, such an organization has been lacking and it is needless to say that the loss has been felt. No University could have a better means of promoting publicity than a glee club, if it were properly trained and organized. In past years, it has been somewhat difficult to impress prospects that they do not have to be fully trained to secure positions.

With proper support at the hands of the student body and a due amount of interest and enthusiasm on the part of the candidates, Washington and Lee will develop such an organization. By just such means, the University now boasts of a band that is a splendid student venture. Let us have a glee club that we will cherish as much.

Such Spirit Deserves Victory

Captain "Jiggs" Donahue displayed spirit in Roanoke Saturday that has seldom been equalled. And such a display of grit and nerve should always deserve victory, not only in football and in every line of endeavor. The plucky little leader hobbled to the game on crutches. When the Generals were wabbling against V. P. I. in the throes of a well developed case of over confidence, Donahue discarded his crutches, donned his gridiron togs and braved the perils of vicious tackles that might have produced permanent injury that Washington and Lee might eke out a triumph.

From time to time, Donahue has

made sacrifices that has endeared himself to Washington and Lee. But this feat will stand before those that follow him to serve as an example of the true Washington and Lee spirit. While it is true that he was in a position to lend little more than moral support, Donahue offered all he had that the Generals might win.

Generals Face Hard Games

Handicapped by injuries, the Generals have a difficult schedule during the remainder of the gridiron season. Swarthmore will be encountered in Lynchburg Saturday with a powerful eleven, a machine that should be difficult to overcome. Then West Virginia will be met in Charleston. West Virginia has a more formidable team than in 1913, and will offer more stubborn resistance. Then the final struggle of the season with North Carolina A. and M. is staged in Norfolk on Thanksgiving.

A special train will be operated to Lynchburg. The band will journey along to furnish harmony. While it is needless to state that little opposition in rooting will be encountered, every man will be needed to urge the Generals on to their greatest effort. Washington and Lee will be on parade before the fair students of Randolph Macon and Sweet-Briar. It behooves us to state that it will be a gala occasion. "On to Lynchburg."

RESOLUTIONS OF SYMPATHY

Resolved, That since God in His infinite wisdom, has seen fit to take from this world the Rev. James B. Converse, we the representatives of the Commerce II class extend to Paul Dulaney Converse and family this resolution of sympathy and respect. May the same impulse that guided the deceased be a noble inspiration to those surviving.

Resolved, That a copy of this resolution be sent to the family, to the papers of Morristown Tenn., and published in the Ring-tum Phi.
MORGAN KEATON.
J. L. HARRISON.
S. WILLIAMS.
C. K. WEINBERGER.

MID-TERM REPORTS SOON

Mid term reports will be mailed to the parents of the Washington and Lee students within the next week or ten days. Some of the more conscientious professors turned in their grades to the registrar on Oct. 3rd, as by schedule. These grades have no part in determining whether a student passes for the term, but are merely sent out for the purpose of indicating how a student is progressing in his studies, that he may remedy any failing or keep up his present standards.

President Henry Louis Smith has been away from his office for the last ten days. When he departed it was announced that he had gone to East Liverpool, O. ostensibly for a speaking tour of the state. He was expected to return yesterday but did not fulfill expectations. It is known that Dr. Smith felt that he needed a rest following his strenuous activity entailed in opening the University session and it is believed that he took this opportunity to become invigorated.

CROSS COUNTRY RUN TO BE SOON

Authorities Will Set Date Before Thanksgiving—Generals Confident

The cross country run of the South Atlantic Intercollegiate Athletic association will be held in Lexington on Nov. 14th, or Nov. 21st. A vote of the different teams expecting to enter has been taken, but the result of it will not be known until tomorrow. Some of the teams, including the University of Virginia, were not willing to enter an event after Thanksgiving, as was planned, and thus forced a switch in plans.

Coach Fletcher is more than pleased with the progress shown by the candidates in the University for the cross country squad and he expects Washington and Lee to make a very strong showing. Johnson, Moore Hastings, Adams Englebert and others are running the six miles easily.

SUBJECT FOR DEBATE NOT YET DECIDED UPON

Hope to Name Question for Intercollegiate Debates Soon

The question for the intercollegiate debates with the University of Tennessee and Trinity college of North Carolina, has not been decided. Morris Masinter, secretary of the debating council, is corresponding with the authorities at the two universities in an effort to arrive at a definite subject for debate. Washington and Lee, so far, has not proposed any question.

It had been hoped that the subject be decided before Christmas, so that preliminary trials could be held. The deciding trials will be held during the second term.

HOPE TO START ON GYM BEFORE DECEMBER 1

Work on the foundations of the Doremus Memorial gymnasium is proceeding day and night, in an effort to complete the understructure by Dec. 1st. The contractor, M. B. Stoddard of Staunton, hopes to start erecting the brick work on the gymnasium at that time.

As soon as the brick work is completed, the construction of the other features of the building will begin. The gymnasium will be finished entirely before next September, when the next session opens. There is a slight possibility that the final dances will be given in the gymnasium, but no promises have been made.

THANKSGIVING DANCED PLANNED

Continued from page 1

Arrangement—J. M. Faulkner, chairman; Frank Gilliam, A. G. Paxton B. F. Woodruff, G. T. Holbrook.

Tom Kirkpatrick, president of the Cotillion club, has named the following members on his committees:

Arrangement—P. P. Gibson chairman; J. R. Neal, Reuben A. Lewis and Junius Peake.

Reception—E. P. Davis, chairman; E. B. Shultz, E. A. Donahue and W. H. Smith.

Invitation—E. S. Moore, chairman; H. K. Young, W. A. Wright and C. L. Christian.

As usual the dances will be given in the gymnasium.

FEW CONVENTIONS WILL BE HELD DURING XMAS

Many Fraternities Will Hold Session in California in 1915

There will be few national conventions of the fraternities during the approaching holidays. As a usual event, there are a number of conventions during the Yuletide holidays, but this year will prove an exception. There will be two big congresses, however in the South. The Phi Delta Theta fraternity will hold a national convention at the Tutwiler hotel in Birmingham during the holidays. The Washington and Lee chapter of this organization has elected Claiborne Watts Gooch to represent it at the convention, while several other members are expected to attend.

The Alpha Tau Omega fraternity will hold its biennial national congress at Nashville at the Hermitage hotel. The Virginia Beta chapter has elected P. C. Buford, Jr., as delegate, with Reuben A. Lewis as alternate. Five others will also attend the convention.

Most of the fraternities have scheduled conventions during the summer of 1915 in San Francisco, where the delegates may be given an opportunity to attend the Panama-Pacific exposition. However a number of frats will have sectional conclaves during the present winter. Sigma Phi Epsilon has a conclave in Richmond. Kappa Sigma, Sigma Alpha Epsilon, Kappa Alpha, Delta Tau Delta and others are to have province conclaves.

DEATH OF REV. CONVERSE FELT

Paul D. Converse, instructor in commerce and economics was called away suddenly from the game in Roanoke to the deathbed of his father at his home in Morristown, Tenn. When he reached Roanoke to witness the V. P. I.-W. and L. battle, a telegram awaited him announcing that his father was dying. He departed for home to accompany the remains of his father to Bluntsville, where they were interred.

The student body expresses its heartfelt sympathy for Mr. Converse in his great loss. The Executive committee has drawn up the following resolutions:

Lexington Va. Nov. 3, 1914.

Whereas, It has pleased our Heavenly Father in his infinite wisdom to remove from this earth the Reverend James B. Converse; and

Whereas, this act of the Almighty deprives our beloved and honored instructor Paul D. Converse, of a kind and loving father, therefore be it

Resolved, That we, the Student Body Executive committee of Washington and Lee University extend our sincere and heartfelt sympathy to our instructor and comrade in this sad hour of bereavement; be it further

Resolved, That a copy of these resolutions be entered in the minutes of this committee, and copies sent to the sorrowing family and to the Ring-tum Phi.

(Signed)

P. P. GIBSON.
E. S. McCORD.
L. T. WHITE.

The New York Artists Concert company will give a concert at the Library tonight, beginning at 8:15. Miss Laura Combs, who has a beautiful soprano voice, will take the leading role. A quartette, consisting of Miss Combs, Miss Flora Hardie, Frank Ormsby and Frederick Martin, will render several selections, while Miss Edith Evans will be their accompanist.

The Ring-tum Phi

Tuesday, Nov. 3, 1914

Social and Personal

Miss Susan Bell was in Lexington Monday for a short visit.

B. P. Pettus was a visitor at the Sigma Phi Epsilon house, returning with the team from Roanoke.

Mrs. E. J. Lanigan remains quite ill at Mrs. Mead's residence on Letcher avenue.

M. P. Burks returned from Richmond Saturday, where he had been at a meeting of the code revisors.

Miss Virginia Moore has returned from a visit to Mary Baldwin seminary in Staunton.

O. B. Barker of Lynchburg, with his sister, was a guest at the Sigma Chi house on Sunday.

Miss Nancy Carrington, who is spending the winter in Lynchburg, visited her home here on last Sunday.

Mrs. H. P. Carrington has returned from a visit to relatives and friends in the southern part of the state.

Miss Nancy Pendleton will leave shortly for Danville, Charlottesville and other points, where she will visit friends.

Quite a number of people from the environs of Lexington journeyed to hear the Revercombe-Flood debate at the court house.

Mr. and Mrs. S. O. Loughlin of Wheeling, W. Va., visited their sons Phil and Sam Loughlin this week, returning with the team from Roanoke.

Miss Katherine Rout of Randolph Macon, and Miss Frances McLeod of Mary Baldwin, have returned to their respective schools after a short visit to Mrs. William McElwee.

Paul Thomas went to his home in Bluefield, W. Va., Monday to cast his first vote. His father was candidate for state senator from his home district.

Miss Agnes Patton has returned from a visit of several weeks to New York. She spent the greater part of her time there in attending dancing classes, given by the best professionals in the city.

INJURIES KEEP GENERALS WEAK

Donahue Will Be Out—Young, Miles and Others Injured

Washington and Lee will enter the Swarthmore engagement badly handicapped with injuries. Captain "Jiggs" Donahue will hardly be in condition to oppose the Pennsylvanians, although if it should come to a pinch he might appear at quarter back. Left halfback "Cy" Young is troubled with innumerable injuries, while Sweetland has never recovered from his bad shoulder. Beuhring's knee is still a source of anxiety.

On the line, Shultz, Barrow, Pierotti, Bryan and Harrison are the only members without injuries. Ira Simms may appear against Swarthmore, but it is hardly probable that he will play the full game. Seeley has an injured back, while Miles is suffering from bad legs and other lesser pains.

With the members of the back field in such poor condition Coaches Elcock and Rafferty hardly expect to husband their strongest array against the Garnet eleven. Milner has shown to advantage in the backfield and may appear at some regular position. With a week to get into better condition, the Generals should not be easily manhandled.

The game may have a distinct bearing on the South Atlantic title. At the present time Virginia and Washington and Lee are two of the most formidable rivals. As the two teams do not clash with each other, there will be no way to gain a direct comparison. However, Virginia plays Swarthmore later on in the season. Should the Generals make a stronger showing against Swarthmore than the University of Virginia, and defeat North Carolina A. and M., they will doubtless gain the title to the South Atlantic division.

Of Course You Wear SHOES

NETTLETON'S Shoes for Men are "It" from the kick-off; Shoes that have style, fit, and will stand all the mass plays and scrimmages. We admit it: We want to sell you a pair of Nettleton's.

VARSIITY MEN WILL FIND THE RIGHT SORT OF HATS, SHOES AND SPORTING GOODS AT GRAHAM'S, The Shoe Man

Agents for A. G. Spalding & Bros. No. 12 Main Street

WAYLAND & GOODALL

(Successors to Coleman's Drug Store)

PHONE 94

THE PLACE TO GO FOR

Prescriptions Toilett Articles
Candies { Norris Sodawater
Tobacco, Cigarettes and Cigars
A full line of High Class Pipes.
W. & L. Stationery

Morris House

MODERN IN EVERY RESPECT

IDEAL PLACE FOR STUDENTS

Special Attention Given Transient Trade

GO TO

THE DUTCH INN

For Hot Waffles and Club Sandwiches

Rooms for Visiting Girls and Chaperones

BANQUETS OUR SPECIALTY

We Have the Place & We Have the Tables.

Come in and Make Yourself at Home.

Lexington Pool Company

Go to IRWIN & CO., Inc.

FOR

Curtains, Portieres, Table Covers, Rugs, Sheets, Pillow Cases, Blankets, Comforts and everything in Dry Goods and Notions.

Also for the BEST OF EVERYTHING TO EAT.

NEXT TO McCRUM'S

We are young but that makes us all the more anxious to please. Boys call on us for anything in the

Gent's Furnishing Line

B. C. TOLLEY & CO.

LYRIC

Two Shows Nightly



Wright & Ditson

Manufacturers and Dealers in

High Grade Athletic Supplies

Official Implements for all Track and Field Sports
FOOTBALL BASKETBALL Uniforms
ICE SKATES for all Athletic Sports
HOCKEY
GOLF
GYMNASIUM APPARATUS

Wright & Ditson SWEATERS are easily the finest. Choicest Worsted, well made, perfect fitting.

Catalogue Free

WRIGHT & DITSON

344 Washington St., Boston
Harvard Square, Cambridge
22 Warren St., New York
82 Weybosset St., Providence
16 So. La Salle St., Chicago
591 Warren St., Worcester
359 Market St., San Francisco

Fresh Candies :: Cold Drinks

Pure Ice Cream

Best served; and a welcome awaits you at

SHIREY & BROWN'S DRUG STORE
BUENA VISTA, VA.

BOLEY'S Book Store

Successor to W. C. Stuart.

DR. MILLS NEXT ASSEMBLY SPEAKER

It has been recently announced that next Tuesday morning Dr. John N. Mills of New York, will address the students in the chapel. Mr. Mills' subject will be "China, From the Viewpoint of a Tourist." While perhaps not so well known throughout the South, Dr. Mills has an enviable reputation in the North as a delightful and entertaining speaker. He is a man of wide experience gained chiefly through traveling and he is particularly adapted to the task of delivering an address upon China, having spent some time in that celestial country. Dr. Mills' address will be missionary in character and he will endeavor to present the needs of China as he saw them from a tourist's viewpoint.

The announcement that Dr. Mills has been secured to address the students of Washington and Lee is consistent with the avowed intention of the local association to secure for the fall term speakers of national reputation. Among those that have spoken already are Mercer, Harte, Farmer and Hall. Dr. Mills is known as a man who is well fitted to take a position among these mentioned.

FEW STUDENTS SAW V. P. I. GAME

Confident of Easy Victory Many Stayed at Home--Less Alumni Present Also

Confident that the Generals would defeat V. P. I. by an overwhelming majority the student body did not accompany them in as large numbers as last year. Nor were they reinforced as well by the alumni as in the past.

Coach Fletcher, however, deserves the most praise in his desire to see the game. When unable to get the special to stop at Buena Vista, he chartered a freight train and rode to Loch Laird, where he boarded the train at the junction of the Chesapeake & Ohio and Norfolk & Western.

The team was met in Roanoke by a band. The student body marched behind it in a long line to the Generals' headquarters, the Ponce de Leon Hotel, where they voiced their support in a few cheers. After which they took possession of the city, but in a remarkably quiet manner.

That night was the occasion for an informal dance tendered by the alumni in honor of the team.

Among the large number of alumni present were: "Red" Hunter, Peter Saunders, "Hank" Rogers, "Fats" Miller, R. L. Bragg, Dan Owen, B. P. Pettus, Isaac Shuman, W. S. Phlegar, K. C. Whittle, Martin Williams, Jr., W. C. Hall, M. S. Smith, J. E. Yonge, C. E. Burks, Tucker Harrison, Jack Newton, W. S. Brown, Owen Nelson, J. T. Graham, Bob Hutcheson, Harry Miller, B. R. Lemon, Zach Johnston, Sydnor Kirkpatrick, J. L. Campbell, Red Burnette, Thurman Clark, Gaston Caperton, R. E. Craft, R. B. Adams, Jr., Brooke Harmon, Pat. Dillard, Charley Crush, "Goowley" Walker, Prince Parham, C. S. McNulty, I. P. Graham, Bill McGuire, Horace Mayhew, John Izard, H. J. Phlegar, Roger Winborne, Bob Winborne, S. O. Laughlin, W. B. Fowlkes, J. R. Caskie, Lucian H. Cocke, L. J. Boxley, N. D. Smithson, O. C. Jackson, E. L. Graham, W. A. Adair, A. P. Staples, W. S. Hood, J. H. Hanna, J. S. Shertez, Bob Walker, J. D. Ankrom, J. M. Barker, Jr., Gaston Chaves, J. M. Cole, Tom Darnell, H. B. Gregory, Ben Hooper, J. C. Moomaw, R. A. Mosby, E. E. Bain, Vic Friend.

A large number of visitors from Lexington were also present: Dr. L. W. Smith, Dr. Granville Campbell, Coach Forrest Fletcher, Mr. M. W. Paxton, Mr. A. L. Graham, Mr. J. Ed. Deaver, Mr. Miley, Miss Fannie Graham and Mr. Strain; Mr. and Mrs. S. O. Laughlin of Wheeling, W. Va., Mr. and Mrs. Cash of Eagle Rock, Va., and many other friends and patrons of the University witnessed the contest.

SOPHOMORES WILL PAY

The Sophomore class, in a special meeting called by President Rives, sanctioned the plan of the executive officers that the first funds collected under the new budget should be devoted to paying the sixteen dollar debt of the class for the new push ball bought last year. The finance committee reporting that the collection of the apportionments was proceeding without difficulty, the meeting then adjourned.

S. L. Robertson is confined to his room with a slight attack of pneumonia.

MARLEY



an **ARROW COLLAR**
CLUETT PEABODY & CO. TROY, N.Y.



Spalding's

For over thirty-five years—have been the ones to think out and put on the market, things really new in sport.

Are you posted on Just what's new this year?

Send for our catalogue. Hundreds of illustrations of what to use and wear—For Competition—For Recreation—For Health—Indoor and Outdoor.

A. G. SPALDING & BROS
110 E. Baltimore, St., Baltimore, Md.

Washington & Lee University

DEPARTMENTS

Academic
Engineering
Law

HENRY LOUIS SMITH
President

R. H. FOX

Students' Barber.

THE COUNTY NEWS
Job Office

Opposite Presbyterian Lecture Room
Orders Promptly Filled

Get It at

HEINS'

ROANOKE, VA.

The Miller Transfer Co.

JOHN C. HUTTON, Manager
MAIN OFFICE
AT LEXINGTON HOTEL
Phone 62

JAMES JACKSON

Barber and Hair Dresser

Experience has made him skillful. He especially solicits the patronage of students, cadets and citizens.
He was General Lee's Barber. Nelson street

M. MILEY & SON

Carbon Studio

University Supply Store

Incorporated

Text Books
Stationery
Candies
Athletic Goods
Cigars and Tobacco
Toilet Articles
Late Breakfasts

Net Profits revert to Athletic Association.
Rebate Plan will be put in operation Jan. 1.

STUDENTS

Patronize a Student

See samples in Newcomb Hall. American Standard Line of Tailoring

Give me a trial. CLYDE KICKLIGHTER

Castle Hill An Ideal Home for Students

Banquets Served Reasonably

Jas. Lewis Howe President
Wm. M. McElwee Cashier

The

Peoples National Bank

Lexington, Va.

ORGANIZED APRIL 1, 1904

Capital Stock - - \$50,000
Surplus Fund - - 25,000

FOR FIRST GLASS WORK GO TO

F. A. GRIGSBY'S
Shoe Shine Parlor

HEADQUARTERS
FOR STUDENTS.

On Main Street next Door to
Telegraph Office.

Sunday Hours: 8-10.30 A. M.

The Model Barber Shop

Next Door Bank of Rockdrige
Students'
Headquarters
HUGH WILLIAMS, Prop.

BROWN-MORRISON CO.
INCORPORATED
PRINTERS, BINDERS, ENGRAVERS
"SERVICE AND QUALITY"
CAPITAL \$100,000
DIRECTORS: A. P. CRADDOCK, J. STENART WALKER, J. A. WILKINS, J. H. MORRISON, MARTIN L. BROWN
MARTIN L. BROWN, PRESIDENT
JNO. J. MORRISON, SECY. & TREAS.
LYNCHBURG, VA.

WE HAVE EVERYTHING THE STUDENTS LIKE

IN THE WAY OF

Cigars, Cigarettes

Fresh Candies, Fruits
All kinds of Canned Meats
Crackers, Cakes, etc.

Come in to see us

Welsh & Lindsay

H. O. DOLD

THE STUDENTS' FRIEND

Requests the pleasure of a personal interview at his place,
CORNER MAIN AND WASHINGTON STREETS,

with each W. & L. Student—old or new. You will find the most complete assortment of Good Things to Eat, Smoke and Chew.

Nothing old except the proprietor; Everything fresh except the clerks.

W. HARRY AGNOR

The Up-Town Store

Towels, Bed Coverings, Washstand Supplies, Tobaccos, Cigars, Fruits and Confections. Give us a call.

95 MAIN STREET

Mary Baldwin Seminary

FOR YOUNG LADIES (STAUNTON, VA)

Term begins Sept. 11, 1913. Located in the Shenandoah Valley of Virginia. Unsurpassed climate, beautiful grounds and modern appointments. Students past session from 33 states. Pupils enter any time. Send for catalogue.

MISS E. C. WEIMER, Principal

WE SPECIALIZE IN

College Annuals, Magazines and Stationery.

Sample and Prices upon request.

DULANEY-BOATWRIGHT CO., Inc.
Lynchburg, Va.

COLORED HAT GOATS PERFORM NEW STUNTS

The green and red hats of the two ribbon societies made their initial appearance on the campus last week, and the "goating" period is now well on its vociferous way. Sundry performances, affording considerable entertainment to the public and nendish glee to the "goaters," followed quickly upon their heels. Questions, hitherto answered by once independent wearers of the green and red with nonchalance and reserve, are now replied to with the deepest concern and anxiety. Dignity and pride have been scrupulously abandoned until after the momentous day of initiation, when such compelling mandatory calls as "Carmelite" and "Service" shall be things of the painful past.

The methods of the two societies are somewhat different from those used last year, though not materially so. P. A. N. goats find that it is their reluctant but inexorable duty to execute a species of the trot when on the campus between recitation hours of 9 a. m. and 2 p. m. This antic is an addition to last year's program. The time of day and the name and place of residence are quoted in the same way that such information was given before by wearers of the red.

The Friars have adopted several new features. The well known and oft repeated "Cuckoo" of last year's flock has been discarded and a newer and more acceptable incantation has supplanted it. Another entirely new art is that which must be executed daily with the 12 o'clock bell. This is a form of benediction and exhortation for mercy delivered with sufficient lung effort to make it clearly audible to any old Friar who may be in the immediate vicinity. Passing in and out of the University grounds is accompanied with another fitting ceremony; whose significance will be revealed at the proper time to the prospective initiates. "Carmelite!" pronounced with a note of both summons and warning, calls all goats within hearing to the speaker, who then instructs the trembling unfortunate what agony or torture he must undergo.

The annual show and initiation will take place some time in December.

CLASS TEAMS SCHEDULE GAMES WITH PREP. TEAMS

Plans for the Freshman and Sophomore class football teams are beginning to assume definite shape. E. M. Bell, manager of the Freshman team, has already scheduled a game with Greenbrier Presbyterian school, to be played in Lewisburg, W. Va., and there is no doubt that at least one more game will be scheduled in the near future. Those trying for the Freshman team are Tiliar, Sutton, Taylor, Marshall, Covington, Stephenson, Gilbreat, L., McKinnon, Menefee, G. S. Taylor, McChord, Kimball, Woodson, Kirkpatrick, George Revercombe, Marks, Anderson, Platt, Camp, Sorralls, Twyman and Chapman Revercombe.

The Sophomores held their first practice yesterday afternoon. Manager T. C. Waters has scheduled a game with Augusta Military Academy, to be played Wednesday, Nov. 3rd, at Fort Defiance, Va., and arrangements have been practically completed for a game in Staunton with Staunton Military Academy.

FOR RENT: One large room with heat, light and bath. Apply to No. 22 White street. Suitable for two.

We're Catering to You.

We think we know just exactly what will appeal to your taste in

Clothes and Hats and
Haberdashery,

and we are making a special feature of young men's smart apparel.

Your orders by mail will receive our careful attention.

Perkins

Formerly the Calvert Shop F at Fourteenth Washington, D. C.

S.F. Lackey & Co.

Successor to

Washington Street Bakery

*Hot Peanuts
all the time.*

Next to Adams Express Co's Office

Busy Bee RESTAURANT

A hearty welcome
awaits you at our
place when in

Roanoke, Va.

"MOST COMPLETE HOTEL"

Hotel Virginia

ALEXANDER T. MOORE
Proprietor

Staunton, Va.

In Beautiful Shenandoah Valley

THE HUB
Gents' Furnishings
Novelties in Hats and Caps

Corner Main and New Streets
STAUNTON, VA.

Lexington Restaurant

For Ladies and Gentlemen

Open All Night

OUR SERVICE IS COMPLETE.

CUNNINGHAM & SON

Transfer and Livery

Buena Vista, Va.

STORRS-SCHAEFER CO.

CINCINNATI

Specialists in

Men's Tailor-made Garments

Graham & Campbell

Local Agents

This Space Reserved

—FOR—

The Underwood Typewriter Co.

THIS SPACE RESERVED FOR

HOOVER & SMITH

Fraternity Jewelers

PHILADELPHIA

New Palace Hotel

The Home of W. & L. and V. M. I. Boys

ALL WELCOME

W. E. GARDNER, Prop., Buena Vista, Va.

OLYMPIA CAFE

STUDENTS

When in Roanoke visit our place—the most up-to-date place in the city for Ladies and Gentlemen.

110 W. Campbell Ave. ROANOKE, VA.

WHEN IN ROANOKE

—GO TO—

THE SENATE CAFE

FIRST CLASS

A. H. FETTING

MANUFACTURER OF

Greek Letter Fraternity Jewelry

213 N. Liberty Street Baltimore, Md.

Factory: 212 LITTLE SHARP STREET

Memorandum package sent to any fraternity member through the Secretary of his Chapter. Special designs and estimates furnished on Class Pins, Rings, Medals, for Athletic Meets, etc

BASKETBALL SCHEDULE IS ALMOST COMPLETED

Manager Fowlkes Hopes to Announce it Soon—Few Regulars Return

The basketball schedule for the approaching season has been practically completed by Manager Fowlkes, but has not yet been approved by the Faculty committee on athletics. Georgetown announced its schedule Sunday, and this included a game with Washington and Lee in Lynchburg. The University of North Carolina, too, has published the draft for the approaching season and shows that the Generals are to be encountered.

A meeting of the Athletic council is expected soon at which time the baseball and basketball schedule for the approaching seasons will be approved and subsequently published.

Coach Fletcher will have but a small number of veterans to start basketball practice with. Captain Bear, Lile and McCain, three regulars of last season will not return, leaving Center "Back" Miles and Guard "Cy" Young as a nucleus around which to build a team. Seeley, who played in many important struggles, but who failed to get a monogram, will be available as will Shultz. Leonard Zaiss will enter school after Christmas and will be available.

However, it is not felt that there is a dearth of material in college, as several likely players are known to be in the ranks of the student body.

CANDIDATES FOR CONGRESS GIVE A HOT JOINT DEBATE

A large crowd, among which were not a few Washington and Lee students, was present at the courthouse to hear the Flood-Revercombe debate Monday morning. To the students the interest was heightened by the fact that both congressional candidates from this district have close relatives on the University enrollment, Congressman Flood having a brother, J. W. Flood, and Colonel Revercombe two sons, Chapman and George Rivercombe among the students.

Mr. Revercombe, the first speaker, took the floor and attacked the Democratic administration first in regard to its tariff reforms, then in its high treasury expenditures and pension bill. He then turned his attention to his opponent's past record claiming that Mr. Flood was out of harmony with President Wilson's administration, and an opponent of statewide prohibition.

Mr. Flood earnestly denied his opponent's charges, presenting letters from President Woodrow Wilson, and Democratic Congressman Glass of Lynchburg, to show their approval of his work, and their desire for his reelection. He also defended the Democratic administration in its policy, saying that he was fully in sympathy, and cooperating with the President.

Mr. Flood has been in congress for about fourteen years, and comes from Appomattox, Va. Colonel Revercombe comes from Covington. Both candidates are well known.

DR. HALL SPEAKS FORCIBLY

The regular Tuesday night meeting of the Y. M. C. A. was last week addressed by Dr. Winfred Scott Hall of Northwestern University, who spoke at length on "Sex Hygiene." Dr. Hall's address was one of the most instructive that has ever been given in the chapel on this subject. A crowd of nearly 250 men had the pleasure of hearing Dr. Hall.

SWARTHMORE WILL PROVE WORTHY FOE

Continued from page 1

the Garnet eleven has stacked up against some of the most formidable teams in the east and shown to advantage. The opening game with Villanova was lost, 7 to 0, but Swarthmore downed Bucknell, 9 to 0 in the second conflict. Franklin and Marshall triumphed 17 to 0, but Ursinus lost 7 to 0. Last Saturday, the University of Pennsylvania, showing top speed for the first time of the season, overwhelmed Swarthmore, 40 to 6.

Coach Elcock expects a lively tussle from the eastern collegians, especially as Washington and Lee is badly handicapped by injuries. The Pennsylvanian eleven has been overlooked and the style of play noted. In fact, the Generals expect a battle just as hard as that of North Carolina A. and M. from the Swarthmore aggregation.

The battle is attracting widespread attention throughout this section and a large crowd is expected to see the clash at Lynchburg. The Washington and Lee special that will convey the student body to Lynchburg will leave Lexington at 12:15. Classes will be suspended at 12 o'clock. After the game, a dance will be given the players of the two teams and the students at the auditorium by the alumni and the younger set of Lynchburg.

An exceptionally low rate has been gained by Manager Loughlin. The entire trip, including tickets to the grandstand and general admission to the game, will cost but \$2.50. Railroad fare will be but one dollar. The special train will arrive in Lynchburg at 2:30, in ample time to journey to the fair grounds, the scene of battle.

The two teams are expected to lineup as follows:

Swarthmore	Position	W. and L.
Mason	L. E.	Simms
McGovern	L. T.	Shultz
Passmore	L. G.	Bryan
Weidener	C.	Pieratti
Hunter	R. G.	Scarry
Endicott	R. T.	Miles
Donnelly	R. E.	Harrison
Murch	Q.	Gallagher
Locke	L. H. B.	Young
A. Cornog	R. H. B.	Sweetland
Clime, capt.	F. B.	Beuhring.

The officials for the battle have been decided on. Gass of Lehigh, who referred the Georgetown and V. P. I. games, will officiate. Land of Navy, will serve as umpire.

Tom Kirkpatrick, Lynch Christian and H. F. Martin went to Lynchburg on Friday night. They motored over to Roanoke in company with Mrs. Edmunds, Miss Sallie Edmunds, and Miss Elizabeth Anderson of Lynchburg, and witnessed the game on Saturday.

FULL LINE OF COLLEGE JEWELRY

L. G. Jahnke & Co.

J. W. ZIMMERMAN, Successor

Jewelers and Opticians

Diamonds Watches Jewelry
Clocks Cut Glass Silverware

Expert Watchmakers, Engravers,
Diamond Setters, Manufacturing Jewelers.

WORK DONE PROMPTLY

Eyes examined carefully. Glasses fitted accurately. Broken Lenses duplicated exactly.

Manufacturing of
Fraternity Jewelry
a Specialty at
Reasonable Prices

McCRUM'S

Is Headquarters for Athletic News

OUR SODA FOUNTAIN, BESIDES BEING THE DISPENSER OF MOST DELICIOUS DRINKS, IS A SOCIAL CENTER. :: ::

Our stock of Tobacco and Pipes, Candy, Kodak Supplies, Shaving Outfits, Stationery is complete and up to the minute

McCRUM DRUG CO.

Who Is Who?

I FEEL LIKE I AM.

YOUNG MEN

Let me make your Clothes.

Let me sell you Clothes, Shoes, Hats, Caps, Gents' Furnishings, Trunks, and Dress Suit Cases. You will save money.

I don't charge two prices because you are a student. It will do you good to know me and buy from me. Come to see me.

J. ED. DEAVER

Main Street

Opposite Court House

Come to See

Our line of Goods if you want Style, Quality and Price. What we haven't got we can soon get.

—CALL ON—

A. BASSIST

"Your Jeweler"

If you want service. Repairing is our specialty.

The Lexington Hotel

Respectful solicits the patronage of the Student body and their friends.

J. M. QUISENBERRY, Prop.

At GORRELL'S

ON NELSON STREET

You can have your Prescriptions put up by Registered Pharmacists.

Whitman's Candy, Toilet Articles, Conklin's Fountain Pens, Safety Razors, Stationery, Cigars and Tobacco, Fine Soda Water Drinks.

All Things Electrical

Virginia-Western Power Co.

Phone 201

Nelson Street

"The Virginian" Hotel

MODERN IN EVERY RESPECT

Lynchburg, Va.