

# The Ring-tum Phi

"WE'VE BEEN COMING EVERY MONDAY FOR 102 YEARS."

VOLUME 102, No. 25

THIRD RING OF HELL, VIRGINIA 24450

MONDAY, APRIL 1, 1066

## The Phi

April 1,  
1492

**Hill officials:  
"Racism no  
big deal"**  
See the Deans run

**Girl wakes up  
in own puddle  
of vomit**  
See Gilliam 409

**Double-ply  
Trident  
replaces toilet  
paper**  
See Gaines  
bathrooms

**GCF: "The  
Hell with it"**  
See Jerry Falwell  
after school

**Independent  
maintains  
"own identity"**  
See Woods Creek

**Atkins spotted  
living under  
BV bridge**  
See SAEs bring him  
food

**Student has  
friends in  
Athens,  
Chapel Hill**  
See Cool Guy

**Phi Profile:  
Special Forces  
officer Clahk**  
See definition of  
Napoleonic

**New Spring  
term courses  
announced:**

SOC 248 "The Less Fortunate: How to Talk to Your Non-Big Four Friends"  
ANTH 134 "Oakleys on a Rainy Day: A Study of Non-functional Clothing"  
HIST 172 "Indifference at W&L: A Historical Perspective"  
CHEM 104 "Getting the Most for your Ecstasy Dollar"  
ENGN 264 "Why Are You at W&L?"  
JOUR 321 "Ethics, We Don't Need No Steenkin' Ethics"  
See *The Phi*

## Administration bans flip-flops on campus

Controversial footwear decision sparks anti-Howison sentiment in ass-kickin' midnight kegger and bonfire

By Chip Furlow  
STAFF WRITER

In a controversial move, the administration banned flip-flops on campus Friday.

"We felt this was the right move," said Dean of Students David Howison. "I mean really, there's a line and I say we've crossed it."

The move was made in response to the overwhelming prevalence of unkempt Greek members roaming campus.

"I'm in support of a casual classroom for the students," said professor of history J.D. Futch. "But when I have guys coming in wearing a camo hat and flip-flops... I mean, that doesn't even match. Who wears flip-flops to go hunting?"

Students gathered Friday evening to protest the decision. "They tried to pull the same sh\*\* with Croakies last year and we beat that. We just wanted to get out and voice our opinion," said senior Phi Kap Russell Mackin as he filled a cup from the lukewarm keg of Natural Light attendant at the protest. "Plus, there's not really anything going on tonight." The protest

began to grow unruly when the keg ran out shortly after midnight.

"All of a sudden I got this call from Dean Howison's house," said Security officer J.R. "Butch" Reynolds. "When I arrived on the scene, I saw about 50 students beating the sh\*\* out of a Honda Accord and chanting 'Go to Hell Howison.' It was scary. You try telling 50 frat guys to quit beating a car." The Accord, which, it was later determined, belonged to Howison's visiting mother-in-law, suffered more than \$6,000 in damage.

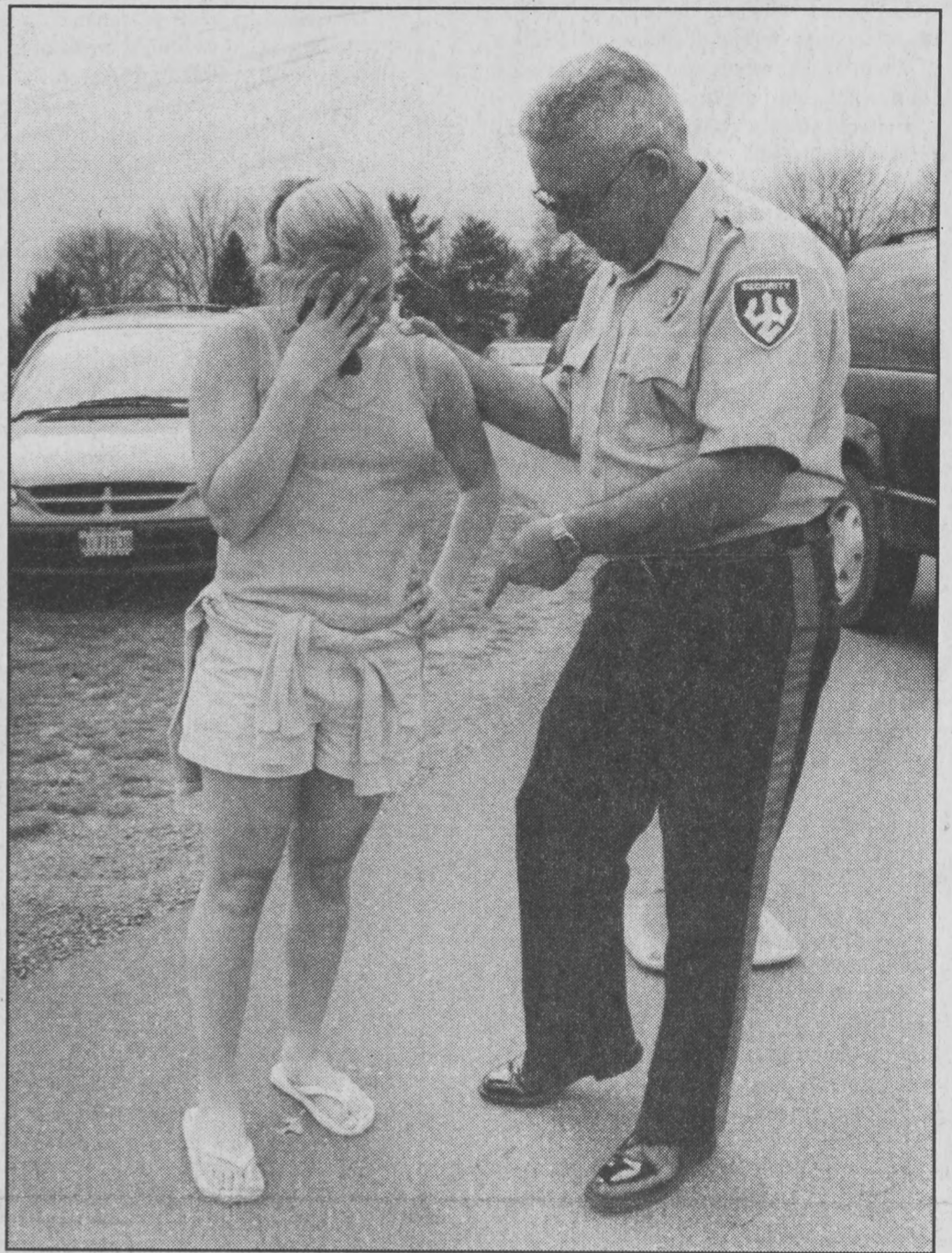
The students ended their riot by burning Howison in effigy. Lexington police, garbed in riot gear and pitching tear gas canisters, finally quelled the disturbance around 2:30 a.m.

Tension had been building since the administration announced two weeks ago that it would sign an exclusive distribution contract with New Balance and Patagonia.

"We're very excited to solidify our relationship with these campus apparel leaders," President John Elrod said. "This should streamline a lot of our student's clothing purchases. Plus, it'll hopefully help nip the whole Abercrombie thing in the bud."



BIRKS A POOR SUBSTITUTE: Students put the beat down on Howison's crappy car.



LAYING DOWN THE LAW LIKE MAMA SAYS: Thomas "Baner" Bane about to open a can o' "whup-ass" on flip-flopping student offender Jessica Morton.

## Prospective "very impressed" by W&L Alcohol use

Tradition, tailgates and Phi Psi's third floor excite girl; strong possibility she'll apply, admissions says

By Ling-Ling  
PHI PANDA BEAR

Prospective student Lisa Woodring was impressed by the strong traditions at Washington and Lee, sources close to her indicate.

After visiting last weekend, "She was just raving about all the tradition they have up there," said her mother, Judy Woodring. "The honor system, the speaking tradition, and all those really

old brick buildings. I guess she's just a very traditional girl."

Besides the honor, friendliness, and neat-o architecture, Lisa found other traditions intact at the school.

"Yeah, she said everybody just gets wasted all day long there," noted Julie Thomas, a member of Woodring's soccer team. "Apparently they have this tailgate thing where everybody dresses up and drinks before football games. It's a real tradition, I guess."

Other Washington and Lee traditions Woodring was able to participate in included wearing her new black pants, puking in the Graham-Lees toilets and pleasuring a junior Econ major in a third floor room of the Phi Kappa Psi fraternity house.

Thus, according to super-secret sources at admissions, W&L and Woodring would seem to be the perfect match. It seems likely that the prospective will choose to attend W&L.

"Yeah, she wants to go somewhere with a lot of brick buildings and ivy, and she didn't get into Dartmouth, so I guess it's W&L," remarked John Woodring, the prospective's brother.

## Alcohol use antiquated?

Java at the GHQ draws huge crowd, while country party at Windfall ignored

By Poison

OPEN UP AND SAY AHHH...

In a stunning turn of events Wednesday night, "Java at the GHQ", a non-alcoholic alternative to the traditional party scene, outdrew the keg party simultaneously taking place at Windfall.

"Yeah, I get pretty tired of drinking with my friends and talking to hot girls," remarked Scott Garrett, a sophomore Phi Delt, "I was just ready for a change, you know?"

Garrett was not alone. The "Java" night drew its highest attendance ever on Wednesday, an occurrence which administrators were at a loss to explain.

"I don't know what the hell's going on," said a confused Dean Howison, as he fought his way through the gaggle of KDs standing in front of the coffee bar. "Is anyone driving out to Windfall later?"

Some called the "Java" attendance record a fluke; others saw it as a seminal event in Washington and Lee history.

Jane Horton, head of Student Health noted, "I really think the culture's changing here. I mean really, how many generations of W&L kids can spend their time standing around in polo shirts and khakis, drinking, before it gets boring? I think coffee is really the new answer to quelling the mind-numbing boredom of living in Lexington as an 18-21 year old."

One reason for the big draw might have been "Java at the GHQ's" Amsterdam Night. The annual theme night featured several Dutch activities like tulip planting, a Van Gogh exhibit and an exhibit on windmill making. But the main draw may have been the "Phatty J" booth featuring large "marijuana cigarettes" and optional "bong hits." Several hookers were on hand as well, representing Amsterdam's famous Red Light District. Overall, patrons were impressed.

"Where else can I try the new K-bud from Nova Scotia on the University's tab," said drooping sophomore David Crawford. "Plus, cheap whores definitely don't hurt. Thank you Virginia ABC Board."

## Students, workers exchange nervous glances

Construction workers becoming part of W&L landscape, cause uneasiness among rich kids

By Holly Wood  
STAFF WRITER

In the latest renewal of the age-old tradition of uneasy co-existence of the social classes, senior Economics major Reynolds Jackson exchanged on Tuesday a curt, nervous glance with Gary Brichford, a brick mason working on the new parking garage for the Haskell Company.

"Yeah, there's always the same guy standing there when I walk by. I guess he's like a guard or something," said Jackson. "I'm never sure whether to say 'hi' or not."

"Yeah, I totally see the same guy every day," said Katherine Bannister, a junior English major. "He's always smoking a cigarette."

Brichford has become a familiar sight to the motorists and pedestrians who pass his post at the Nelson Street entrance to the project site. Jackson and Bannister are not alone in their reaction. Several students have reported feelings of intense guilt and anxiety as a result of their daily walk past the construction site, a phenomenon which is not unfamiliar to Brichford.



"NO COMMENT": Construction workers stubbornly refuse *The Phi's* relentless efforts to discuss student/worker relations.

## Signature Special Forces Officer Randy Dwight Clahk

By I.B. Cuul

REPORTER EXTRAORDINAIRE

The announcement this week that Washington and Lee's new parking deck will not open until the end of the next millennium was greeted with a series of groans from one end of campus to the other.

There was, however, one person who was made "downright giddy" by this announcement.

He is Lexington's own Special Forces Officer Randy Dwight Clahk.

A great deal of Clahk's job description consists of parking enforcement, which he performs extremely diligently, busting dangerous students and residents who look suspiciously like they'll make use of 10-minute parking for 11 minutes, lovingly fastening "boots" to tires, and calling his friends at the towing company more regularly than he takes his fiber.

"Evh since Ah'uz lil, Ah wontid ta tow cahs," Clahk said. "Ah likes it."

The City of Lexington has indeed recognized the growing importance of Clahk's duties, and last year added a "Special Forces" regular-big-people-truck to his existing golf cart, based on and named after Clahk's own favorite Oscar Meyer Weiner Mobile. Clahk has high hopes of expansion for the future.

"Yep. Since that dang garage won't be openin' anytime soon, Ah'm gunna be cashin' in on y'all sorry sunzab\*\*\*\*es," Clahk cackled gleefully, adding that, uh, what he really meant was that he would continue to strive to keep the streets of Lexington safe from hazardously parked SUVs. "And, course, since, well, Ah, uh, be, real busy doin' that, the city can't help but wanna buy me that Humvee Ah be needin' to enforce the law to the best of mah capabilities."

Clahk contends that his wish for a Humvee has absolutely nothing to do with insecurity about his manhood. Absolutely nothin'.

Anyway, should you get done with class one day, and as you approach your car notice a little yellow paper thoughtfully tucked under your windshield wiper, think of that tricky little Officer Clahk, and how he's just saved the streets of Lexington — from you, sucker.

—The Phi thanks Billy Joe Tiddledum for translating assistance during Officer Clahk's interview.

## True faith is found; PAWWNS at W&L

By Major John Thomas

CLOSET PIMP

Have you ever wondered what it's like to be brainwashed by your peers? Do you seek constant validation from others because thinking for yourself is no longer fun? Have you ever wanted to join an elitist group who looks down on others based upon a singular belief? If you answered "yes" to any of these questions, Washington and Lee's newest campus group is perfect for you.

People Always Wanting Wayne Newton's Singing (P.A.W.W.N.S), a self-proclaimed "cult-esque" group has recently brought its unique brand of hypocrisy and hate-mongering to Lexington. Their leader, Peter, explained the group's mission.

"Our whole thing is faith in Wayne Newton and His singing," Peter said. "What we do for our Wayne mission, is come to a location and give out cups and CDs, take people on Wayne retreats, and for all intents and purposes, brainwash individuals into proclaiming their belief in Wayne."

The groups has seen modest success here in Lexington so far, Peter said. They started by unifying already existing campus organizations FOBM (Friends of Barry Manilow), EH4L (Englebert Humberdinck 4 Life) and FOCUS (Fans



SIR WAYNE. The PAWWNS esteemed leader and cult inspriation, Mr. Wayne Newton.

Of Cheesy, Useless Songs), and brought them together under the auspices of PAWWNS. Group member Paul explained the transition.

"I used to be a member of EH4L, but upon talking to the PAWWNS people and rethinking my belief system, I realized that we were all sharing a belief in the same ideas, we were just misguided in our focus," Paul said. "Wayne was, and always has been, the Father, and all other singers are merely His children, so to speak. Burt (Baccarach), Tom Jones, Englebert, they were all made in His image, but Wayne is the Supreme Leader."

The group opens each meeting with a series of performances by the Children of Wayne, who sing songs by, or inspired by, Wayne. The group then studies Wayne lyrics, interviews with Wayne, and discuss how Wayne has saved the human race. One member, Matthew, says Wayne has changed his life.

"I remember the first meeting I came to, someone played 'Danke Schoen' and I knew I was saved from the mistakes my life had been about before," Matthew said. "As Wayne says, 'my little danke schoen, oh, my little danke schoen'."

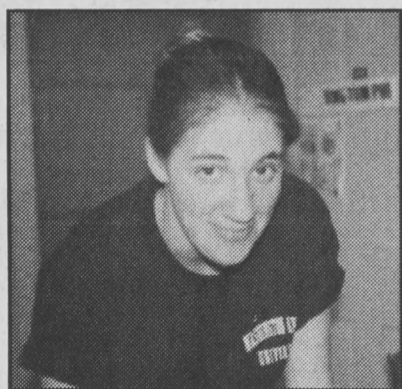
The group invites all members of the Washington and Lee community to come and discover the truth behind life that is Wayne, and to be saved through His words and music. Scheduled brainwashings begin twice weekly at 7 p.m., with pizza and frisbee games to follow. Bring a friend!



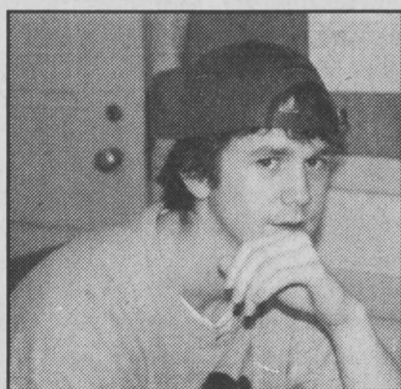
# 24-seven

<b>Tuesday, March 28</b>	
10:30 a.m.	First annual One Man March on Washington Hall. Sponsored by the College Democrat.
6:30 p.m.	Responsibility Symposium. Psych. That crap only comes every 250 years.
7:30 p.m.	Organizational meeting. "W&L will be a single-sex institution again" club. Arlington Women's Center.
<b>Wednesday, March 29</b>	
7:30 p.m.	Organizational meeting. "I lost a J. Crew pea coat at Pi Phi" support group. Room 109, University Center.
8:00 p.m.	Java at the GHQ. Special guest speaker. "How to deal with George W.'s daughter on campus. The do's and don'ts." Bill Clinton, President, United States. W&L men urged to attend.
<b>Thursday, March 30</b>	
12:00 p.m.	Charity Benefit. "Dunk Your Favorite Campus Blabbermouth." Sponsored by The Ring-tum Phi Legal Defense Fund.
8:00 p.m.	Lecture series. Ima E. Gotistic, L.M. Oron, Professors Emeriti of Philosophy at Marvard University. "The Changing Role of Pseudo-Intellectuals in Society." Lee Chapel. Reception to follow in the Boatwright Room.
11:00 p.m.	Lecture Series. "Howard Stern Ought to be President." Sponsored by the College Libertarians.
<b>Friday, March 31</b>	
6:00 a.m.	Volunteer seminar. "If Those Idiots in Administration Can't Get That Damn Parking Deck Built, We'll Just Have to Do It For Them." Sponsored by Habitat For Humanity and The Timber Framers Guild.
4:00 p.m.	Squash (W). W&L vs. Briton College. Liberty Hall Field.
7:30 p.m.	Winter 2000 Porn Filmfest. "Ecstasy" (1981) directed anonymously. French, with subtitles. Room 221, Williams School.
9:00 p.m.	Candlelight Vigil in honor of Idaho Awareness Day. St. Patrick's.
<b>Saturday, April 1</b>	
1:00 p.m.	Concert. Lexington Children's Orchestra. With Xylophone solo by Jeannie Price. Johnson Theater, Lenfest Center.
3:00 p.m.	Ping-pong (W) W&L vs. Gump University. Front Lawn.
4:00 p.m.	Synchronized swimming (M) W&L vs. Pan Zi University. Twombly pool.

## TALKBACK...What would you do for money?



"How much ya got?"  
— Polly Doig '00



"Bea Arthur."  
— Max Smith '01



"Nothing I haven't already done for free."  
— Hollister Hovey '00



"It's all in my name, baby!"  
— Neal Willetts '03



"Only something I'd really enjoy — like clean up puke at The Palms."  
— Emily Barnes '01

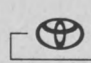
 TOYOTA



TOYOTA-101  
MORE VALUE/LESS MONEY  
INTRODUCING THE ALL NEW  
TOYOTA ECHO

THERE'S AN ECHO OUT THERE! Great looks on the outside, great room on the inside. Cruise the highway at 40 MPG\*...very thrifty. Power? Plenty! It's a 1.5 liter hi-tech 16 valve DOCH engine with variable valve timing (new) that kicks out 108 horsepower any time you want it. And best of all, Echo is the lowest priced Toyota!

New **iFinance Plan** thru Toyota Motor Credit helps those with limited credit history buy or lease a new Echo or Celica. See dealer for details.

 TOYOTA real values. every day. [www.gettoyota.com](http://www.gettoyota.com)

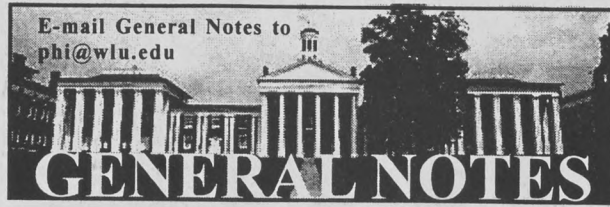
\*EPA estimated 32/39 City/Hwy automatic, 34/41 City/Hwy manual.

Hard-up middle-aged fat chick seeks:

### Sperm Donor ages 13-??

Compensation \$12,000, \$24,000 if hand-delivered. Must have pulse, SATs no higher than 550 (combined), low-fertility rate, dwarf-like stature, pasty-white complexion, albinos preferred. Please describe motivation and send several [ we wallpaper our bathroom with them] photos to:

INeedAMan@sendyourseed.com  
All serious replies answered



**Research conclusive: Ennui is genuine**

In a striking study released Monday, researchers from the NYU Department of Psychology challenged cynical notions about the ennui often found among Washington and Lee students.

"Contrary to what some people believe, and to what we ourselves expected to find, the indifference and apathy of these students is quite genuine," remarked Josh Barker, head of the study.

Some critics of W&L society have in the past insinuated that the boredom so characteristic of many students was "just a front," used to appear "cool" and aloof.

"That's not true," noted Barker. "Perhaps in the past, the attitude commonly referred to as 'ennui' was part of

some deliberate, self-conscious image. But it has now become so ingrained in the culture that it is really just a natural orientation towards life for most students."

The study was conducted by gauging subject response to various stimuli, including pictures of starving children, reports of a death in their family, and tales of injustice from the Civil Rights movement. Subjects were then exposed to more benign stimuli.

"I guess we knew we were dealing with some deep-seated ennui when we got more explosive responses to stuff like 'the parking garage won't really be finished until next fall; there's nothing going on this weekend; the Cop quit selling Swedish Fish,' that sort of stuff."

There was also a more free-form portion of the study, in which students were asked to write essays in response to questions such as "What, ideally, would you do with your life?; When have you been most impassioned in your life?; What is your vision of Utopia?"

Most participants apparently thought themselves in the midst of a history exam.

"I don't even think they read the questions," Barker noted. "I think conducting the survey in Newcomb was a real mistake. Those blue books didn't help either, I guess."

**Independent maintains "own identity"**

Dave Lemon, a junior anthropology major popular around campus for his wit and eclectic sense of style, revealed in a press conference Monday that he declined to go through fraternity rush because he wished to "maintain my own identity, you know? I mean, I don't need forty guys around me who all wear the same clothes, and have the same hairstyle, and wear the same shoes, just to make me feel good about myself," Lemon said, as he fingered the beaded necklace which has become HIS trademark.

The conference was held in response to a question from a friend, who asked Lemon Saturday night as they both enjoyed the sounds of Snack Bar Jones at the Sigma Chi fraternity house.

"Why didn't you pledge?" asked the friend. Lemon immediately rolled his eyes and displayed a large grin.

"Man, that is so typical," he said. He then took his friend by the arm and said, "I'll tell you about it some time."

**Secret "big four" breeding grounds discovered by Rockbridge Sheriff**

Local authorities were shocked Tuesday by the discovery of a secret breeding grounds in a remote section of Rockbridge County. Sheriff R.C. Slowcum led the task force which discovered the grounds after a tip from a local teenager, who stumbled upon the area while looking for a place to take his girl.

The five-acre "ranch," as one observer described it, is apparently intended for the sole purpose of producing young men to feed into W&L's fabled "big four" fraternities. . . [Funny cliches about W&L fraternity members followed but were cut for space.]

**Thetas show dominatrix style**  
**Once again, Kappa Alpha Theta is on top in IM sports events**

By Joc Breef  
STAFF WRITER

In brutal fashion, Kappa Alpha Theta has once again asserted its dominance in women's intramurals competition. Taking first place in all sports except ping-pong, Theta domination was utter and complete.

"We Rock!!!" exclaimed one happy Theta as she bounded through the halls of the Warner Center.

Theta sealed the overall championship following a bloody indoor soccer season, but has continued to field teams into the spring. There are plans to enter a team in the men's IM football tournament next fall.

"Dude, I'm scared," said Roger Bailey, member of the L2 football team, this year's champions. "I heard those girls mess sh\*\* up."

Inside sources attribute the sorority's continued success to a rigorous weight training program and heavy use of mass-building protein shakes.

"Yeah, some of the girls were getting pretty slack in the weight room earlier in the year. We had a few closed meetings, and there were some pretty intense exchanges," said junior Kelly McInnis.

"But I think we came out of it a stronger, tougher group of athletic young women."

In a related note, Coach Jones, head of the IM program, held a press conference Monday to dispel rumors that Theta would be included in the men's, IM division next year.

"There are not now, nor have there ever been, plans to include the Kappa Alpha Theta sorority in the men's intramural league. We as an athletic department staff looked at the problem closely, and we have full confidence in the safety measures now in place to protect the young women competing against these extraordinarily fit ladies."

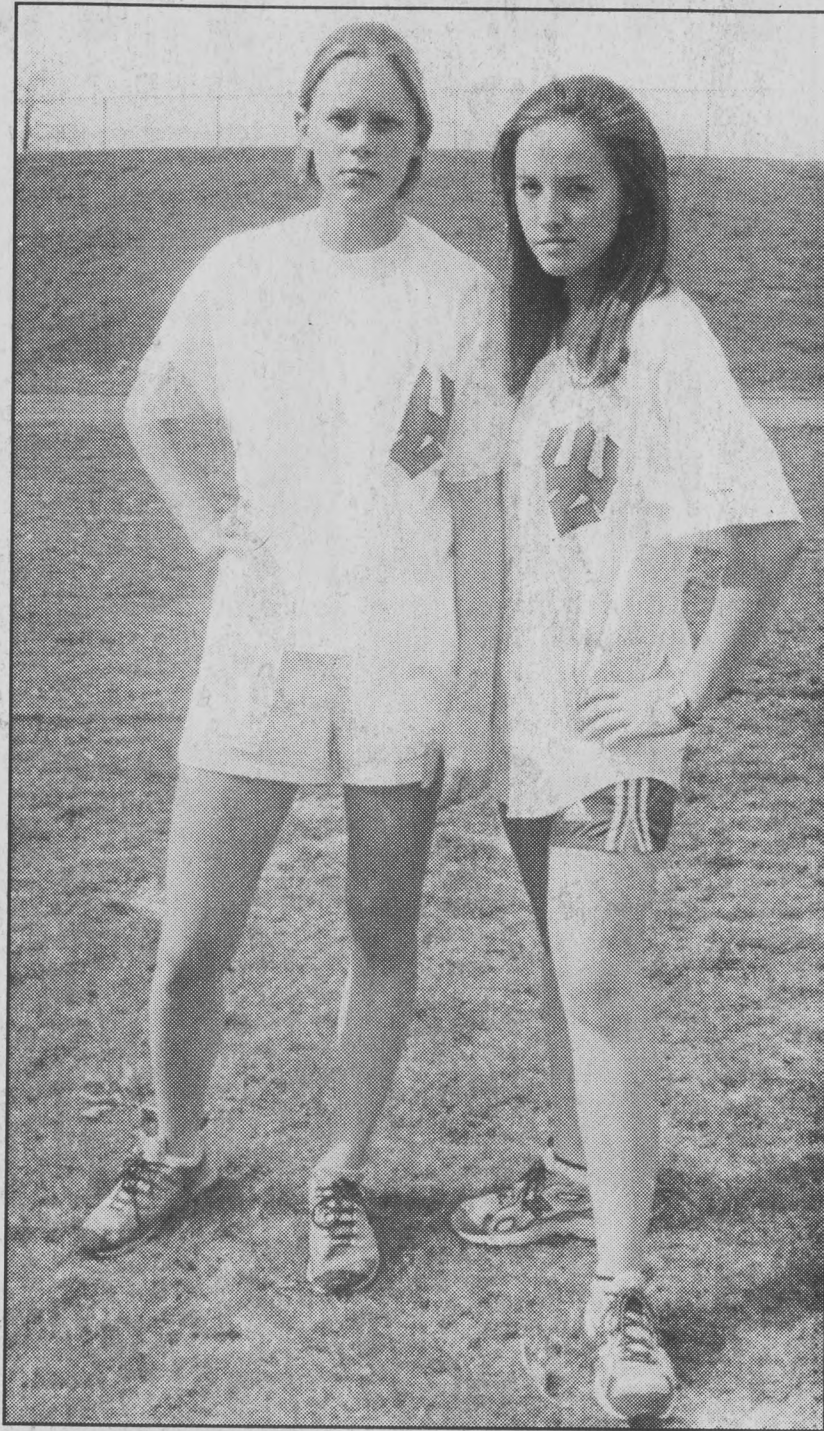


Photo by The Biscuit

YOU DON'T WANT ANY OF THIS! DO YOU WANT SOME OF THIS?! DIDN'T THINK YOU WANTED ANY OF THIS! THIS IS AS CLOSE AS THESE THETAS WOULD LET OUR PHOTOGRAPHER GET TO THEM ON THE SOCCER FIELD. "THIS IS OUR HOUSE," they yelled. "Get out of OUR house!"

**The Ring-tum Phi**

- Executive in Charge of Hazing
- Spirits Editor
- Breaking Fluff Editor
- Otterville Editor
- Upcoming Fluff Editor
- Filler Editor
- Ex-Last Word Editor
- Copy Editor
- Picture Girl
- Assistant Picture Girl
- Executive Editor's Slave

- Polly Doig
- Mike Crittenden
- Max Smith
- Stephanie Bianco
- Elianna Marziani
- Steele Cooper
- Kevin McManemin
- As If
- The Biscuit
- Lisa Lin
- Neal Willetts

The Ring-tum Phi is published under extreme duress during the undergraduate school year at Washington and Lee University, Lexington, VA. Funding for The Ring-tum Phi comes primarily from the sale of crack and other hallucinogenic drugs, with additional revenue from the prostitution of staff members. The Washington and Lee Publications Board elects the Executive Editor, who is kept locked where she belongs in the basement of the University Center.

The Ring-tum Phi does not welcome submissions or letters anymore. Don't cry to us; keep your opinions to yourself. We don't care. The Ring-tum Phi reserves the right to edit submissions for opinion and length, and if you're dissing us, forget about it. Letters and columns do not reflect the opinion of The Ring-tum Phi Editorial Board, just select members whom you may feel free to contact individually. Advertising does not reflect the opinions of The Ring-tum Phi or its staff, for those of you who got your panties in a bunch over that phonebook thing. This newspaper frequently violates current court definitions of libel and obscenity.

The Ring-tum Phi  
208 University Center  
Washington and Lee University  
Lexington, VA 24450

RETIREMENT | INSURANCE | MUTUAL FUNDS | TRUST SERVICES | TUITION FINANCING

**TIAA-CREF provides financial solutions to last a lifetime.**

Call us for a free consultation

Building your assets is one thing. Figuring out how those assets can provide you with a comfortable retirement is quite another.

At TIAA-CREF, we can help you with both. You can count on us not only while you're saving and planning for retirement, but in retirement, too.

Just call us. We'll show you how our flexible range of payout options can meet your retirement goals.

With TIAA-CREF, you benefit from something few other companies can offer: a total commitment to your financial well-being, today and tomorrow.

**With TIAA-CREF's Retirement Income Options,<sup>1</sup> you can receive:**

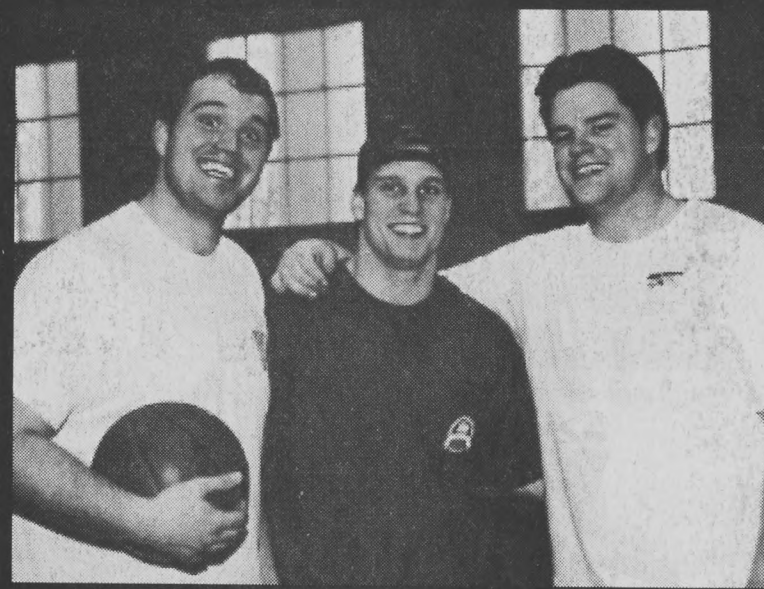
- Cash withdrawals
- Systematic or fixed-period payments
- Interest-only payments
- Lifetime income payments
- A combination of these

CREF GLOBAL EQUITIES ACCT. <sup>2</sup>		
36.05%	22.02%	18.75%
1 YEAR AS OF 12/31/99	5 YEARS AS OF 12/31/99	SINCE INCEPTION 5/1/92

**TIAA-CREF** Ensuring the future for those who shape it.<sup>™</sup>

1 800 842-2776  
www.tiaa-cref.org

Most W&L students use alcohol



Once a week or LESS!

Based on W&L CORE Survey data from 1998, 1999

Funded by a grant from



Virginia Department of Alcoholic Beverage Control

ONE DRINK =  
12 oz. of beer  
OR  
4 to 5 oz. of wine  
OR  
1 oz. of liquor

1. Depending upon your institution. Under federal tax law, withdrawals prior to age 59 1/2 are subject to restrictions, and may also be subject to a 10% additional tax. Additional restrictions also apply to the TIAA Traditional Annuity. 2. The investment results shown for the CREF variable annuity reflect past performance and are not indicative of future rates of return. These returns and the value of the principal you have invested will fluctuate, so the shares you own may be more or less than their original price upon redemption. Foreign stock markets are subject to additional risks from changing currency values, interest rates, government regulations, and political and economic conditions. TIAA-CREF Individual and Institutional Services, Inc. distributes CREF certificates and interests in the TIAA Real Estate Account, Teachers Personal Investors Services, Inc. distributes the variable component of the personal annuities, mutual funds and tuition savings agreements. TIAA and TIAA-CREF Life Insurance Co. issue insurance and annuities. TIAA-CREF Trust Company, FSB provides trust services. Investment products are not FDIC insured, may lose value and are not bank guaranteed. For more complete information on CREF, including charges and expenses, call 1 800 842-2776, ext. 5509, for the prospectus. Read it carefully before you invest or send money. © 2000 TIAA-CREF 1/00.

# Hollywood hits W&L



**marisa coughlan**  
(Teaching Mrs. Tingle)



**kris pollina**



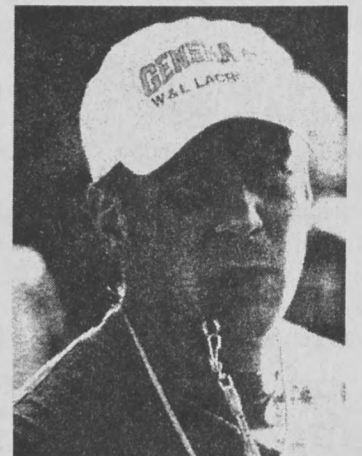
**david schwimmer**



**mike wienick**



**mark rolston** (Shawshank  
Redemption & Aliens)



**jim stagnitta**



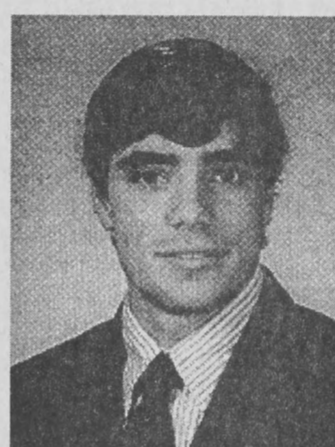
**mena suvari**  
(American Beauty)



**katie boening**



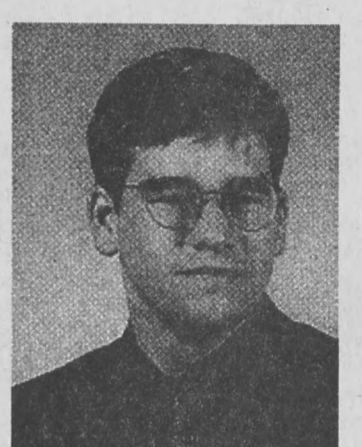
**peter gallagher**  
(American Beauty)



**greg meyers**



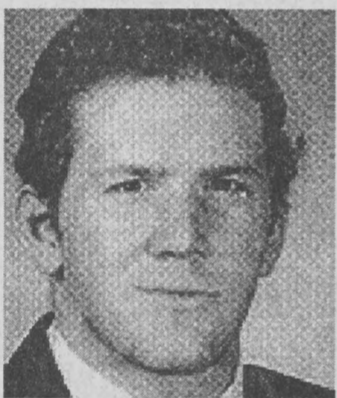
**nick carter**  
(backstreet boys)



**jason miller**



**michael rapaport**  
(Beautiful Girls)



**brian brantley**



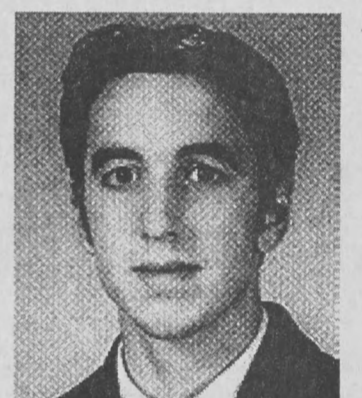
**wes bentley**  
(American Beauty)



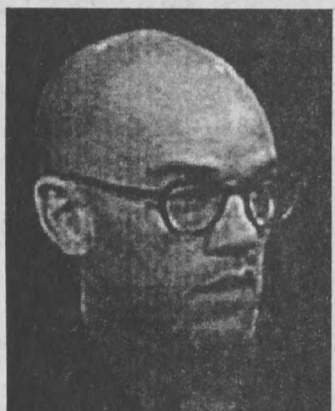
**zach fake**



**tom green**



**matt gooch**



**michael stipe**



**josh harvey**



**lucy liu**  
(Ally McBeal)



**emily belcher**



**linda carter**



**elizabeth harvey**



**topher grace**  
(That '70s Show)



**turner vosseler**



**angelina jolie**



**heather mcdonald**



**meg ryan**



**kate mason**



**sharon stone**



**michelle backus**