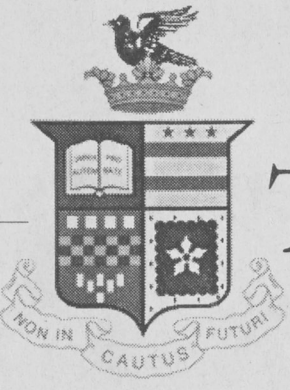


Arch
78.755
#552
v. 107
no. 7
c. 2



WASHINGTON AND LEE UNIVERSITY THE RING-TUM PHI

VII
VOLUME CVIII, No. 7
MONDAY, SEPTEMBER 13, 2004

The student voice of Washington and Lee University since 1897

Possible changes in store for fraternity pledgship

Faculty and students forming committee to study New Member Education

BY KATHERINE SHELL
SENIOR STAFF WRITER

After the Administration's problems with last year's fraternity New Member Education, generally known around campus as "pledgship," the IFC and fraternities on campus may be forced to rethink previous years' definition of "pledgship." Questionable violations of New Member Education led to investigations last year of several fraternities, though most accusations were later cleared. Though the IFC has not determined

what changes could be made this year to avoid new member education violations, rumors have circled campus of shortening the period of new member education. These rumors were not confirmed by IFC president Tom Pickering.

A committee, consisting of half students and half faculty, has been formed to "recommend solutions that benefit the fraternities, new members, and the university as a whole," Pickering says. "The IFC feels that the necessary guidelines

for New Member Education are already present in the IFC Constitution and the Student Handbook, but compliance is the main problem." After last year's complaints against the 8-week period of New Member Education, changes could happen this year.

Pledgship has already been shortened once, in 1998, from a previous 10 week period. The Student Affairs Committee, made of six faculty and six student leaders, reexamined New Member Education in 2001 and

submitted a report that recommended the New Member Education period remaining at 8 weeks.

Others feel that the crack-down of the University on fraternities and pledgship is part of the University's desire to keep W&L from the stigma of the "number 2 party school." A sophomore man affiliated with a Greek house said that "the fact that kegs and drinking games must stay off campus already displays the University's attempts to cut back on Greek-based, on-campus revelry."

Any changes in the 2005 New Member Education period should be revealed by the end of Fall Term, after Provost Williams announces the committee. Many students say they disapprove of such changes. Another sophomore Greek man said, "I haven't heard anything about a 4 week pledgship, but if that's the truth there's going to be a bigger brouhaha than when electricity was invented."

Sources chose to remain anonymous in order to avoid any possible repercussions on their Greek organizations' recruitments.

Traveller improves service

CHRIS LAUDERMAN
MANAGING EDITOR

Traveller began making Lexington rounds last Friday night after an absence over orientation week. Changes have been made over the summer to improve on the old system.

"We are excited to be able to announce new and upgraded service," said Jeb Brooks, Student Coordinator of the Traveller Committee.

Brooks went on to say that there would be shorter wait times and more responsive dispatchers and drivers for Traveller Dispatch.

Traveller is now separated into two services, Traveller Express and Traveller Dispatch. Traveller Express is keeping the same in-town route as last year, but the transportation means will be different.

This year, on Wednesday, Friday, and Saturday nights from 10 p.m. until 2 a.m., Mini-buses with professional drivers from Charlottesville will pick students up at the black Traveller benches.

The mini-buses can hold more people than the athletic vans previously used. Five mini-buses will travel the route. Route maps are posted on campus and are available online at traveller.wlu.edu.

Traveller Dispatch runs seven nights a week from 10 p.m. until 2 a.m. There are now three Traveller owned vehicles, two cars and a mini-van, so volunteers will no longer have to donate the use of their personal cars.

The phone number for Traveller has remained the same. Call extension 8900 and a Traveller vehicle will be sent to you anywhere in the area and will take you wherever you need to go in the area.

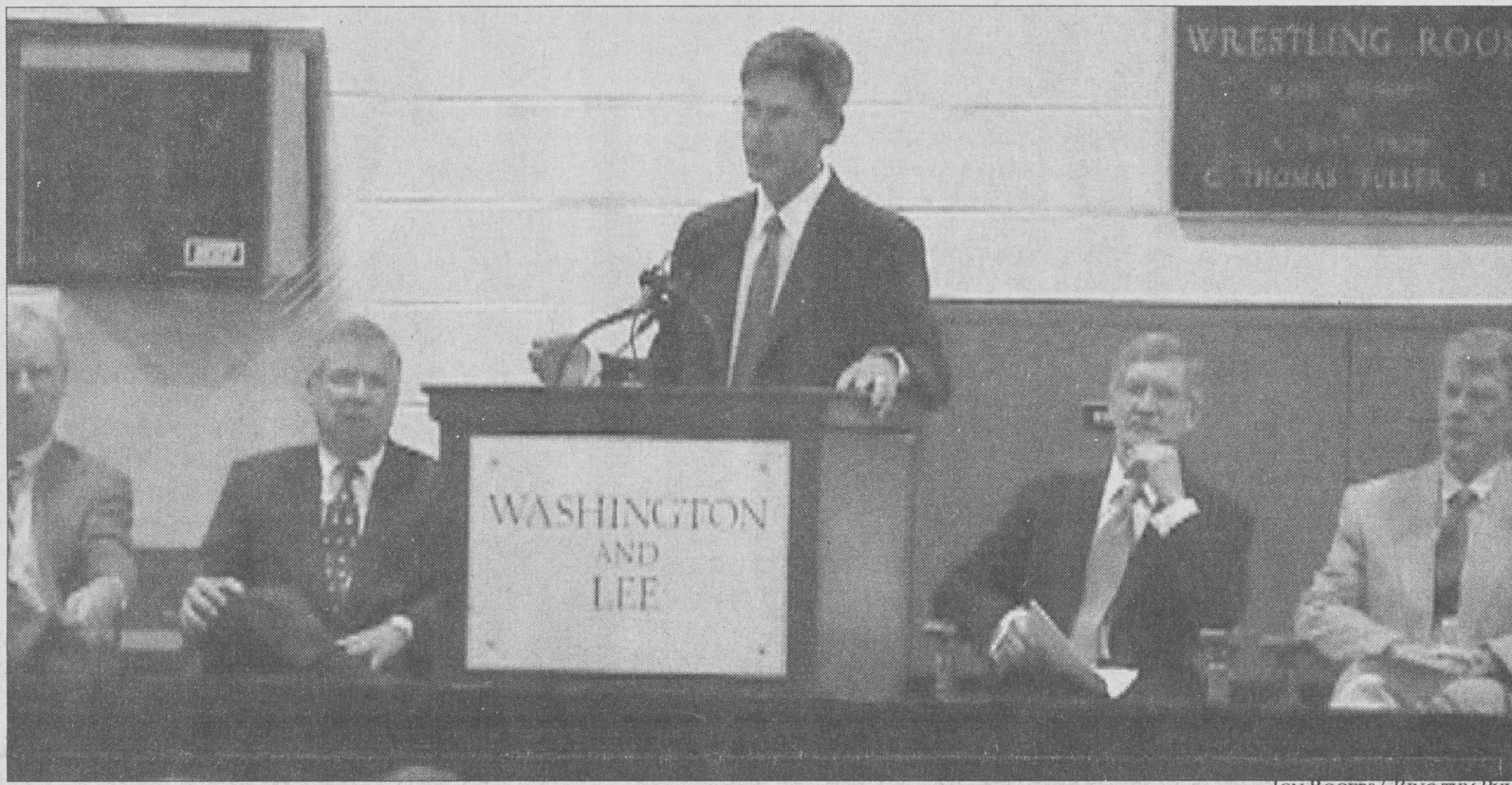
"I think the students last year did an amazing job of listening to their fellow students in redesigning the program to better meet current needs," said Dawn Watkins, Dean of Students.

Student reaction to Traveller's changes has been positive.

"It will aide the safety of students because they will be riding in actual buses, not packed like sardines in vans that were built during the Nixon administration," said junior Drew Davenport.

"It only works if everyone contributes," said Brooks. Student organizations that receive Executive Committee funding will be asked throughout the year to drive for Traveller Dispatch. Campus groups will only have to drive once during the academic year.

If there are any questions or comments about Traveller's services or if you would like to volunteer to drive, contact Brooks at brooksj@wlu.edu.



JON ROGERS / RING-TUM PHI

Convocation: Dr. Andrew Kumpuris, a W&L alumnus and Little Rock, Ark., cardiologist who was a member of President Clinton's bipartisan Health Care Task Force was the keynote speaker at Washington and Lee's Convocation last Wednesday evening. Kumpuris has advised U.S. Senate members on legislation dealing with patient safety, rural health care and Medicare reform issues. Kumpuris joined W&L's faculty in the 2003 winter term, during which he flew from Arkansas to Virginia weekly to teach a special undergraduate seminar on health care policy, finances and politics. Kumpuris, named one of six health policy fellows in 2001 by the Robert Wood Johnson Foundation, volunteered his time for the sought-after course. His talk, "The Shared Experience," will include reflections on W&L, where Kumpuris has actively served on the alumni advisory board of the University's Shepherd Program for the Interdisciplinary Study of Poverty and Human Capability. Convocation welcomed 461 freshmen to campus.

Returning students face theft on-campus and off

Freshman's dorm room broken into and several items were stolen; students' local storage units ransacked this summer

BY SARAH MURRAY
NEWS EDITOR

The start of the school year brought discoveries of theft for many W&L undergraduates. Storage units and dorm rooms have been pilfered during the summer or orientation week.

Several students met with losses after Frankie's Storage on Lee Highway was ransacked this summer. The robbery went unnoticed until students returned to

claim their belongings, but best guesses place the incident in August.

Caitlin WalkerLieb '07 arrived to discover that the storage unit she shared with Amy Nunez '07 had been pilfered. The two lost expensive electronics, such as a television and printer, and irreplaceable personal items, such as photographs, clothing, and sorority heirlooms. While it is estimated that the thief or thieves gained

the only items taken were a cellular phone and approximately 10 short-sleeved polo shirts.

access to between ten and fifteen bins, the actual number may never be known. According to Frankie's, it is impossible to tell the difference between an empty storage unit and one that has had

its lock cut off. After several robberies in recent years, the facility installed security cameras last week.

Theft is already present within W&L boundaries as well. When Andrew McWay '08 returned from a pre-orientation trip, he found his belongings missing and his Baker dorm room in disarray. A displaced window screen suggested that the burglar climbed through the first-floor window

to reach McWay's belongings. McWay was disappointed at starting off the school year this way at a university that "takes such great pride in its campus security and honor system."

Strangely enough, the thief never touched the laptop computer or iPod music player left in the room. According to McWay, the only items taken were a cellular phone and approximately 10 short-sleeved polo shirts.

Students claim W&L needs AΦA

Four undergraduate men attended last weeks informational meeting and share their reasons for considering this fraternity

BY ERIN JULIUS
EDITOR-IN-CHIEF

Four Washington and Lee men attended Alpha Phi Alpha's information session last Wednesday evening.

Representatives from James Madison University and University of Virginia's Alpha Phi Alpha chapters attended the meeting to share their experience as brothers. Alpha Phi Alpha, "offers so many benefits that are so necessary for men of color," said Michael McPheeters, a first-year law student and an Alpha Phi Alpha brother.

Derin Harrison, '07 and Andrew Elliot, '07 attended the meet-

ing and are considering becoming Alphas.

According to Dean Tammy Futrell, chapter before, "We are not creating anything new, just re-establishing a relationship," she said.

Alpha Phi Alpha does not have to seek Inter-Fraternity Council approval, "Black fraternities are a little different because they are not a part of the IFC," she said.

These men argue that Washington and Lee's cam-

pus could benefit from an Alpha Phi Alpha chapter.

"At the very least, Alpha should come to increase diversity and cultural awareness," said Derin

Harrison, "Too many of the Washington and Lee community have too little contact with those outside of their socio-economic background."

Andrew Elliot, said he wants an Alpha chapter on campus in order to offer students more of a choice.

"A number of perspectives that come to visit W&L ask each

year whether or not W&L has a historically black fraternity, or sorority for that matter," Elliot said, "Having a historically black fraternity would only help W&L's continuous mission to recruit minorities."

Harrison and Elliot both say that Alpha can help to correct injustices faced by minorities.

"The campus still displays its ignorance of the challenges faced by African-Americans or other minority groups. One simple reason is that W&L's campus creates some of these injustices constantly year after year," Elliot said.

According to Harrison, Alpha offers a different Greek experience. "To one who is not really into the frat life, all of the frats are the same. The only frat houses I know the locations of are ones who did more than just mixers and pre-game campus events. I would like to have a fraternity, not just for students of color, but for students who don't drink as well," he said.

Elliot said he is drawn to Alpha's special history.

"If I choose Alpha, it would be because of the rich history, the extensive connections, and the brotherhood the fraternity exudes and possesses. I feel these characteristics will mix well with W&L's great qualities," he said.

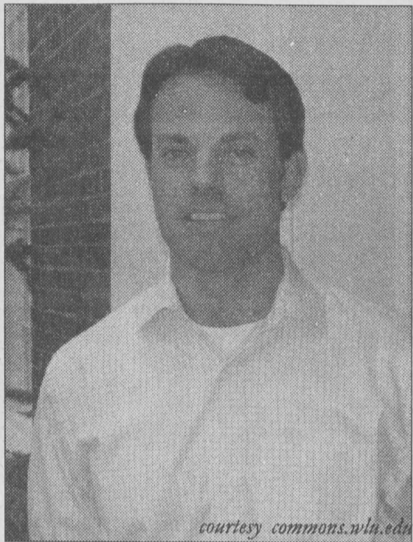
University Commons welcomes new staff members

New blood, including W&L grad, replaces Glassman, Jacobs in student life offices

BY ROB ARMSTRONG
STAFF WRITER

The 2004-2005 academic year at Washington and Lee kicked off last week with a number of new faces in the faculty and administration. President Burish's "Welcome" email to students has introduced a number of new names replacing those with which we were quite familiar. Matt Jacobs, Theresa Glassman, and Buddy Atkins can no longer be found in the Personnel Directory. All three of their positions have direct relations to an administration area dubbed "student life."

Todd Tate is the new director of Student Activities and Greek Life. His previous administration experience involves serving as the Director of Student Organizations and Programs at Drexel University. Mr. Tate also has extensive experience with Greek life. As an undergraduate at SUNY Brockport, he was a founding brother of the Phi Sigma Chi Chapter of Alpha Chi Rho National Fraternity at SUNY Brockport, and also was the Founding President of the Interfraternity Council. Mr. Tate was also the University Advisor to the Alpha Delta Epsilon Sorority at SUNY Geneseo. Mr. Tate was attracted to Washington and Lee because of its reputation and Honor System. When asked about specific plans for the Student Life Administration's first year, the new director replies: "Our Theme is Collaboration and Communication. We need to listen and work with the appropriate stakeholders within the University community. We are working in



HEAD HONCHO. New Student Activities and Greek Life Director Todd Tate.

3 areas; to finalize programming sponsored by the University Commons & Student Activities, specifically developing collaboration with others in the University community, Student Organizations, i.e. SAB, to determine where we can support their efforts and with the Greek community to provide a road map for students, faculty, administrators, headquarters and loyal alumni in the areas of self governance, social responsibility, facilities, financial management, perception, membership development, leadership development and assessment."

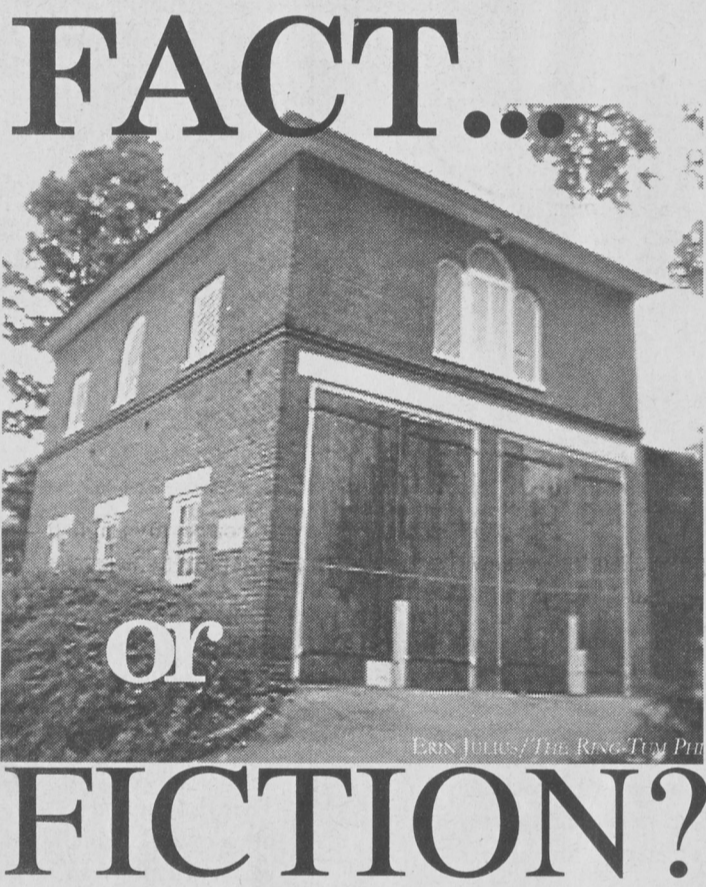
The new Assistant Director of Student Activities and Greek Life, Kristen Powell, graduated from Washington and Lee in 2000. Mrs. Powell was a Robert E. Lee Scholar and graduated Magna Cum Laude. As for Greek life, Mrs. Powell explains: "I was active in my sorority, I was an officer, attended a National Conference, and served on the Panhellenic Housing Committee. I spent four years on this Committee working to select the architects for the Sorority Houses, develop and finalize exterior plans, and develop and finalize the interior decorating scheme." After graduation, Mrs. Powell married a VMI cadet, Jim Powell '00, and lived in Texas for three years where she worked for Young Life, a

non-profit Christian outreach ministry to teenagers. But when her husband had since found a management position with Young Life in Rockbridge County, Mrs. Powell explains: "I had often remarked that if we ever moved back to Lexington, my dream job was to work at W&L as the Advisor to Sorority Women. Needless to say, I'm pretty excited about things have turned out."



TRIUMPHANT RETURN. Kristen Powell '00 assumes her dream job as Student Activities and Greek Life Assistant Director.

The final missing figure in this game of Guess Who? is Marguerite (Margo) McClinton, W&L's new Director of the Elrod University Commons and Campus Activities. Ms. McClinton has had various experiences in college administration, including serving as a Minority Admissions Coordinator at Harvard Graduate School of Education, as a Residential College Director at Washington University, and most recently Ms. McClinton served as the Associate Director of the Hardee Center for Women in Higher Education. Ms. McClinton, as new Director of the Commons and Campus Activities, is committed to: "building positive relationships with students, developing a successful club sports program, and the cultivation of student involvement, leadership, and relationships." She is also committed to celebrating student success through "End of Year Recognition of all groups." At the moment, Ms. McClinton is focusing on an International Film Festival to be held at the Elrod Commons Theater, from September 17th -19th; an event for which she hopes will be a large student turnout (*reference to article covering the festival*). While Ms. McClinton does not have a significant involvement with Greek life at W&L, she was a member of the Alpha Kappa Alpha sorority at Emory University, where she held various officer positions including Chapter Secretary and President.



Does Traveller really canter through campus?

BY ERIN JULIUS
EDITOR-IN-CHIEF

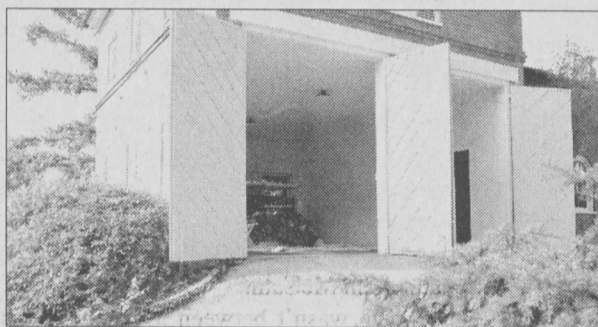
Local legend has it that General Lee's warhorse, Traveller, still roams through campus. Traveller outlived his master but dwelt in the stable attached to the Lee House during Lee's time in Lexington. Traveller shared the Lee House stable with another horse, Lucy Long.

"The story is that Traveller's ghost has been seen running through Washington and Lee, so by tradition the stable doors have been left open so he can come and go as he pleases," said Shana Pardue of Lexington Carriage Company.

Mrs. Lee is rumored to have been a superstitious woman, and the stable doors were originally left open at her request.

The Lexington Carriage Company offers tours of historic Lexington, and shares this myth of Traveller with its tour groups. Many university tour guides bring groups of visitors

past the stable to explain the historic legend. This school year, however, the front doors to the stable have been tied shut.



WE'LL KEEP THE LIGHT ON. Tradition demands that the doors to Traveller's former stable, the garage of Lee House, remain open.

"We are painting the doors and, with all the rain, trying to get or keep them dry," said Scott Beebe, head of the Physical Plant. "They will be open real soon."

At press time, the doors were shut once again.

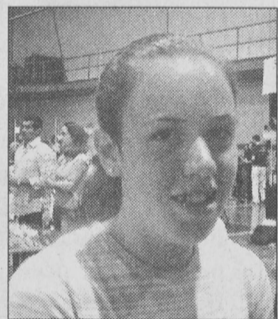
Physical Plant workers made sure to respect 150 years of history. "We did leave the back door open so Traveller could come and go," Beebe said.

No Traveller sightings have been reported to the Phi.

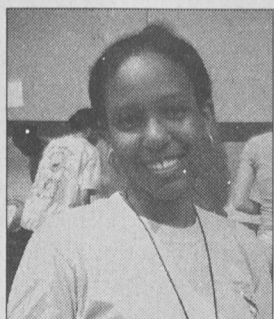
The doors to Traveller's stable are now painted a bright teal.

Fact or Fiction is going to be a regular feature in the Ring-tum Phi this year. If you have heard a campus myth or local legend that you would like the Phi to investigate email phi@wlu.edu or call ext. 4060.

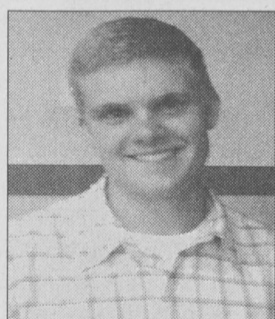
TALKBACK: What do you think about the historically black Greek organizations recruiting on campus?



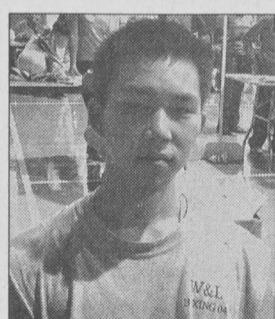
"Why do they need to be separate?"
-Nicole Merrulo '08



"It's nice to have that option... There's another avenue to take."
-Beth Dammlash '06



"Diversity at W&L is coming a long way and I think this will help."
-David Kronenfeld '07



"If they want it, go for it. It's not like the parties will be racially divided."
-John Kim '07

Nabors Service League Do It!

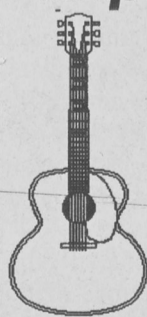
Come work for the only paper on campus with layout, ethics, and no debt.



The REAL independent Newspaper
Meetings at 5:15
Third floor, University Commons

MAKE YOUR OWN HOURS
All you do is sell the Hawaiian Tropic Break
2005 Travel Program Represent an American
Express "Student Travel" Company Guaranteed
Highest Commission, Free Trips & Great for
Resume Your pay equals your efforts AMERICAN
STUDENT Vacations 1-800-336-2260
www.americanstudent.info

STRINGED INSTRUMENT Expert Repair & Set-Up



Guitars & Bases

Acoustic & Electric

References Available
Local Service/Will Pick Up & Deliver!

LEO LORENZONI
Luthier 540-258-1401

WHAT A CHILD LEARNS ABOUT VIOLENCE
A CHILD LEARNS FOR LIFE

MONDAY, SEPTEMBER 13, 2004

THE RING-TUM PHI OPINIONS

THE RING-TUM PHI STAFF EDITORIAL

Botox Leyburn Library

Leyburn Library needs a facelift. Come on, it's approaching 30 and it just needs some work. The *Phi* thinks these changes need to be made and soon:

- More natural lighting, so students don't snooze through their studies.
- New carpet, not only is the old stuff putrid-looking, but it smells wretched.
- New paint, those colors weren't ever a good idea—not even in the 70's.
- New upholstered chairs. There are stains, who knows what has happened on those old ratty things. To cut costs, take furniture out of the Commons—no one uses it anyway.
- More computers, it is the twenty-first century.
- Carrolls: a student's home away from home, and we deserve more than those little wooden chairs.
- What is with Northern Auditorium? That red and green plaid carpet is just bizarre
- Renumbering the floors in some logical, numerical order (and getting rid of this "main" floor business) would be extraordinarily helpful.
- Laptop drop-off. No one wants to leave their precious data alone while they're in class or at lunch. The library should offer a safe place to leave laptops for a short time.

These additions would make everyone's study time much more pleasant. And Leyburn could turn 30 in style.

Quote of the Week

"This is the part of the price we pay, I guess, for living in paradise."

~Governor of Florida, Jeb Bush, speaking to residents over television before Frances hit.

Getting through the transitions of college life

Coming back to Lexington after the summer, things looked the same but yet something, imperceptibly, had changed. I was no longer a freshman. I could see the new wave filing into Lee Chapel in their nicest suits and sundresses, and already felt surprisingly detached from them considering it had been me one short year ago. As they say, a lot can change in a year. You never really understand the clichés until you are old enough or wise enough, and then you are struck by the simple truth of them.

Only recently, for example, have I fully understood why on the news after the death of a teenager or child people seem to tearfully lament most the fact that the child will never get to realize their dreams, start a family, or live a full life. When we were children, our dreams were pure and relevant yet as variable as a child's mood. You know how it is: one year they want to be a princess, the next a female Eminem.

But every year I get closer to graduating and truly setting out on my own, building a life for myself, I understand how invested I am in my dreams. The thought of losing those experiences, or missing out on the things I've always wanted, is a disheartening one.

I've begun to think of life as a series of transitions. That's part of the reason it can be hard at times, yet ultimately rewarding. First, there is childhood which is existence without responsibility or too many cares. Then the difficult teenage years set in and soon enough you're ready to leave the home you've known for eighteen years. College is a big transition, and an important one. Every person handles it differently.

Some throw themselves into the social scene and try to get as much fun squeezed into four years as possible, others buckle down and work. The latter are preparing for or prematurely entering the next stage: terror at the idea that in a year or two you have to find a job (or get into/pay for grad school,) move somewhere in this huge country (because there aren't enough jobs for all of us in Lexington,) and become a legitimate adult and decision maker.

Every once in a while, I find it helpful to take stock of things, re-evaluate my goals and scary as it is, what I'm doing with my life. (Why I chose this exact point in time is beyond me.) Basically, you have to periodically ask yourself what you want out of college.

In my experience, with a year behind me, I have enjoyed the new and exciting aspects of college life and independence. I have soul-searched, I have made amazing friends and sisters, and joined organizations where I could pursue my interests. Mostly, I am excited about my next three years; all the things I can improve on and the memories I will make. Transitions are exciting, and they are hard, but it will all be worthwhile if you make some true friends to help you along the way and get involved with things that you are passionate about.

So, to make a long story short, welcome back to a new year at Washington and Lee. I extend an extra special welcome to freshmen. Get what you want out of this year, have fun but still open a few books, and you will get the best of what college has to offer.



THE BIG PICTURE
ANNE FINLEY '07

Republican wit and wisdom takes over New York

The Republican National Convention took place in New York two weeks ago. Here are some of this Republican's favorite humorous and substantive quotes from the week.

Rudy Giuliani:

At the time, we believed we would be attacked many more times that day and in the days that followed.

Spontaneously,

I grabbed the arm of then Police Commissioner Bernard Kerik and said to Bernie, "Thank God George Bush is our President." And I say it again tonight, "Thank God George Bush is our President."

Maybe this explains John Edwards' need for two Americas — one where John Kerry can vote for something and another where he can vote against the same thing.

Senator John McCain:

Our choice wasn't between a benign status quo and the bloodshed of war. It was between war and a graver threat. Don't let anyone tell you otherwise. Not our critics abroad. Not our political opponents. And certainly not a disingenuous film maker who would have us believe that Saddam's Iraq was an oasis of peace when in fact it was a place of indescribable cruelty, torture chambers, mass graves and prisons that destroyed the lives of the small children held inside their walls.

Governor Arnold Schwarzenegger:

To those critics who are so pessimistic about our economy, I say: "Don't be economic girlie men!"

Our young men and women in uniform do not believe there are two Americas! They believe we are one America and they are fighting for it! We are one America — and President Bush is defending it with all his heart and soul!

Senator Zell Miller:

Never in the history of the world has any soldier sacrificed more for the freedom and liberty of total strangers than the American soldier. And, our soldiers don't just give freedom abroad, they preserve it for us here at home.

Vice-President Dick Cheney:

People tell me that Senator Edwards got picked for his good looks, his sex appeal, and his great hair. I say to them, "How do you think I got the job?"

The fanatics who killed some 3,000 of our fellow Americans may have thought they could attack us with impunity because terrorists had done so previously. But if the killers of Sept. 11 thought we had lost the will to defend our freedom, they did not know America and they did not know George W. Bush.

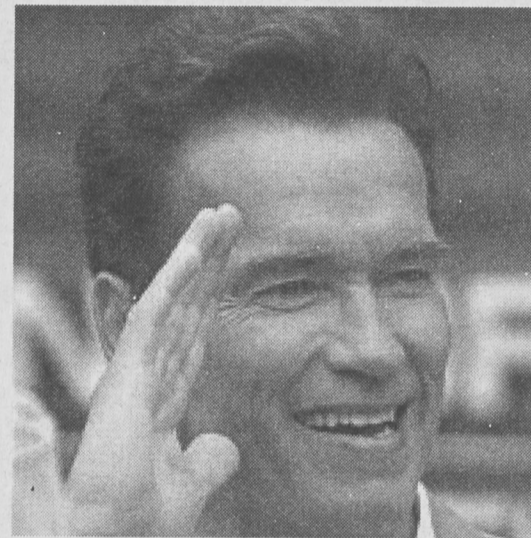


PHOTO COURTESY OF DESERETNEWS.COM

ARNOLD. The Governor was one of many to speak at the RNC.

President George W. Bush:

People sometimes have to correct my English — I knew I had a problem when Arnold Schwarzenegger started doing it.

This young century will be liberty's century. By promoting liberty abroad, we will build a safer world. By encouraging liberty at home, we will build a more hopeful America. Like generations before us, we have a calling from beyond the stars to stand for freedom. This is the everlasting dream of America — and tonight, in this place, that dream is renewed.

Letter to the Editor

Dear Editor,

Your recent article, "Potato man offers 'Intro to Parties 101,'" made us feel slightly bipolar in our response. While we praise Marshall Rule for his wisdom about class, the P word, and his lesson on moderation, we still feel his article left much to be desired in its diatribe against independents.

First, we are all independents and so are some of our friends, so the article slammed us like Alabama moonshine. And we are happy being independents. This is because we, contrary to popular belief, DO have a social life. Yes, we occasionally stay in and have sober movie nights, but we also know our way around a beer pong table and how to weave our way to the keg at a crowded frat house. We are not alone. There are tons of "Indies" at W&L who wake up with massive "headaches."

As a general statement of our beliefs, we do not have anything against Greek life. We think both Greeks and Independents are wonderful. We just used that wonderful sense of free choice and decided that being Greek wasn't for us. However, let me quote,

"By the time you have graduated you will realize it's not what srat you were in, but rather if you enjoyed your four years here. And that you can do no matter what Greek organization you joined." While the concept of being happy agrees with us, the preface that you must be in a Greek organization to be happy does not. We are happy here (and we are not expecting that to change) yet we also have no plans to join a Greek organization—we don't see this as a requirement.

Now, for our party standing. The reason we are #2 is that the Princeton Review is based on student surveys. We very well may party more than SUNY at Albany — it's just that we are proud of other things besides our party skills. This is what we do not have in common with our Albany brethren. If you check other non-party related lists, W&L ranks for Professors Bring Material to Life, Beautiful Campus, Happy Students, etc. We are blissful, well-adjusted students that are proud of our academic prowess as well as how fast our frat boys can down a garbage can full of grain (*ed-Aren't we all*).

SUNY at Albany has nothing on us. Their Best 357 rankings read like a badly produced horror flick - Their Students (Almost) Never Study, Long Lines and Red Tape, Campus is Tiny, Unsightly, or Both, Dorms Like Dungeons, Is it Food?, Least Happy Students, and the list goes on. What else did they have to write in their student surveys besides their land records at chugging Natty Light?

So you see, having #2 and all the rest should make us pretty damn proud.

In future, we implore you to turn your blame on other people who actually deserve it. Or, become a real journalist, seek out the independents, and interview/live in their shoes for a night. Just don't come knocking on our door-look for us at the loudest basement band and the stocked bar.

Sincerely,

Steph Wiechmann '07
Sheryl Silvers '07
Kristine Holda '06
Theresa Dougherty '07

THE RING-TUM PHI

Editor in chief **Erin Julius**
Managing Editor **Chris Lauderman**

News Editor **Sarah Murray**
Opinions Editor **Caley Anderson**
Asst. Opinions Editor **Anne Finley**
Arts & Life Editor **Emily Edwards**
Photography Editor **Corbin Blackford**
Sports Editor **Chad Kiewiet de Jonge**

Copy Editors **Kate Zawyrucha**
Catherine Swan
Alexa Moutevelis

Business Manager **David Seifert**
Circulation Director **Rob Rain**
Distribution Dir. **Stephen Lipscomb**

The Ring-tum Phi is published Mondays during the undergraduate school year at Washington and Lee University, Lexington, Virginia. The Ring-tum Phi is a member of The Publications Board, but is otherwise independent.

The Ring-tum Phi welcomes all responsible submissions and letters. All submissions must be e-mailed to phi@wlu.edu or in the University Center mailbox by 5 p.m. Friday to appear in the following week's edition. The Ring-tum Phi reserves the right to edit submissions for content and length. Letters and columns do not necessarily reflect the opinion of The Ring-tum Phi Editorial Board. Advertising does not reflect the opinions of The Ring-tum Phi or its staff. This newspaper observes current court definitions of libel and obscenity.

The Ring-tum Phi
University Commons Room, 341
Washington and Lee University
Lexington, Virginia 24450
Telephone: (540) 458-4060
Fax: (540) 458-4059
Email: phi@wlu.edu
Subscription rate \$40

Phi Quick Poll

"In your opinion, is Washington and Lee better, worse, or the same as it was one year ago?"

Better-
14%

Worse-
20%

Same-
41%

Not Sure-
24%

49 students polled. Poll has 95% confidence in a +/- 5% margin of error

Someone I'm not- People who change to fit the University

Has anyone out there ever noticed that this place has an enormous power to change people? Aside from the Class of 2008, we've all seen that one freshman, right? You know, the one who claims to have been a big drinker in high school, and starts trying to down x amount of vodka, whiskey, what have you? And then it becomes plainly obvious that the freshman either didn't drink in high school, or only had the occasional beer. By the time this person has left W&L, they've probably come to see alcohol

as not just a form of entertainment, but a way of life. It's how they tried to fit in, like the New Yorker who unsuccessfully tries to adopt a southern accent.

Or take the case of the girl who comes in her freshman year and becomes great friends with the other girls on her hall. A seemingly unbreakable bond is created. Then, rush comes and goes, and some girls end up in one sorority, higher up on the dubious social pecking order, and some lower. In a lot of cases, disdain, resentment, and a false acceptance of the "truth" of the enmity they're supposed to feel for one another take over, and ruin the friendship. I never cease to be astonished by the sheer number of freshmen here of both genders who place paramount importance on the particular frat or srat that they get into. Not only that, but the sheer intensity of the emotions when people find out the results of Rush are surprising. One girl I knew from the Class of 2007 last year cried when she had to "settle" for what she called a "second-rate" sorority, and I suspect this scene plays itself out quite a few times each year.

On the flip side of the coin, let's take two roommates, guys who hunker down in one of those corner dorms at Graham-

Lees, or something. They become best of friends through sharing the fun and drama inherent to any freshman year. Then, once again, rush comes and goes. One ends up in fraternity x, the other, in fraternity x's hated rival frat. A cold silence falls over their double room, and they start spending less and less time with each other while spending more and more time with their brothers. By the time their sophomore year comes, they'll probably only speak to each other rarely, and formally at that.

Please understand, before you

compose your scathing, brilliantly-worded letters to the editor, that this is not an attack on the alcohol culture of W&L, nor is it an attack on the Greek system, as we've had quite enough of those in the past year alone. There are plenty of people who do not fall for the traps mentioned above, and these factors that change people can indeed change them for the better. That's what college is supposed to do. No one is the same when they leave here as they were when they came in. But there is a difference between desirable change and non-desirable change. Changing your persona from an uncertain, naive high school graduate to a confident, intelligent college student is one thing, changing into a heavy drinker who parties until 5 four times a week just because everyone else does is something else entirely.

It just seems that enormous peer pressure and a desire to fit in lead people into far too many bad decisions at this University, leaving aside the exception that many shy partyphobes have been broken in by their presence

at the University. Sometimes, when I read the reports from last year's frat investigations, or when I hear the rumors of what REALLY happened on such-and-such a night, I wonder what could possibly drive someone to want en-

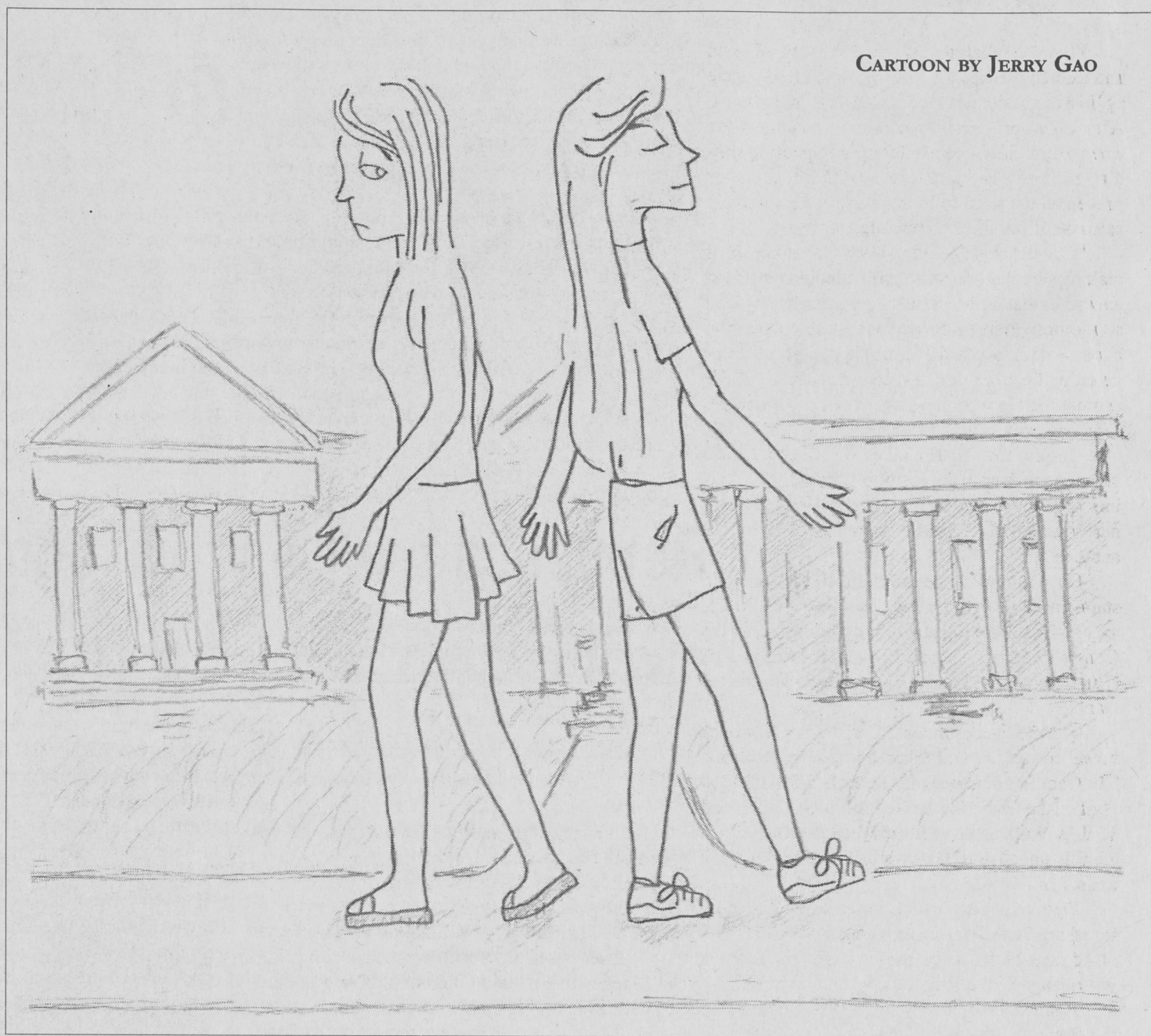
whatever fraternity it is, but that can be done without humiliation or quasi-torture, and really, the appreciation gained is not one of brotherhood or friendship, it's a sort of tribal pride in having mutually endured the same hazing rituals.

plenty of people who put their friends first, and their Greek affiliation second. But it seems like too many do not. Too many forsake friendship, activities they like, and even class in the name of making sure they fit in.

your social life here. If you become someone you're not for the sake of fitting in, you'll be left with next to nothing once you graduate.

So best of luck to you, noble freshmen of the class of 2008. You made a won-

Φ MODERATE'S MUSINGS
CALEY ANDERSON '06



CARTOON BY JERRY GAO

trance to a frat so badly that they'd not only put up with such nonsense, they'd be enthusiastic about it. It's supposed to be a brotherhood, not the Citadel. It IS true that it makes the pledges, sorry, new members more appreciative of their acceptance into

Once again, this is not everyone. There are plenty of fraternities and sororities that are truly out to be there for their brothers and sisters. There are plenty of people who actually gain character from their exposure to alcohol here, rather than lose it. There are

Part of college is, of course, finding out who you are. But the emphasis there is on "finding," as opposed to "inventing." Do not let Washington & Lee dictate to you who you must be, because there are a ton of things more important than

derful choice in coming here, but while you explore the University and try to find your niche, look around you. Make sure that you're someone unique.

E-mail me at Andersonc@wlu.edu

Ups and Downs

Opinions Editor Caley Anderson gives you his take on what rose, what fell, and what stayed about the same this week at W&L.

- Commons-** ↑ Freshmen and sophomores are impressed. I take back what I said last year. In an ironic reversal, they tore down a parking lot and put up paradise.
- Class of 2006-** ↓ Will go down as the last class in W&L history to really be hazed.
- Women's V-Ball-** ↔ A disappointing loss in the Invitational, but these ladies are just now shaking off the rust. Watch out when they get started.
- Football-** ↔ Despite the naysayers, I'm from San Diego, and I know bad football when I see it. These guys are a lot better than their first game indicates. Besides, there's the home opener curse (tm) to consider.
- Oprah-** ↔ Does anyone else find the contrast of W&L + Oprah very strange? At least she didn't mountainboard and churn apple butter.
- Wal-Mart-** ↑ Has found SEVERAL employees younger than 60.
- Soccer, Men's and Women's-** ↔ So very, very close.

- Don Tequila's-** ↑ Remains the best (only) Mexican food in town. Don't EVEN say Taco Bell. Don't even think it.
- Calyx-** ↑ Classy cover, solid content means recovery from last year's travesty.
- Traveller-** ↑ New changes bump up this organization from AAA to the Major Leagues.
- Class of 2008-** ↑ Higher SATs/Grades than ever before, and they seemed to move in in half the time that my class did. And that, of course, is the real measure of any W&L freshman class.
- Weather-** ↓ Pretty bad, but my sympathies go out to the Floridians at W&L, as well as any Caribbean residents.

E-mail Andersonc@wlu.edu with comments/questions

Φ
*Write for
Phi Opinions*

*E - m a i l
Andersonc@wlu.edu*

*Visit Sweet Things
They are delicious*

It's time to exercise something
other than your mind.

Curves

Student Membership
\$99
Per Semester

Finally, a place to work out that fits your student budget and a busy student schedule. Curves is 30-minute fitness, common sense weight loss, and all the support you need to achieve your goals.

Curves

www.curvesinternational.com
(540) 464-5546
780 N.L. Hwy
Lexington, VA 24450

Virginia Capital Semester

Make the most of your spring semester!

Make the most of your spring semester with an exciting internship, challenging college courses, interesting guest speakers and all the drama of Virginia politics.

Experience Virginia's capital city during the excitement of a legislative session while continuing your studies on a full-time basis through course work at Virginia Commonwealth University — and earn a \$1,000 internship stipend.

For more information and application:

- <http://www.vcu.edu/capitalsemester>;
- Virginia Capital Semester, L. Douglas Wilder School of Government and Public Affairs, P.O. Box 842028, Virginia Commonwealth University, Richmond, VA 23284-2028; or
- Contact Professor Ralph Hambrick at (804) 828-8053, or vacapitalsem@vcu.edu.
- Application deadline is Oct. 1, 2004.

an equal opportunity/affirmative action university

Virginia Commonwealth University

Orchardside Yarn Shop
Knitting Specialty Shop
273 Raphine Road
Raphine, VA 24472
540-348-5220 • 1-877-NIT-YARN

Knitting cottage nestled along the creek which carries a fabulous selection of basic and novelty yarns, kits, needles and accessories. Customer service from start to finish with your projects. Mail order and Internet accessibility made easy.

Call for workshop & class information.

*Halfway between Lexington and Staunton
On I-81 I-64 at exit 205, Raphine. 4 miles west on
Route 606, Raphine Road. Located on a working
farm that offers "U-PICK" opportunities for fresh
fruit when in season.*

Tues - Sat 10:00 - 5:00, Wed until 8:00
www.oysyarnshop.com

Volleyball team takes third place at W&L Invitational

By SARAH BLOOM
STAFF WRITER

Five volleyball teams traveled to Washington and Lee University this past weekend to compete against the Generals in the 2004 W&L Invitational. After only a pre-season warm-up to get adjusted to a new team, the Generals left the competition winning the consolation bracket. ODAC regulations prevented the team from training together as early as some of the other competing teams.

"Coach [Bryan Snyder] does a fabulous job of making sure that we get some challenging teams to appear so that we are pushed to our limits," voiced sophomore Ashley Hurt. "We start our season about a week and a half after the teams we competed against, so our first matches are typically against people who have already been competing for a few weeks."

Despite this disadvantage, the Generals still claimed the third place position. Individually, Juniors Christine Gladysz and Susan Gaillard were named to the all-tournament team for Washington and Lee.

On day one of the tournament, the Generals started off strong, defeating Catholic 30-17, 30-21, and 30-20. Senior Captain Emily Wolfing lead the Generals with 19 kills and 12 digs. Hurt and juniors Laura Byrne and Gladysz also scored big for the team.

The next match against Christopher Newport, however, did not end favorably for the Generals. The Captains defeated the Generals 5-2. This time Hurt set the tempo for the Generals with 18 kills and 10 digs. Wolfing again helped lead the charge with 13 kills and 14 digs. Gladysz followed suit, with 42 assists and 12 digs.

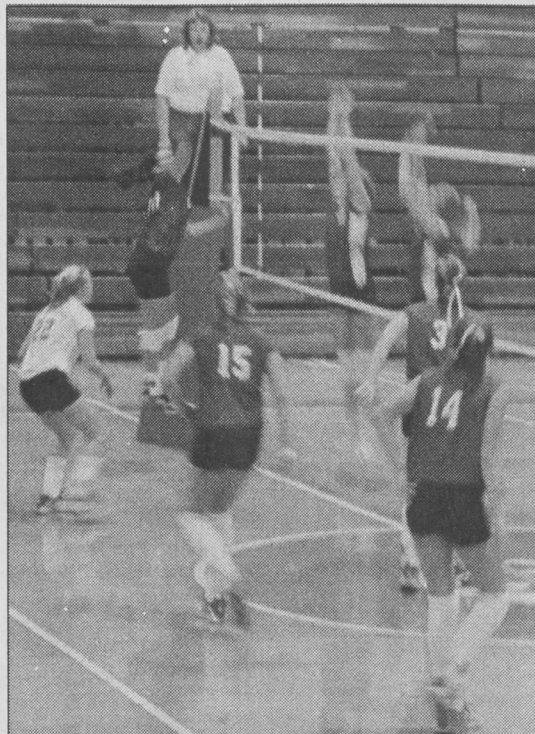
Day two very much resembled day one. Frostburg State defeated the Generals 27-30, 24-30, 30-25, and 22-30. Then, the Generals rebounded to win against Catholic in the consolation game.

Against Frostburg State, Wolfing again lead the Generals in scoring and Gaillard and Gladysz were right behind her to carry the team. Unfortunately, this was not enough to push the Generals ahead of Frostburg.

"Although we didn't play as well as we were hoping, the year is young, and we have a lot of expectations coming into other tournaments this year," said Hurt of the loss. "We want to win as every W&L team does."

The team bounced back, however, to defeat Catholic in the consolation round. Wolfing, Gaillard, Hurt, and Gladysz teamed up to bring the Generals to victory. Together, the girls claimed 36 kills, 35 digs, and 40 assists.

"We definitely played better at the end of the tournament," said sophomore Lauren Edmonson



CORBIN BLACKFORD / THE RING-TUM PHI

SPIKE. A General goes for a spike during the W&L Invitational. The team ended up finishing in third place.

of the victory. "It was just hard because these were our first matches and they don't reflect where we will be at the end of the season."

The girls look forward to their next chance to compete against Mary Washington on Thursday.

"After this next week of practice, we're going to be ready to go," said Edmonson. "Our goals are to cut down on unforced and communication errors and mostly we're going to have fun and play with heart."

2004 ODAC Women's Volleyball Preseason Poll

1. Washington & Lee
2. Bridgewater
3. Randolph-Macon
4. Roanoke
5. Lynchburg
6. Emory & Henry
7. Eastern Mennonite
8. Virginia Wesleyan
9. Guilford
10. R-M Woman's
11. Sweet Briar
12. Hollins

Only 148 yards of offense prevents season opening win

W&L SPORTS RELEASE

ALFRED, N.Y. — The Washington and Lee football team held Alfred University to just 267 yards of total offense, but gained just 148 yards itself in falling to the Saxons, 23-8, on Saturday afternoon in Alfred, N.Y.

The Generals (0-1) got on the board first when an Alfred punt snap went out of the back of the end zone with 12:32 remaining in the first quarter. W&L held the lead until Alfred's Chris Reynolds nailed a 30-yard field goal to make the score 3-2 with 4:38 remaining in the opening period. Reynolds booted two more field goals in the second quarter, one of 26 yards and another from 31 yards to give the Saxons (1-0) a 9-2 halftime edge.

After a scoreless third quarter, the Saxons scored the game's first touchdown as Chaz Bruce scored on a 31-yard run with 14:30 remaining. Bruce then improved the lead to 23-2 on a 40-yard touchdown run with 7:03 remaining, before the Generals answered on a 12-yard touchdown

strike from junior quarterback Greg Tweardy (Bethel Park, Pa./Bethel Park) to junior wide receiver Clark Kensinger (Columbia, S.C./Oakwood) with 1:42 remaining. The PAT attempt failed producing the final score.

W&L was led by Tweardy, who completed 17-of-42 passes for 157 yards, one touchdown and two interceptions. Senior wide receiver Taylor Callahan (Atlanta, Ga./McDonogh) caught six passes for 75 yards, while junior running back

Michael Lockett (Allenwood, N.J./Wall Township) carried 18 times for 32 yards. Senior linebacker Lloyd Wilson (Austin, Texas/Stephen F. Austin) led the defense with nine tackles. Sophomore linebacker Robert Foster (Brentwood, Tenn./Montgomery Bell) notched four tackles, a sack and an interception.

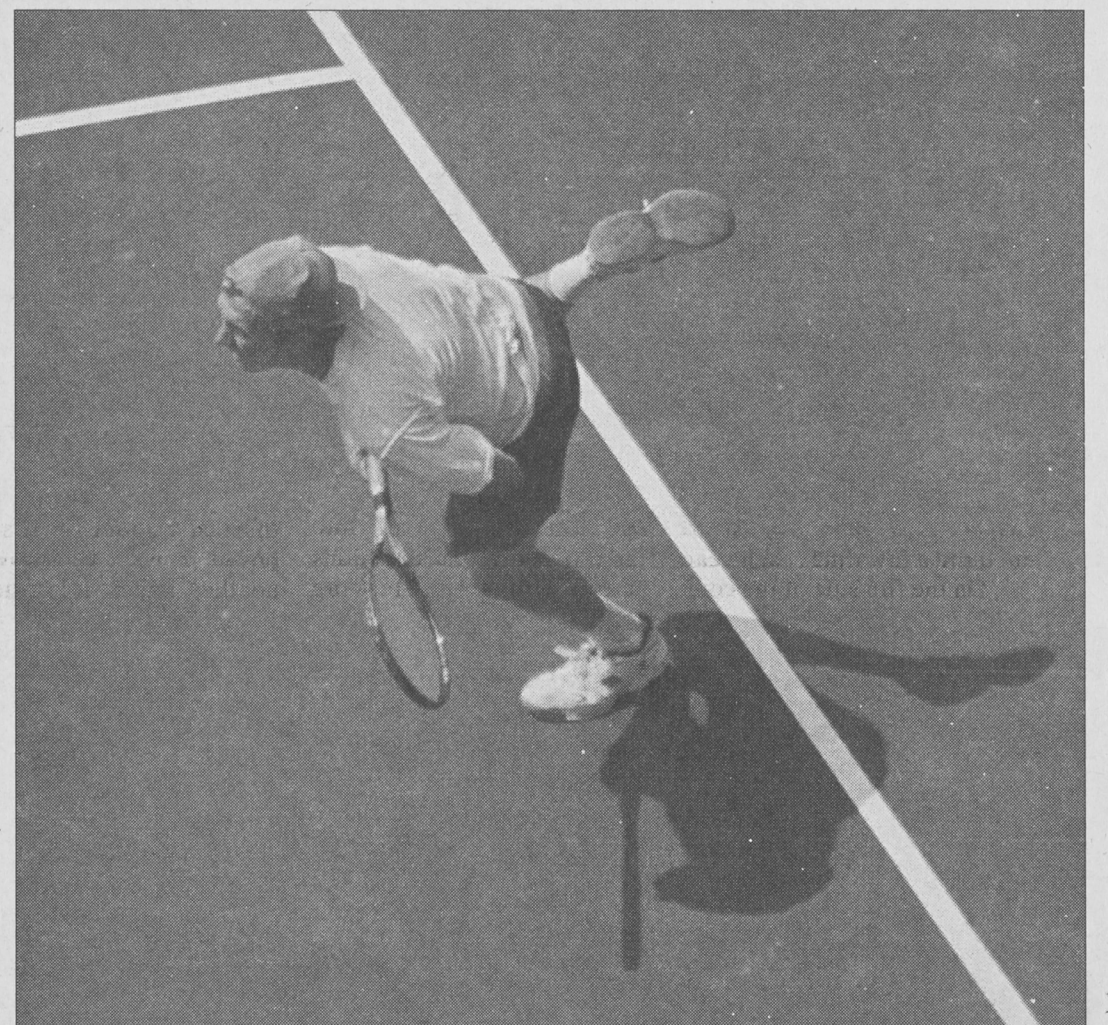
Alfred was led by Bruce's 86 yards and two touchdowns on 20 carries.

Quarterback Ron Duliba completed 11-of-25 passes for 156 yards and one interception, while Nicholas Gatto paced the Saxon defense with eight tackles and three of Alfred's seven sacks.

Washington and Lee returns to action on Saturday as it hosts Sewanee for a 1:00 pm contest.

2004 ODAC Football Preseason Poll

1. Bridgewater
2. Hampden-Sydney
3. Emory & Henry
4. Catholic
5. Randolph-Macon
6. Washington & Lee
6. Guilford (tie)



CHAD KIEWIET DE JONGE / THE RING-TUM PHI

SERVICE. The men's tennis team hosted Davidson, George Mason, and James Madison in the W&L Fall Classic this past weekend as a fall warmup.

This Week in Sports

Tuesday	Wednesday	Thursday	Friday	Saturday	Sunday
• Open	• M Soccer vs. Southern Virginia--4 • W Soccer at Randolph-Macon Womens--4	• Volleyball at Mary Washington--7	• Open	• Cross Country at NYU--10 • W Soccer vs. Randolph Macon--11 • Volleyball at VA Wesleyan--11 • Football vs. Sewanee--1 • Field Hockey at Muhlenberg--3 • M Soccer vs. Bridgewater--3 • Golf at Randolph-Macon--TBA	• Open

The Antique Mall

760 N. Lee Highway
College Square Shopping Center

40,000 Square Feet
160+ Dealers

Area's Largest Antique Mall, specializing in used furniture and "cool" accessories for the "cool" house or apartment.

There's something for everyone!
Monday-Saturday 10 a.m. - 6 p.m.
Sunday 11 a.m. - 6 p.m.
(540) 464-5555

Join Phi Sports!

Spring Break 2005

Travel with STS, America's #1 Student Tour Operator to Jamaica, Cancun, Acapulco, Bahamas and Florida. Now hiring on-campus reps. Call for group discounts. Information/Reservations 1-800-648-4849 or www.ststravel.com.

For Rent

Parents/Alumni Weekends - Beautifully restored and modernized cabin on 45 acres in mountains 15 min. west of Lexington. Completely furnished with period antiques and local art. 2 BB?BA - sleeps 6. Separate guest cottage - sleeps 2. Perfect for 2 to 3 couples. Private vacation residence occasionally available for rent either weekly or nightly w/ 3 nt. min. Call (804) 355-0002.

AVAILABLE NOW !!

WIRELESS INTERNET
in Downtown Lexington

INTERNET TO GO...

- ▶ HIGH SPEED
 - ▶ PORTABLE
 - ▶ NO LAND LINE REQUIRED
- for more info call:

LexFirst

A full-service ISP.

464-4500

17 N. Randolph Street

Apple spoken here

Field hockey drops season opener to Johns Hopkins, 2-0

Even with opening loss, Generals have hope for improved season

CHAD KIEWIET DE JONGE
SPORTS EDITOR

Although the Field Hockey team opened with a 2-0 loss to Johns Hopkins (1-2), a team leader has high hopes for the coming season.

"Hopkins is probably one of the best teams our program has ever faced. Although we played

them tightly last year, I think that they have improved their game immensely, as have we," senior midfielder Kitt Murphy said.

The Blue Jays did not allow the Generals to take a shot during the first half, and were able to score in the 16th minute. Junior General goalkeeper Courtney Harrison made 2 saves during the half.

"Their passing game really enabled them to control the ball and the flow of the game in the first half," Murphy said.

After halftime, however, the Generals picked up the pace and went on the offensive. The team combined for six shots in the second half and had five penalty corners.

"Our goal for the second half was to go out and work as a team to take possession and to earn some short corners," Murphy said.

Although the team accomplished this goal, the Generals were not able to get to the back of the net. The Blue Jay goalkeeper only had to make one save to retain the shutout.

Johns Hopkins sealed their victory with a goal in the 56th minute against junior goalkeeper Elise Gelinias. During the half, Gelinias made three saves.

"Overall I think our team played very well during the game and I am very excited for where we could go this year," Murphy said. "We got a very talented group of freshmen this year that will continue to push this program in the direction it needs to go."

Last year the team finished with a 10-9 record and lost in the ODAC Tournament semifinals to the ultimate ODAC champion, Eastern Mennonite.

The ODAC preseason poll predicts that the Generals will finish third in the ODAC's this season.

The Generals will travel to Muhlenberg College for a 3:00 game next Saturday in search of the team's first victory.



CHAD KIEWIET DE JONGE / THE RING-TUM PHI

WHICH WAY DID IT GO? Sophomore forward Amy Brown focuses on the ball as it rolls past two defenders in the team's 2-0 loss to Johns Hopkins University.

2004 ODAC Field Hockey Preseason Poll

1. Virginia Wesleyan
2. Eastern Mennonite
3. Washington & Lee
4. Lynchburg
5. Roanoke
6. Randolph-Macon
- T7. Bridgewater
- T7. Sweet Briar
9. R-M Woman's
10. Hollins

Multiple aspects of the sports world provoke anger, annoyance

My first column of the year actually has quite an interesting back story. Initially I intended for it to be my last article last year before evacuating because, frankly, many of you will be really angry after reading this. However, I decided that it would make just as fitting of an introduction for the new school year. Basically, this is a series of short rants about the many things in the sports world that anger me.....enjoy.

-The Yankees are ruining baseball - It's true, it's not just a buzz phrase. Without a salary cap, low-

market teams will never be able to sustain success like the Yankees. Key word, "SUSTAIN"....yes, the Marlins and Angels won a World Series each, but the talent continues to flood into New York and creates a system where the only way to compete is to keep up in the arms race as Boston has. There is supposed to be ebb and flow to teams' success. In order to sustain success a team needs great management that keeps a balance of old players, new players, homegrown talent, and veteran free agents as the Braves have for so long. The Yankees really are the dark empire and Steinbrenner really is Satan's baseball-addicted nephew.

-Get Off Stupid Athlete's Backs - First Kellen Winslow declares that he's a "(expletive deleted) soldier" and then Garnett joined the ranks. I, for one, don't really care. Neither was trying to suggest that sports match the intensity, danger, or importance of warfare. Both were just trying to say that the other team is their bitter enemy and they're playing with great passion. I have the utmost respect for our soldiers, but not for the intelligence

of professional athletes. Garnett has less college experience than most W and L students accumulated in their junior year of high school. So stop listening to him talk and stop getting offended over nothing!

-Don't Believe a Public Denial - Whenever an athlete gets accused of something they always say they had nothing to do with it. It sounds like P. Diddy saying he had nothing to do with a shooting, except that his close friend and employee Shyne miiiiight

have squeezed a few rounds out. Anyways, Ricky pulled out Billy Bong Thorton, Ray Lewis had something to do with the murder, O.J. did it, etc. This is especially true with supplements and steroids. Almost all players are suspected of using them, but in order to even get accused there needs to be extra evidence that makes it practically obvious.

-Don't Jump on Bandwagons - This means that unless you are from New York or Los Angeles (or have some other direct tie), you have no right to root for either the Yankees or the Lakers. This applies across the board. The Rams became "the greatest show on Earth" and all of a sudden everyone had been a fan of them for years.....what a coincidence (mutter). Be a hometown fan, be loyal to your state, city, or region. What makes sports fun is when your team is beating a friends', not when your team of the year, which happens to be the best, beats up on everybody. There are fans from St. Louis that earned the joy from that Super Bowl win, they invested their fandom in the Rams for years. Frontrunners come in for the good stuff

and skip the bad years that separate a true fan from, well, a girl. Note: this doesn't apply to college sports, where parents' school can come into play.

-Hockey is the Greatest Sport Ever - I'm sorry I had to deceive you like this, I actually hate hockey with a passion. I figured more people would read it with this heading. Going to games is fun, but watching it on TV is almost as bad as watching soccer. Pass, Pass, Pass, Shoot and Miss, Pass, Pass.....snore.

-A Solution for the WNBA - Watching women's basketball is like watching a junior high game except without your son or brother playing.

No one dunks, no one drives, no one can even really shoot that great. Therefore, I suggest they lower the hoop to 8.5 or 9 feet. Basically, the game would have a ton more dunking and blocked shots, and shooters would be much better once they adjusted. I'm not saying I'd watch, but then I also didn't think I'd ever watch the Outdoor Games.

"Mmm, I think I'm going to be in trouble for that one, haha" -Ron Burgandy

-Driveway Games Deserve a Chance - I can't believe ballroom dancing is an Olympic sport. Personally, I feel that games such as kickball, wiffle ball, pool baseball, pickle, wallball, and any other games that you invented in your driveway as a kid should be Olympic sports as well as professional

sports. That would be so much fun, just look at what happened in "Basketball."

-International Basketball - International basketball is constantly changing for the sole purpose of screwing <ahem> sorry....."handicapping" the U.S. Despite the obvious fact that the U.S. had a pathetic excuse for a dream team (Lamar Odom starting at the 4?), we still should win. The three point line is 3 feet closer and we still couldn't hit anything, it was sad. But we must remember that these teams play together so much more and have chemistry that we can't create in a few weeks. Having said that, it was rather obvious that every referee was biased against the

U.S. I saw a couple fouls called on Duncan that only could have been called "jumping." I wasn't aware jumping was a foul. So what's the solution? Send the Pistons? Don't be so shortsighted. No owner is going to risk his entire team as the rest of the league stays healthy. The only solution is for our stars to finally become so sick of being the laughingstock of the Olympics that they actually do something about it. If Garnett, TMac, Kobe, Vince, and Jermaine O'Neal care about this country at all they'll take this year's embarrassment personally and show up in four years ready to shut that annoying little prick from Lithuania.....Sarunas Jasikevicius (had to look it up for spelling).

Watching women's basketball is like watching a junior high game except without your son or brother playing.

The Bookery

Over 40,000 Bookes, New, Used & Rare!

New Release

Rockbridge Heritage

A Photographic Essay of Rockbridge County

By Washington and Lee Alumna (1966) Thornton "Tim" M. Henry and his daughter, Ruth Henry Keyes



Signed Sally Mann & Cy Twombly

We have hundreds of Unique Books

New, Used, Collectible and Signed

464-3377, 107 W. Nelson St.
Open 7 days a week at 9 a.m.

Phi Sports • Phi Sports • Phi Sports

WIN-WIN SATURDAY!

If the Generals Football Team WINS - so the the FANS!

Take 20% Off All Washington & Lee Merchandise. Saturday Only!

UNIVERSITY SAYRE SPORTWEAR

Downtown Lexington
15 W Washington Street
464-3000

Exclusive Football Polo for 2004

CUSTOM embroidery **CUSTOM screen printing** **CUSTOM engraving**

www.universitysportwear.com

Want to write or edit for Phi Sports? All positions available!

W&L Floridians fight through wind, rain, floods to come back to campus

BY JORDAN ANDERSON
SENIOR STAFF WRITER

With an unusually harsh hurricane season upon us, many Washington and Lee students have experienced the hardships of dealing with three hurricanes in a two month period.

Most recently, Hurricane Frances, packing winds as strong as 140 mph, disrupted weather patterns throughout the Eastern Seaboard, as far south as Florida and as far north as Richmond.

Much of the rain experienced during the end of Orientation Week was a shadow of Frances' former self.

John Bovay, a native of Gainesville, Florida, experienced severe weather conditions that prompted cancellation of classes at the University of Florida.

Fellow Floridian, Katy Allen, is also no stranger to hurricanes.

Growing up in South Florida, she states that she



SAVE A HORSE, RIDE A SEA-DOO. In the wake of Hurricane Frances, the only feasible mode of transportation for many was a Sea-Doo. Frances dumped rain from Florida up the Eastern Seaboard.

has become accustomed to the storms. In fact, she says that the school system "had about 5 days set aside at the beginning of the school year as 'hurricane days.'"

Allen and 2.9 million other Florida residents were evacuated from their homes in preparation for

Hurricane Frances. Though her house was not hit, some of Allen's family members sustained severe damage.

Hurricane Frances has also impeded students' trips back to Washington and Lee. Allen and her family had to leave Florida much earlier than anticipated as a result of gasoline shortages.

Heavy traffic caused the trip to take much longer than usual.

Sophomore Hank Gates, a Richmond resident, returned to Lexington with his basement at home completely flooded.

August's Category 4 Hurricane Charley has officially claimed 25 lives and caused over 500 million dollars in damages.

Though the South Florida area seems to get hit every year, Allen reassures that though "it seems like a sad way to live, people are growing more cautious and aware of the problem every year, and they will rebuild...It's my home, it's what I'm used to."

South Floridians may have to wait for that rebuilding process. Category 5 Hurricane Ivan is currently battering the Caribbean Islands, and is expected to make landfall anywhere from Biloxi, Mississippi, to the Florida Keys on Wednesday.

W&L Bookstore Student Book of the Week *50 Things You're Not Supposed to Know* (by Russ Kick)

This is the ultimate guide to little-known truths that The Man doesn't want you to know. Read the unbelievable stories behind 50 little known controversies, scandals, and oddities.

For example, few people know...-

- *One of the Popes wrote an erotic book-
- *We came within minutes of a nuclear war with Russia in 1995-
- *Hitler's blood relatives are alive and well in New York state-
- *The Virginia colonists practiced cannibalism-
- *The Supreme Court has ruled that you are allowed to ingest any drug, especially if you are an addict.

Regular price: \$9.95 Book of the Week Price: \$7.96 (Also, pre-order the sequel, *50 Things You're Not Supposed to Know, Volume 2*, due in November, for 15% off this week)

Lime Kiln Theater presents award-winning Bluegrass musicians this fall

BY SARA DUCKWORTH
STAFF WRITER

The summer season for Lime Kiln is starting to wind down, but it ain't over till it's over. On September 17, Gillian Welch and The Old Crow Medicine Show will be performing. Welch, a Bluegrass singer, has received Grammy nominations for both her work on the *O Brother Where Art Thou?* Soundtrack and her record, *Time (The Revelator)*. Welch's newest record, *Soul Journey*, is her "sunniest record" to date, but even that has a heart felt longing to it.

Her openers, The Old Crow Medicine Show, are successful Bluegrass musicians as well. The story of how they were discovered is a fateful one, not only for the band but also for Lime Kiln. While the band was out playing in front of a pharmacy, a woman stopped to ask if they would be there for awhile because she wanted her father to hear them. Her father turned out to be the folk icon Doc Watson, who is the starting point for their careers and the next performer for the stage.

Doc Watson is the recipient of the National Medal of Arts, National Heritage Fellowship, and five Grammy Awards. Watson is a legendary performer who blends his traditional Appalachian musical roots with bluegrass, country, gospel, and blues to create a unique style with an expansive repertoire.

Tickets for Gillian Welch's show are \$22 reserved, \$18 lawn, and Doc Watson's are \$25 reserved, \$23 lawn. Tickets can be ordered at (540)463-3074.

The John W. Elrod Commons Movie Showings for Fall 2004

September

SHREK 2

Monday, September, 13 @ 9:30 p.m.
Tuesday & Thursday, September, 14 & 16 @ 9:30 p.m.

THE PASSION

Sunday, September, 19 @ 7:00 p.m.
Monday, September, 20 @ 7:00 p.m.

TROY

Tuesday & Thursday, September, 21 & 22 @ 9:30 p.m.

SPIDER-MAN 2

Monday, September, 27 @ 7:00 p.m.
Tuesday & Thursday, September, 28 & 30 @ 9:30 p.m.

October

HARRY POTTER & THE PRISONER OF AZKABAN

Monday, October, 4 @ 7:00 p.m.
Tuesday & Thursday, October, 5 & 7 @ 9:30 p.m.

THE TERMINAL

Tuesday & Thursday, October, 12 & 14 @ 9:30 p.m.

KING ARTHUR

Monday, October, 18 @ 7:00 p.m.
Tuesday & Thursday, October, 19 & 21 @ 9:30 p.m.

ANCHORMAN

Monday, October, 25 @ 7:00 p.m.
Tuesday & Thursday, October, 26 & 28 @ 9:30 p.m.

November

THE VILLAGE

Monday, November, 1 @ 7:00 p.m.
Tuesday, November, 2 @ 9:30 p.m.

BEFORE SUNSET

Thursday, November, 4 @ 9:30 p.m.
Sunday, November, 7 @ 7:00 p.m.

THE BOURNE SUPREMACY

Monday, November, 8 @ 7:00 p.m.
Tuesday & Thursday, November, 9 & 11 @ 9:30 p.m.

COLLATERAL

Monday, November, 15 @ 7:00 p.m.
Tuesday & Thursday, November, 16 & 18 @ 9:30 p.m.

THE MANCHURIAN CANDIDATE

Monday, November, 29 @ 7:00 p.m.
Tuesday, November, 30 @ 9:30 p.m.
Thursday, December, 2 @ 9:30 p.m.

Sponsored by the Elrod University Commons & Student Activities

Refreshments will be served at a reduced rate

Faculty, staff and students are given priority

Blue Ridge Auto Center

is now a ...



Blue Ridge Auto Center & Custom Muffler Centers have joined forces to bring you the best in Custom Designed Aluminized or Stainless Steel Exhaust Systems & Complete Original Replacement Systems.

"Lifetime" Limited or Entire System Warranties Available.

- ◆ VORTEX ◆ FLOWMASTER ◆ SUPREME DIESEL ◆ VOLT ◆ MUSTANG PERFORMANCE ◆
- ◆ ELIMINATOR TURBO ◆ METAL CAT ◆ CMX CONVERTER ◆

Grand Opening Specials
Good only for a limited time

Take \$20.00 Off Any Stainless Steel Muffler for Import Cars

Vortex Muffler, Aluminized Pipe & Chrome Tips Starting at \$195.95

Come Visit Us At ...
Blue Ridge Auto Center

1973 Magnolia Avenue - Buena Vista, VA 540-261-9377

Moderate drinking prevents heart disease and stroke.

According to the American Heart Association, men consuming two drinks per day and women consuming one have markedly lower rates of heart disease and stroke. The benefit is due to an increase in HDL, the "good" cholesterol, that results from alcohol intake. However, excessive drinking can lead to alcoholism, obesity, high blood pressure and breast cancer.

Check out the information @ www.americanheart.org.



THE LAST WORD

Potato Man suggests revamping campus traditions

We go to a school that is rich in tradition. One of the oldest schools in the country, W&L has seen everyone from Robert E Lee to Pat Green on its beautiful campus. The Honor System and Secret Societies such as the Cadavers continue the tradition of excellence at Washington and Lee.

While some people seem to hate change in our school, I on the other hand embrace it. To prove my point, I have decided to offer alternatives to our current traditions in order to spice up life a little at this wonderful institution.

First off, and most importantly, I will start with the Colonnade Club. For those of you freshmen who are unaware of the requirements to be a part of this club, it implies that you hookup with a member of the opposite sex in each and every building on the Colonnade.

While I'm sure being a member of this federation would have proven risqué in the olden days, times have changed, and it is time to up the ante so to speak. So the new requirement is that the person you hookup with has to be majoring in the same department as the building specializes. For instance, a history major in Newcomb, a Romance Languages major in Tucker, and so on and so forth.

What about Washington Hall you ask? Washington Hall is reserved for faculty. That's right my little love-

birds, in order to become a member of the new and improved Colonnade Club you must hook up with a faculty member. And just for the fun of it, we'll allow house mothers to count as faculty. That should make it a little easier.

The next tradition we shall alter is that of the Honor System. As we all know, the Honor System came under deep scrutiny last year for numerous reasons. So I offer a compromise between the EC and the student body. For one week a year, you are not allowed to tell the truth, do your own work, or anything else honorable.

Unlike most college students, all year we must abandon our lives as normal human savages, so I think we all deserve a week in which we get a release. If you do not abide by the "Dishonorable Code," you will be forced to undergo a ruthless EC trial with expulsion as the punishment.

That's right, no more lying to your girlfriend and telling her you love her (c'mon, we all know it's a lie. Plagiarism on every assignment. Anarchy, complete anarchy...it will be wonderful.

And there will be no more going to football games all dressed up. There will be no going to football games at all! Instead of putting on our pink Brooks Brothers tie and our monogrammed shirt, why don't we just keep the

clothes on from the night before and party more? Let's be honest. On Saturday morning when the game is about to start, no one actually wants to leave the Gin Bucket. So let's just stay and drink. It's not like we know who wins; everyone always leaves after the first half. So why should we even waste our time? Let's just pass the turkey baster around all morning long.

And the final item I will change is the Cadavers. The Cadavers are no more. I mean what is so exciting about them? They give a lot of money to the school and draw skulls on campus. Ooooo. Scary.

So instead of the Cadavers, we are going to replace them with a real secret society. It's going to be called the Marshalls. The only people that are allowed into my club, are those named Marshall who are from Idaho. That should keep the rest of you losers out.

Wait I take that back, I will allow a select amount freshman girls in. But that'll be it, and trust me we'll do a lot more fun things than playing with chalk.

And there you have it. I am going to change this school for the better. These traditions have worn out their welcome at W&L, and it's time to make some changes. Out with the old and in with the new.

P.S. If a member of the faculty is reading this, meet me at Washington Hall at midnight.

Φ POTATO MAN
MARSHALL RULE

Kickin' Wing

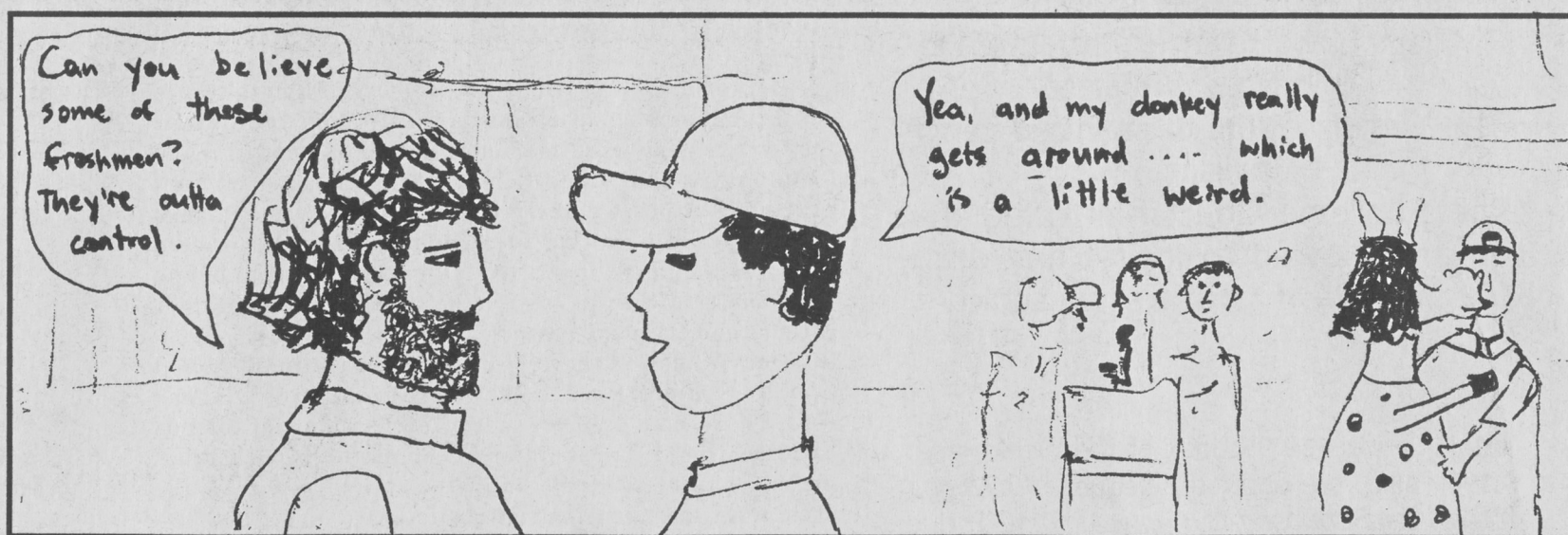
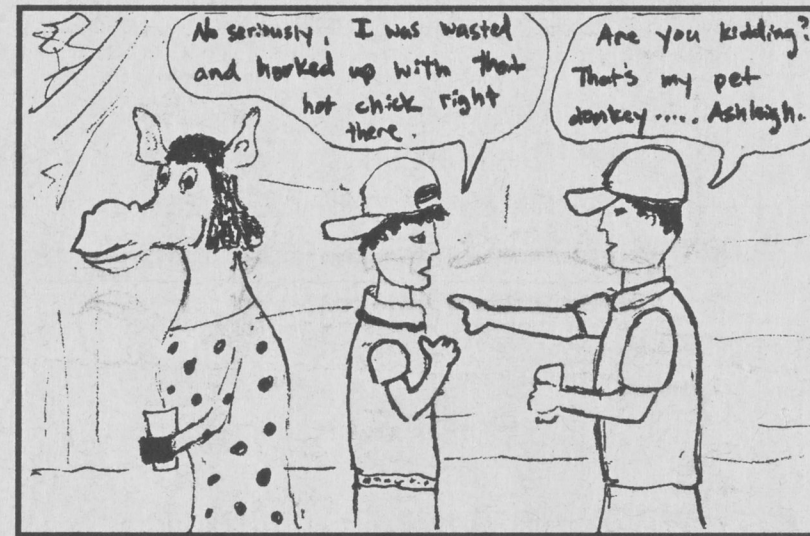
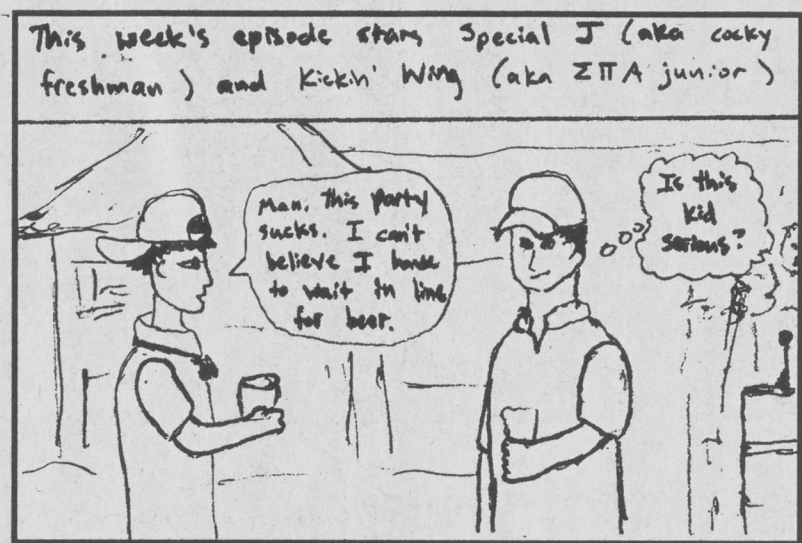
By:

David Seifert

Mark Grobmyer

and

Stephen Lipscomb



QUICK HITS

Φ Wow, The Wheeler Sparks, Dan Fassio, Pete Jones, Jared Meyer Band is talented and attractive.

Φ Stupidest words of the week, heard on Traveller dispatch: "Good, if that car's not here in 10 minutes, I'm gonna drive home drunk, I've got my keys in my hand."

Φ Remember kids, body language is important in Velasquez's class.

Φ Sober drivers who park briefly near County Seat will be fined \$76. Great message to all the sober drivers out there.

Φ What was up with the last edition of *The Trident*? Why were there no words on the front page?

Φ I just wanted to make the faculty aware that we take 4 classes, not 1.

Φ Jeb Brooks has broken his toe. Send him flowers or painkillers- your choice.

Φ Dean Leonard: the ultimate authority when you need permission to go on a date.

Φ Who isn't excited about the new Traveller bus?

Φ Rest easy this evening: Brett Kirwan is in the Navy, bravely defending our country.

Φ Why do boys throw parties and not have toilet paper?

Φ Congratulations to the new members of the Riding team- Beat Hollins!

Φ Will they ever put up the goalposts on the football field?

Φ How much time has Marshall Rule spent in the gym this week?

Φ Happy 24th Birthday to our favorite *Boy Meets World* actor, Ben Savage.

Φ As of today, *Beverly Hills 90210* will no longer be airing in syndication on FX. Tragic.

Φ What's up with the aqua doors? Mrs. Lee must be rolling in her grave.

Φ Susan Summers does not equal Susan Somers.

Φ Why do wet towels not dry in Woods Creek?

Φ I saw Walker Humphrey last night, and he had a Southern accent. Impressive.

Φ Are we having Buffalo Creek this year?

Φ Who wears heels to a country party? They sink! Definitely not the way to impress upperclass girls.

Φ Does anyone else have difficulty sleeping after they've been drinking? This business of waking up at 7am is no good.

Φ Jessica Simpson is my fashion role model.

Φ While we're on the subject, Ashlee Simpson is a much better singer than her sister.

Φ Can Usher make a music video in which he does not strip?

Φ Is inhalable alcohol a good idea?

Φ Is your vehicle on the list of most-stolen vehicles?

Φ Vent your anger. It will make you feel better, ladies.

Φ Survey: do you prefer XM or Sirius satellite radio?

Φ Yesterday was National Grandparents Day. What did you do about it?

Φ More on Grandparents Day- it was founded in West Virginia.

Φ Saturday's Tim McGraw concert in Roanoke was awesome.

Φ Helen Hughes subscribes to the Phi. You should too.

Φ W&L hired another new vice president? What does this one do now, other than raise our tuition?

Φ Go see Second City comedy troupe at the Lenfest Center on Wednesday. They're really funny.

Φ E-mail your anonymous Quick Hits to phi@wlu.edu.