

ARCH.
ARCH.
378.755
R552
1998/99
V. 101
no. 1
C-2

Opinion & Editorial

PAGE 2 SEPTEMBER 14, 1998

"Well sorry, that's nuthin'... I walked 90 miles to class every day when I was young!"

"How young, daddy?"

"Almost 21."

Well it's time to feel like school children once again. Not because we're back in the saddle of educational fun, but because we get to walk to school like 6th graders.

"Hey y'all, wait up," we get to yell every morning as we see our off-campus friends at every corner taking the same half-mile trek up-hill to campus. Too bad for us, we can't take the bus or have our moms bring us because school buses don't exist for us and Baner would probably tow our moms' cars away if they tried.

It's fine now, but just wait until winter when we get to leave our sport utility vehicles behind and strap on the old snow shoes. Can't wait.

Seriously though, the new parking rules are ridiculous. How hard is it to make a parking lot? Is a three month summer not enough to lay some stones? Things might be done a bit more slowly in the South than other places, but get real. Let's put the pedal to the metal before lot rage begins.

It is not our problem that there are not enough spots in which to park. Administrators may say we lost that right by moving off campus. Nice scapegoat. Where else are we going to live? It's not as if there is ample dorm space.

Yeah, we're probably lazy. Spoiled brats, perhaps, but you can't let us regress in parking lot maturity. We've waited for those close lots and now we've been thrown out to where we were as freshmen.

Only two good things can be said about this situation. First, we'll really be able to tell those cliched exaggerations of walking-to-school hell to our children someday. Second, we might get tighter buns from the eternal up-hill climb.

Have an opinion?
Let us know.

e-mail us at phi@wlu.edu or
call at (540) 462-4060

The Ring-tum Phi

Executive Editors: Tarah Grant, Hollister Hovey
Copy Editor: Sarah Meldrum, Meredith Mlynar
News Editors: Polly Doig, John Stewart
w&life Editors: Ginger Phillips, Erica Prosser, Stephen Pesce
Opinion & Editorial Editor: Frances Groberg
Sports Editors: Brendan Harrington
Last Word Editor: Kevin McManemin
Photo Editor: Mike Crittenden, Christie Phillips
Online Editor: Tom Wadlow
Layout Assistant: Stephanie Bianco
Business Manager: Jill Jamieson
Managing Editor: Jason Williams

The Ring-tum Phi is published Mondays during the undergraduate school year at Washington and Lee University, Lexington, VA. Funding for The Ring-tum Phi comes primarily from advertising and subscription revenues. The Washington and Lee Publications Board elects the Executive Editor and Business Manager, but The Ring-tum Phi is otherwise independent.

The Ring-tum Phi welcomes all responsible submissions and letters. All submissions must be in the Phi office, room 208 of the University Center, by noon on Saturday to appear in that week's edition. The Ring-tum Phi reserves the right to edit submissions for content and length. Letters, columns and "Talkback" do not reflect the opinion of The Ring-tum Phi Editorial Board. Advertising does not reflect the opinions of The Ring-tum Phi or its staff. This newspaper observes current court definitions of libel and obscenity.

The Ring-tum Phi
208 University Center
Washington and Lee University
Lexington, VA 24450
Telephone: (540) 462-4060
Fax: (540) 462-4059
E-mail: phi@wlu.edu
<http://wlu.edu/~phi>



W&L students need some laughs

At 4 this morning after I played the last of the 32,000 Free Cell games available on my computer, I cruised the web for a while and happened upon the Comedy Central web site. My blood-shot eyes brightened as I read something that truly struck my fancy: "What?! Your neighborhood doesn't get Comedy Central? Are you forced to entertain yourself with 'Baywatch Nights,' endless games of computer solitaire and the Ziggy comic strip in your daily newspaper?"

After crying at the realization that my life is pathetic, I seriously questioned why our local cable service deprives a fun-loving college community of one of the most popular television stations among college-aged viewers.

Before settling back down at Washington and Lee, I visited a friend at Duke University. This friend had started classes already; since I knew no one else, Comedy Central proved a truly reliable friend and gracious host. Ben Stein challenged and stimulated my sun-dried gray matter. Craig Kilborn and the "Daily Show" team kept me current on events around the world. And those wacky Europeans with "Viva Variety" made me proud to be an American.

Watching television at Duke proved extremely informative and entertaining. W&L and the city of Lexington provide students with a college experience in the classroom, in the community and in the social arena equal to few others. Why should students not demand the same dedication to excellence out of their cable television service?

Maybe if enough students voiced disappointment to the local cable company about this terrible oversight in channel lineup, Comedy Central might finally reach a community that suffers from its absence.

On a different note, Duke also gets CBC (Canadian Broadcasting Company). Though I do not think that students should necessarily fight for this station, I did discover that Sprint Canada offers a set \$20 per month long distance rate for calls anywhere in Canada — what a tasty treat that would be if offered in the U.S. (We would not, however, welcome the satirized Eviata-style commercials starring Candice Bergen.) So maybe after calling the cable company, a call to the telephone company might satisfy the activist in everyone.

Off His Rocker
Stephen Pesce '01



Letters to the student body

Dean Dalhouse thanks those involved in Freshman Orientation

Dear Editor:

I would like to take this opportunity to thank publicly the entire Washington and Lee community for providing such an enthusiastic welcome to the Class of 2002 during the Freshman Orientation program.

Of particular importance was the work of the Freshman Orientation Committee, and its extraordinary chairman, Charles Leddy; the unflinchingly dedicated committee chairmen: Stephanie Wolfe, Amy Kane, Elizabeth Watkins, Veronica Langhofer, Katie Hudson, Adam Hagsfor, Taylor Beaupain and Patrick McCormack; Owen Barker; the Dormitory Counselors; the Small Group Leaders; the Big Brothers and Big Sisters; and Mrs. Bonnie Walker, whose behind-the-scenes work made much of orientation possible. All of these people gave unflinchingly of themselves, planning and organizing orientation activities and staffing virtually every orientation event — from Casino Night to airport shuttles.

Thanks also go to: our Physical Plant staff; Mr. John Taffe and Food Services who furnished the culinary touches for several meetings and special occasions; Jim Farrar, Rob Mish, Kathekon, Southern Comfort, Jubilee, General Admission and Gordon Spice for the Alumni Association BBQ; Project Safe and Sound; Habitat for Humanity and APO Service Fraternity for excellent leadership of the community service activities; Beth Formidoni and the Executive Committee for such a meaningful orientation to the Honor System. Others too numerous to mention also contributed

to the Freshman Orientation program, and this general nod must suffice as a thank you. I am pleased that the Class of 2002 was the beneficiary of such a community effort!

Sincerely,
Mark T. Dalhouse
Dean of Freshmen

Shaw expresses thanks for a great Convocation

Dear Editor:

On behalf of the Commission on the 250th Observance I'd like to extend thanks and deep appreciation to all students, faculty and administration who participated in the Fall Convocation and 250th Kickoff. Your presence helped create a memorable event to begin this special year in the life of the University. We hope everyone will participate in all the events associated with the 250th Observance and the 150th anniversary of the founding of the law school.

Sincerely,
Brian Shaw
Executive Director
250th Observance

Woods Creek keeps students in the dark

As I marveled at the freshman day move-in last Saturday, I had to smile. This year, there were no stairs to climb, no cinderblocks to struggle with, and no unfamiliar faces to meet. No, this year I'm a sophomore, living on the entry floor of the Woods Creek apartments. I have a common room, a kitchen to cook in, and a sink in which to dump my dirty dishes.

But the benefits of living in Woods Creek as a sophomore girl may not be worth the risks. Being on the entry floor on the front side, our balcony is easy to climb, thus providing entry to anyone not possessing a university card. This is wonderful if for some reason you simply forget your card. But what about all of those crazy people this very paper reported on last year? Peeping Toms, flashers and all sorts of other high-society persons tend to hang out in the paths leading from campus to the complex. Just the other day, while walking on the gravel path from behind the gym, I spotted a man crouched amongst the trees, as if he were trying to hide. He certainly didn't participate in the speaking tradition, and I didn't stop to ask him why.

Part of the reason Woods Creek is prone to these types of figures is the severe lack of sufficient lighting lining the paths. This school is willing to spend enormous amounts of money for grand new entrances and blue banners with uplifting messages, but not to effectively provide for the safety of its students.

The Woods Creek apartments are a wonderful place to live. They are removed from campus, yet close enough to walk to class in under 10 minutes. Once the sun goes down, however, it becomes a place that isn't too safe to walk to and from alone. So all of you freshmen who are complaining just as I did last year about the noise and the limited space of the dorms, realize that what you may give up in comfort you gain in safety.

My View
Frances Groberg '02

Quote of the week: Why did Clinton pull out?

— Student wondering why Clinton did not speak at Fall Convocation

Media breaches honor system

As a freshman, I have been hearing a great deal about the importance of honor during my first week here. Honor is one of the most important virtues for human beings in a civilized society. But while honor is so revered here on campus, our national discourse as a whole is sorely lacking in this vital quality.

The collective national attention has been focused on President Clinton's affair with Monica Lewinsky for the past seven-and-a-half months. This issue raises serious questions about the standing of honor in our society. Perhaps the question should be asked: What is the most egregious breach of honor — President Clinton's proclivities, or our incessant appetite for every grisly detail?

There is absolutely no question as to whether or not the actions of the President were dishonorable. He caused great harm to his family, and he demonstrated severe lack of judgment in engaging in this affair. The truly disgraceful aspect of the situation is, however, the absolute fervor that the news media have shown for disclosing every intimate detail. Even though he is the President, he is a human being entitled to the privacy necessary to heal wounds in his marriage and his family. The media have not granted him this basic human right to carry on a family life independent of the public eye.

The national discourse over the past seven months has been anything but honorable. In such a voyeuristic society, the private lives of our public figures are subject to total scrutiny from all angles. Even when our leaders make mistakes, they still deserve the opportunity to make reparations and amends.

So the ultimate question remains: Which is the greater transgression — the deed itself, or the way society received the deed? One only needs to watch the news or read any newspaper, and the answer reveals itself. Perhaps before we judge the actions of our leader as a society, we should judge ourselves by the same standard.

Blows Against the Empire
—Tara McCook '02



TALKback: What is the worst pick-up line you've heard?



"I lost my phone number. Can I have yours?"
—Christa Hemmings '02



"Do you have any Italian in you?"
"No."
"Do you want some?"
—Summers Kimbrough '02



"Hello, my name is Neil. You'll remember it: it's a verb."
—Deidra MacLeod '02

Lexington, VA: getting from point A to point B

Lexington

MAP OF
LEXINGTON,
VIRGINIA

MAP ART BY
ERICA PROSSER

TO RT 11, I-64,
I-81, WAL-MART,
AUNT SARAH'S, MAPLE
HALL, BOWLING,
DRIVE-IN, LEE-HI

← TO I-64

TO NATURAL BRIDGE,
I-81, ROANOKE,
RT 11

TO BV, I-81,
HARRIS TEETER,
FOOD LION,
MCDONALD'S,
WENDY'S,
SUBWAY, TACO
BELL, ETC.

Freshmen, transfer students and other miscellaneous newcomers: Is this your first year in the thriving metropolis of Lexington, Va.? Are you just a tad confused about where everything is and how to get to the important spots? Worry no more. Just use this handy map and key to get yourself around Big Lex with ease. Before long, you'll be so comfortable with the area that people might mistake you for a townie.

- A. Beta Theta Pi (Beta)
- B. Lambda Chi Alpha (Lambda Chi)
- C. Kappa Alpha (KA)
- D. Kappa Sigma (Kappa Sig)
- E. Pi Kappa Alpha (Pika)
- F. Pi Kappa Phi (Pi Phi)
- G. Sigma Alpha Epsilon (SAE)
- H. Sigma Nu
- I. Sigma Phi Epsilon (Sig Ep)
- J. Sigma Chi
- K. Phi Gamma Delta (Fiji)
- L. Phi Delta Theta (Phi Delt)

- M. Phi Kappa Sigma (Phi Kap)
- N. Phi Kappa Psi (Phi Psi)
- O. Chi Psi
- P. The Palms
- Q. Spanky's
- R. Sheridan Livery Inn
- S. Willson Walker House
- T. Il Palazzo
- U. Domino's Pizza
- V. Harb's
- W. Salerno's
- X. Southern Inn
- Y. University Cleaners
- Z. Troubadour Theatre
- 1. State Theater
- 2. Pappagallo
- 3. Night Owl
- 4. Crossroads
- 5. Hallmark
- 6. Alvin-Dennis
- 7. University Sportswear

- 8. U.S. Post Office
- 9. First Union Bank
- 10. Crestar Bank
- 11. Lexington Coffee Roasting Co.
- 12. Sunday's Child
- 13. Bradshaw's Studio — 1-hour Photo
- 14. Stonewall Jackson Cemetery
- 15. Munster
- 16. The Bestseller bookstore

If your destination is slightly off the map, check out these directions.

Directions to Goshen: Take Main Street toward Wal-Mart®, but turn left on Route 39 (the spotlight right before Wal-Mart®). Stay on 39, and the popular Goshen picnic spot along the river will eventually appear on the right.

Directions to Zollman's: Take Route 11 south to Route 251 (Thornhill Road). Turn right on 251 and go south, keeping on 251 past Union Run Road. Past the country club and the Moose Lodge, turn left on Zollman's

Mill Road and stay on it until you reach Zollman's (look for all the other cars full of fellow students having fun).

Directions to Charlottesville: Take Interstate 64 east for 63 miles until it crosses U.S. 29. Go east on U.S. 29 almost 3 miles until it crosses U.S. 250. Take U.S. 250 east for a mile straight into Charlottesville.

Directions to the Roanoke Airport and Mall: Take Nelson (Route 60) toward Harris Teeter and stay on Nelson until it crosses Interstate 81. Go south on 81 for about an hour until the Roanoke exit appears (it is a left exit onto Interstate 581). Follow the signs to the airport. For those interested in visiting Valley View Mall, stay on I-581 to the second Hershberger Road exit and follow the signs.

General directions to Washington, D.C.: Take Interstate 81 northeast for about 110 miles until it intersects Interstate 66. Take I-66 east for about 73 miles right into Washington, D.C. More maps for the D.C. area can be found online at www.mindspring.com/~chadallen/dc/layers/.

—compiled from staff research

Celebration Calendar

| | |
|--------------|--|
| September 9 | Fall Convocation "Come Cheer: W&L at 250 Years" photo exhibit, duPont Gallery |
| October 1-3 | Homecoming Weekend |
| October 3 | Lee Chapel Rededication |
| October 10 | Law School 150 th Gala |
| October 17 | Mt. Vernon Ceremony |
| October 22 | "Telling Memories: Women at Washington & Lee" exhibit, Lenfest lobby |
| November 5-8 | Center for Academic Integrity Conference |
| November 10 | Order of the Coif Lecture |
| November 14 | Bicinquagenary Ball |
| January 19 | Founder's Day |
| February 11 | 250 th Postal Card Ceremony |
| February 13 | Jack Warner '40 exhibit, Lenfest lobby |
| March 3 | Fancy Dress Ball |
| April 29 | Alumni Reunion Weekend |

—compiled from staff reports

A walk down Memory Lane

By GINGER PHILLIPS

By FEATURES EDITOR

The reminders are everywhere. The vibrant, blue banners adorn the Colonnade and the streets of Lexington. Then there is that unique logo that can be seen on anything from keychains to the senior class rings. The University's master calendar is filled with special events, including an elaborate ball in November. It is obvious that something really big is happening around campus as Washington and Lee University officially begins the celebration of its 250-year history.

Perhaps, like many others, you are in awe of this great accomplishment and proud to be a part of the nation's sixth oldest university. Maybe you've tried to imagine the W&L of past times — its students, faculty and physical appearance.

"I've often wondered what it would have been like to be a student here during some other time period," sophomore Emily Barnes said. "So much has happened in the history of our country, and W&L has seen it all."

W&L's life has certainly encompassed countless faces and ideas, changing fashion trends and world events, and a myriad of wonderful, personal stories. All of these aspects of the University are chronicled in the 250th anniversary commemorative book "Come Cheer for Washington and Lee: The University at 250 Years."

Numerous individuals, all of whom were committed to giving a piece of W&L's past to those who will determine its future, conceived the idea for this book.

"This 250th Observance is surely a time to look back and

be proud," editor Mame Warren writes. "It is also a time to focus on the brilliant future of this great institution."

The pages of this book are graced with the memories, historical reflections and personal anecdotes of some of the many professors, alumni and visitors whose lives have been affected by W&L.

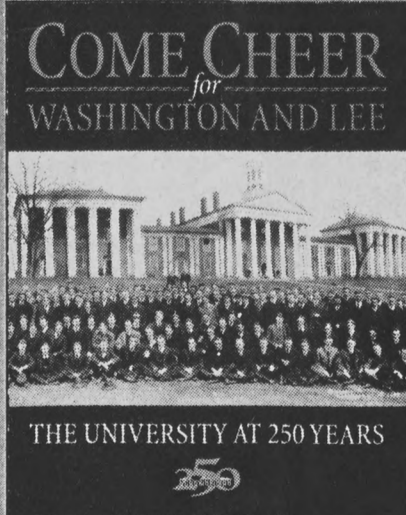
This celebratory chronicle contains more than just words. It is filled with more than 400 beautiful photographs that bring these stories and the people who made them to life.

"There is so much history behind this beautiful campus and its buildings," sophomore Deena Johnson said. "I think that's something that most students take for granted every day, but once you look at these photos, you begin to truly realize and feel what has really taken place here throughout the years."

While this book portrays and examines the changes that W&L has undergone, it also focuses on those timeless and unchanging principles on which W&L was founded.

"Honor. Civility. Community. You've heard it a thousand times, and yet, particularly now, it cannot be repeated often enough," Laurent Boetsch, Dean of the College and a 1969 alum, writes. "To say this again and again is not to repeat a cliché. This is the substance of W&L..."

The large format, hardcover edition of "Come Cheer for Washington and Lee" can be purchased in the University Bookstore or by special order form on the Washington and Lee internet site. The book costs \$45.00, but the experience and knowledge gained from reading it are truly invaluable.



Did you know?

☐ Wilson Field was once used as a military training site for students during World War I.

☐ The original Tucker Hall was a stone structure that looked much different from the other brick buildings along the Colonnade. Tucker Hall, which was once home to the Law School, burned in December of 1934. The new Tucker Hall was built in 1936 as a companion to Newcomb Hall.

☐ W&L has attracted such celebrities as President Jimmy Carter, Speaker of the House Newt Gingrich, author William Faulkner, actress Elizabeth Taylor and musician Winton Marsalis to the campus.

☐ Scenes from the 1992 film "Somersby," starring Richard Gere and Jodie Foster, were filmed in Lexington. Cast members had dressing rooms located in Red Square fraternity houses.

☐ University librarian Annie Jo White hosted the first official Fancy Dress Ball in 1907. The event has since become known as the collegiate social event of the South.

☐ From 1931 until 1969, freshmen were first sent to Freshmen Camp in Natural Bridge before moving onto campus.

☐ Soldiers used Phi Kappa Sigma and other fraternity houses in Red Square were used as military barracks during WWI.

☐ Newcomb Hall once lacked the University's trademark white columns, and the C-School formerly maintained a large dome when it was known as the Carnegie Library.

—compiled from staff reports

Generals lose 14th straight opener

Johns Hopkins scores 29 points in second quarter offensive explosion

By **BRENDAN HARRINGTON**
SPORTS EDITOR

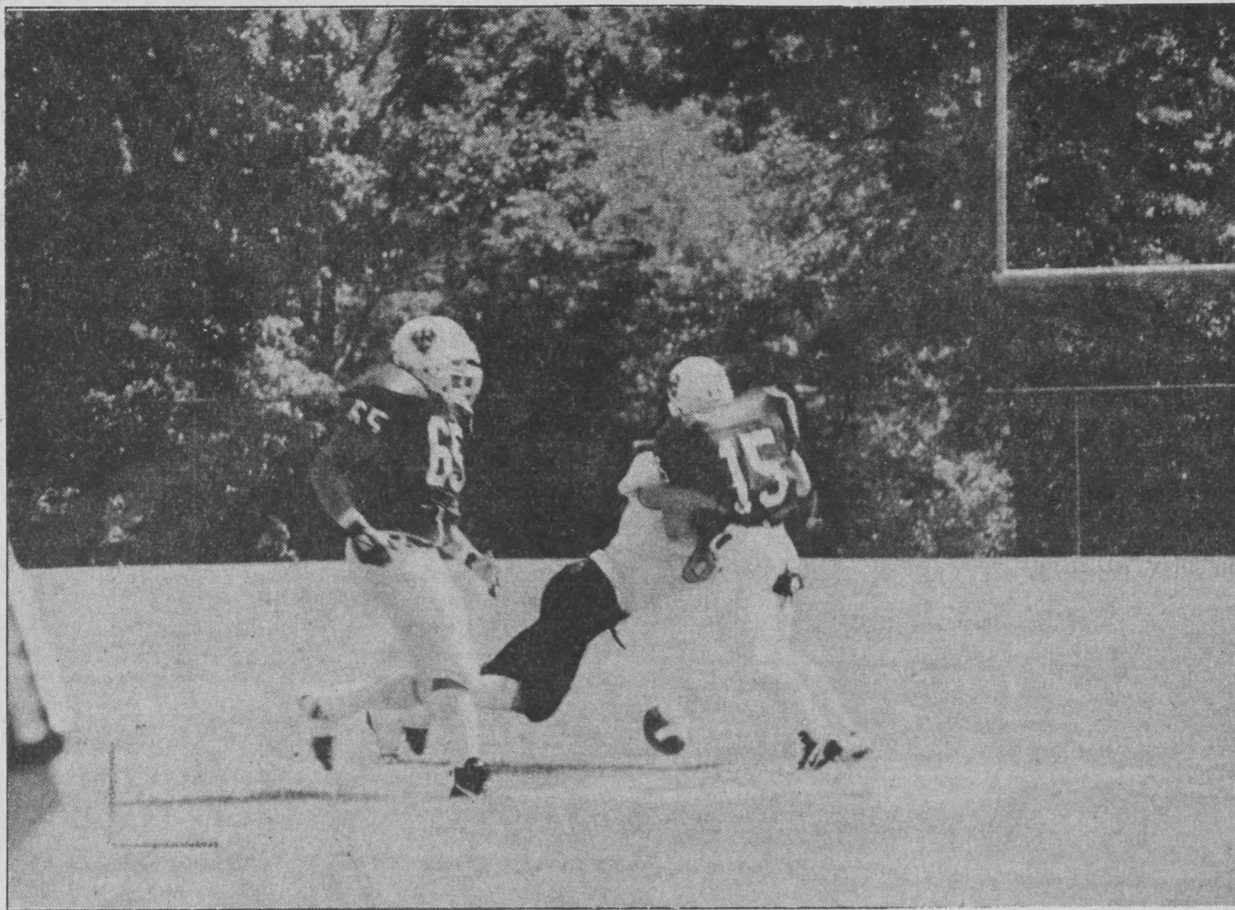
The Washington and Lee football squad kicked off their 1998 campaign exactly like they started their past 13 - with a loss. Saturday afternoon marked the 14th consecutive year that the Generals dropped the season opener, as Johns Hopkins scored 29 second quarter points en route to an impressive 43-23 win Saturday afternoon at Wilson Field. The Blue Jays also beat the Generals on opening day of last season, 34-28 in Baltimore.

The Generals knew they would have to stop the run to be successful against the Blue Jays, but they just could not contain the Hopkins running attack. The Blue Jays rushed for 192 yards on 43 carries, an average of 4.5 yards per carry.

Six different Hopkins players rushed for 20 or more yards, led by Donald Davis. The Blue Jays' passing attack also succeeded as quarterbacks Wayne Roccia and Jamie Monica were a combined 19-26 for 262 yards, two touchdowns, and no interceptions.

"I think the team had a great effort, but we just had some breakdowns," defensive lineman Ben Middendorf commented following the game. "I think we can correct those mistakes and come back to have a good season."

Turnovers were the downfall of the W&L offense, as the Generals committed three turnovers in the first half, including two crucial in-



A JOHN HOPKINS PLAYER tackles sophomore running back Marc Watson, causing him to fumble the ball. The Generals turned the ball over three times in the first half of the 43-23 loss to the Blue Jays. **HOLLISTER HOVEY/EXECUTIVE EDITOR**

terceptions by junior quarterback Christian Batcheller. Other than the two interceptions, Batcheller had a solid performance as he went 19-28 for 230 yards and two touchdowns.

"There were a few bad reads on my part," Batcheller admitted. "Other than that we moved the ball pretty well. A few bad mental decisions were basically the difference in the game."

Junior wide receiver J.T. Malatesta was one of the few bright spots for the Generals as he caught eight passes for 124 yards and made a difficult diving touchdown catch in the fourth quarter.

The Generals led 3-0 after the first quarter, but just seven seconds into the second quarter Roccia threw a six yard touchdown pass to

Justin Bellochio to give the Blue Jays a 6-3 lead. Immediately following the kickoff, Craig Reinert intercepted an underthrown pass from Christian Batcheller and ran it all the way back to the one yard line.

Sophomore running back Scott Martorana punched it in a play later to give the Blue Jays their second touchdown in the first 37 seconds of the quarter.

Hopkins struck again with 5:35 left in the second quarter when Roccia connected with wide receiver Sam Skinner for a 40-yard touchdown pass to give Johns Hopkins a commanding 21-3 lead.

Senior wide out Chas Chastain scampered 30 yards for a touchdown off a reverse with 2:58 left in

the first half, but Hopkins drove 80 yards and took a 29-10 lead into the locker room following a Davis three-yard run and successful two point conversion.

The Blue Jays continued to run the ball well in the second half as Donald Davis added two more touchdowns. Batcheller threw two touchdown passes in the fourth quarter, a 20 yarder to Malatesta and a seven yarder to sophomore Hanley Sayers, but it was too little too late.

"You hate to write it off to being the first game of the season because obviously you want to win your first game," Batcheller said. "But we just have to come out next week and do better."

Women's soccer still kicking

W&L outshoots RMWC 40-1 in season opener

By **FRANCES GROBERG**
SPORTS EDITOR

The long summer break has not affected the Washington and Lee women's soccer team in the least. Instead, the team has picked up from where it ended last season.

On Saturday, the team cruised to an easy 5-0 victory over Randolph Macon Women's College, and outshot its opponent 40-1.

"It was a good opener for us, even though I wouldn't have minded a little more competition," coach Jan Hathorn said. "It helped us gain early confidence."

Sophomore midfielder Shana Levine opened the Generals' season with two first half goals. The first came off an assist from senior co-captain Karin Treese, who passed through a defender to give Levine the open shot.

Levine shot the second from inside the six yard line into the corner of the net.

Treese, W&L's all time leading goal scorer, sophomore midfielder Courtney Nolan, and sophomore forward Amanda McDermott all added second half goals. Sophomore Lauren Hartsis and junior Stephanie McKnight shared the shutout in goal.

Treese has high hopes for this year's team. "We have lots of returning players, and the freshmen are doing well. Strong team unity

has also been a key factor."

Coach Hathorn also seems to be pleased with the way the team is shaping up. "Last year's leaders have really helped to start this year where we ended last year."

"Pre-season went well, without any major injuries, and the team is about where I would expect them to be at this point."

The Generals have a lot to live up to this year. Last season, the team went ten games before recording a loss, and finished with an impressive 14-2 record.

Treese led the Generals in goals (23), assists (5) and total points (51) last season. Treese also plays basketball and lacrosse for W&L.

Eight starters and 17 letter winners return to this year's team, including four first-team All-ODAC selections and one second team selection. Seven new freshman will also add to the depth of the team.

Among others cited by Hathorn as impact players are a couple of juniors and a great number of sophomores who had tremendous campaigns last season. They will be looked upon to provide solid play with most entering just their second seasons of collegiate eligibility. Collectively, this group accounted for 30 percent of the team's scoring.

"Our first goal is to host the ODAC tournament," said Treese. "Then, of course, we'd like to win it."

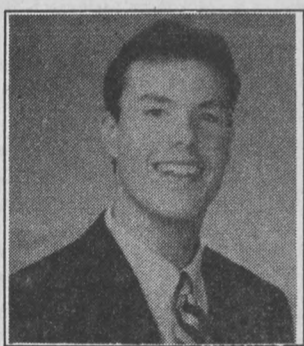
The team's home opener against Hollins will be held on Thursday, 4:00 p.m., at the Liberty Hall Fields.

Chase becomes all-time scorer for men's soccer

Record-breaking day helps Generals to 1-0 start in season opener

By **FRANCES GROBERG**
SPORTS EDITOR

The season could not have started off better for the men's soccer team. On Saturday, senior Sam



Chase

Chase became the program's all-time leading scorer, and the Generals posted a 4-1 victory over Catholic University.

"It was a really good start for us," senior co-captain and 1996 All-American Mikel Parker said. "We were also so excited for Sam. It was a great day."

Last year, Chase broke the record for most career points in the men's soccer program with 90.

Chase's goal gave the team an early 1-0 lead. Chase also added a second half goal, bringing his all-time total to 42.

"I should have done it last year, but it was really cool to have been able to do it with my parents on the sidelines," Chase said.

Junior midfielder Jamie Parker and freshman defender Rick Schnatz added second half goals.

This year's squad has high hopes. The Generals are anchored by 17 returning players, including 11 starters, as well as nine promising freshmen.

The defense will be led by se-

nior co-captain and 1996 All-American Mikel Parker. Sophomore Yacek Mucha returns to team with Parker on a defense that allowed only 1.34 goals per game last season.

The big key to this team, as is to any soccer team, will be the goalkeeper. Senior co-captain E.J. Murphy will represent the Generals in that role for the second consecutive season.

Last year, Murphy saved 100 of 123 shots and had a stellar 1.41 goals against average. He also became the first General since 1992 to start every game in goal during a full season.

Murphy will be backed up by sophomore Jordan Ginsberg and newcomer sophomore Evan Cramer.

"It's the best team I've played on yet," Chase said.

Mikel Parker agreed, saying "It looks like Coach Piranian got a great recruiting class. We've got great depth

this year, which will really help late in the season."

Competition will not only be fierce on the field, but between players for starting positions.

Other top returnees to the team include Sophomore Jon Wilson, who started all 17 games last season, and also figures to be a key in the offensive attack.

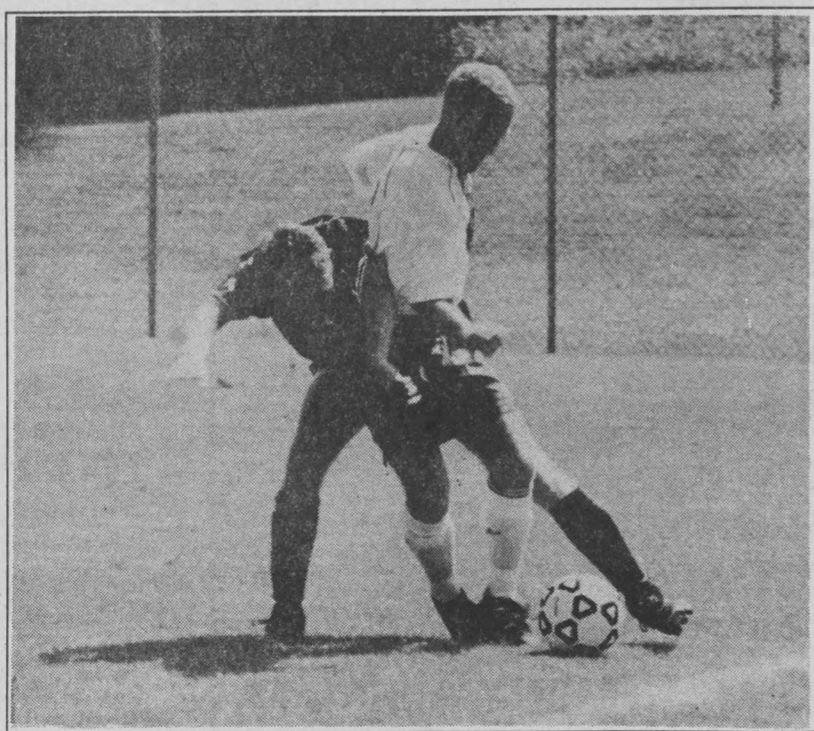
Wilson moves to the forward position after playing midfield last season. Junior Ben Thompson is expected to start alongside Parker in the midfield.

The team's season continues on Saturday at noon, when they will take on rival Virginia Wesleyan at the Liberty Hall Fields. The game promises to be a tough one, as the Generals try to avenge their semifinal loss in last year's ODAC tournament against the Marlins.

"We've got great depth this year, which will really help late in the season."

— **Mikel Parker**

"



JUNIOR MICHAEL KACZKA fights off a defender in the Generals' 4-1 victory over Catholic University. **HOLLISTER HOVEY/EXECUTIVE EDITOR**

Volleyball digs up first win at home tournament

Youth, experience the perfect combination in W&L invitational tournament

By **STEELE COOPER**
STAFF WRITER

The 1998 Generals volleyball team started the season off with an impressive win in this year's Washington and Lee Invitational Volleyball Tournament. On Friday, the Generals trounced Southern Virginia 3-0, but dropped a tough match to Sewanee 2-3. On Saturday, W&L dropped only two games the entire day in wins over Catholic (3-2), and two over North Carolina Wesleyan (3-0, 3-0).

Assistant coach Ana Litton attributed this weekend's success to "a good mix of experienced returners and a good talented group of freshmen."

Digs from senior co-captain Megan Snodgrass, setting from senior co-captain Lee Ann Gschwind, and smart hitting from junior power hitter Nancy Reinhart completed the pass-set-hit combo.

Reinhart heads the returnees and

brings with her the banner of being named the ODAC Player of the Year last year. The fiery competitor set a school record with 381 kills last season and also led the team with 327 digs. Reinhart has been a starter her first two seasons and is an explosive hitter despite standing just 5-foot-6.

Sophomore Tori Hayes came off of the bench on Saturday and provided a much needed spark for W&L after their Friday night loss to Sewanee.

Gschwind was impressed with the weekend's efforts, but was still reserved about making any predictions

"We proved a lot by pulling through some tough games, but we still have a lot of work to do."

— **Lee Ann Gschwind**

about this year's success. "We proved a lot by pulling through some tough games, but we still have a lot of work to do. The potential is definitely there."

This season, the Generals face the hard task of replacing last year's tal-

ented senior class. Over the last four seasons W&L has compiled a record of 96-27, capturing Old Dominion Athletic Conference championships in 1995 and 1997, while achieving the program's first regional ranking in 1996. However, the Generals have lost career kill leader Hilary Martin, career assist leader Alison Beard and career serve leader Holly Thomsen.

Several of the ever-changing starting positions this weekend belonged to freshmen that have brought talent and height to the team this year.

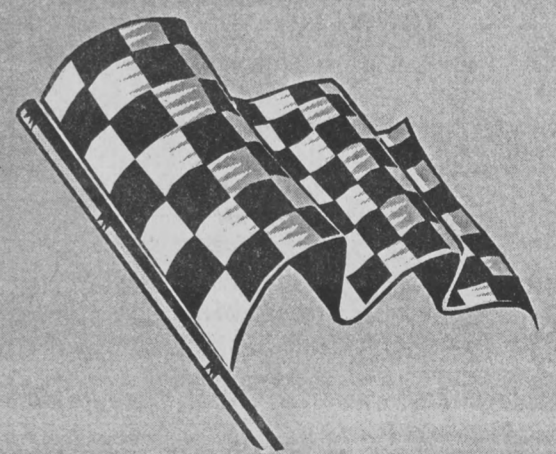
"The majority of the freshman are 5'11" or taller," said Erin Gwara, freshman middle blocker from Farmington, NY.

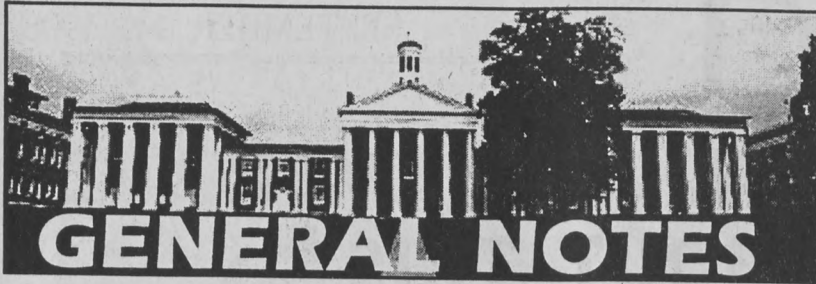
Solid team play wrapped up the win on Saturday for the Generals. This experience for the freshmen coupled with the experience of being the defending ODAC champions promises to lead to a winning season for W&L volleyball in 1998.

W&L faces Guilford on Tuesday Night at 6:30 p.m. in the Warner Center. Between the second and third games the team will hold a serving contest for the fans. Prizes from Lexington area merchants will be given away to the winners.

AT THE FINISH LINE

| Volleyball | | Football | |
|-----------------------|---|------------|----|
| W&L | 3 | W&L | 23 |
| So. Virginia | 0 | J. Hopkins | 43 |
| Men's Soccer | | | |
| W&L | 2 | W&L | 4 |
| Sewanee | 3 | Catholic | 1 |
| Women's Soccer | | | |
| W&L | 3 | W&L | 5 |
| NC Wesleyan | 0 | RMWC | 0 |





RESPONSIBILITY LECTURE SERIES STARTS

University of Chicago Professor Ralph Lerner will inaugurate a lecture series on civil responsibility with his talk "The American Founders and Responsibility" on Thursday. The responsibility lecture series is the academic centerpiece of the 250th celebration and a total of 15 distinguished speakers from varying disciplines will come to campus during the school year to take part in the forum.

Princeton University Professor Amy Gutmann will give a talk titled "Religious Liberty and Civil Responsibility" next Thursday. All of the responsibility lectures will take place in the Science Center Addition, Room A214 at 7:30 p.m.

WRITE FOR THE RING-TUM PHI

The Ring-tum Phi invites freshmen and other students interested in working on the newspaper to attend our weekly meetings 7:30 p.m. Tuesday nights. You can control the time commitment: Write one article a month to have writing samples for job interviews or talk to one of our editors about an assistant editor position and spend every weekend in the office.

FILM SOCIETY SEASON OPENS WITH A STORM

The film society will open its 1998-99 season this weekend with "The Ice Storm" (USA, 1997). Directed by Ang Lee, "The Ice Storm" takes place as an early winter storm descends on Connecticut. In a wooded suburb, affluent adults and teenagers stir restlessly in their homes, depressed not only by their lives, but by their entertainments.

Film society screenings are at 7:30 p.m. on Friday and Saturday in the Troubadour Cinema. There is no charge for admission.

FACULTY PERFORM IN LENFEST

The department of music will present a faculty recital, "From Germany to America," 8 p.m. Saturday in the Lenfest Center. The performance is free and open to the public.

Pianist Timothy Gaylard, professor of music, will perform Beethoven's *Sonata in C-sharp minor*, Op. 27, No. 2, a *Waltz on Yankee Doodle* and two excerpts from Aaron Copeland's *Rodeo*. Tenor Scott Williamson, director of the University Chorus, will sing *Pierrot's Dance Song* by Korngold, three songs by Kurt Weill, two songs from *Des Knaben Wunderhorn* by Mahler and two song cycles, *Bestiary of Dreams* by Convery and *A Winter Comes* by Morten Lauridsen.

NEW TREES TAKE ROOT ON FRONT CAMPUS

Over the summer, W&L replaced approximately 25 trees on the front campus and in front of the faculty housing area. A consultant said that the old trees were diseased, damaged and dangerous.

DINING SERVICES WINS NATIONAL AWARD

W&L's Dining Services department was recently honored by the National Association of College & University Food Services. W&L placed second in a national contest in the category of "Residence Hall Dining Special Event Theme Dinner" for its "Nutcracker" theme holiday dinner last December. The award marked the fourth time since 1991 and the second year in a row that W&L has been honored by NACUFS.

GAIN ADVERTISING EXPERIENCE

Students interested in advertising or public relations careers are needed to join *The Ring-tum Phi* advertising team. If you are interested, e-mail phi@wlu.edu. It will look great on your resumé.

MOYERS SPEAKS ON DRUGS, ALCOHOL

William Cope Moyers, director of public policy for the Hazelden Foundation, will be speaking about drug and alcohol addiction, treatment and education 7:30 p.m. in Room 327 in the C-School.

The title of his lecture is "The Great Awakening," an overview and analysis of the last 200 years of U.S. public policy and drug addiction. Moyers, who graduated from W&L in 1981, has appeared on "Larry King Live," "The Oprah Winfrey Show" and "The Today Show." His work has also been featured in *The New York Times* and *Newsweek*.

LENFEST TICKETS GO ON SALE

Tickets for Opera Roanoke's "La Bohème," Kiev Camerata and "Rosencrantz and Guildenstern are Dead" go on sale today. Call the Lenfest Box Office for further information at 463-8000.

THEATER DEPARTMENT HOLDS AUDITIONS

The theater department is pleased to announce open auditions for its upcoming play "Rosencrantz and Guildenstern are Dead" by Tom Stoppard and directed by Al Gordon. Auditions will be held Thursday and Friday at 4 p.m. and 7:30 p.m. in the Lenfest Center's Johnson Theatre.

Auditioners should prepare a reading of any 10-line speech from Hamlet. Scripts are available from the theater department secretary. Fifteen roles are available. Rehearsals will run Sept. 21 to Oct. 22. Performance dates are Oct. 23 through Oct. 26.

NOMINATE SENIORS FOR WHO'S WHO

Anyone who wishes to nominate a member of the current undergraduate senior class for selection to "Who's Who Among Students in American Universities and Colleges" may do so by submitting the name and qualifications of that student to Dean David Howison in Payne Hall 9 by October 1, 1998.

Criteria for selection to "Who's Who" include scholarship, participation and leadership in academic and extracurricular activities, citizenship and service to W&L and potential for future achievement.

WINTER SPEAKS IN LEE CHAPEL

William Winter, J.D., former governor of Mississippi and a member of the United States Committee on Race Relations, will speak in Lee Chapel 8 p.m. Tuesday. His lecture is sponsored by PRIDE, Programming for the Respect of Individuals in Diversity in Education.

LEARN TO SWING FOR THE 250th BALL

Students can sign up for beginner level swing classes at the Lexington School of Dance to prepare for the 250th ball. For more information, call 463-4466 or 463-7662.

ATTEND STUDY ABROAD FAIR

The Study Abroad Fair will be held 11 a.m. to 4 p.m. Wednesday on Stemmons Plaza. Representatives from more than 20 different programs will explain opportunities for academic year, term or summer study. Faculty are encouraged to attend to learn about opportunities for their students and advisees as well.

e-mail General Notes to phi@wlu.edu

BEYOND the BLUE RIDGE

PARENTS JAILED FOR CAGING DAUGHTER

Parents convicted of locking their 7-year-old daughter in a dog cage stained with urine and feces were sentenced to a year in jail by a judge in Wisconsin who said they deserved compassion despite their despicable conduct. Court-appointed psychiatrist Darold Treffert said the girl was "a very difficult child."

THREE TO BE FIRED FOR RACIST FLOAT

Two firefighters and a policeman will be fired for participating in a New York City Labor Day Parade float that mocked the dragging death of a black man in Texas, city officials said. The "Black to the Future" float featured nine white men, wearing black make-up and dreadlock wigs, who threw watermelons and fried chicken and carried boom boxes.

MARS' MOON HAS HIP-DEEP DUST

Phobos, the larger of Mars' two small moons, is covered in 3-foot-deep dust formed by meteoroid impacts over millions of years, according to images captured by the orbiting Mars Global Surveyor. The images were released Friday by NASA.

JAPANESE-AMERICAN COMPENSATION ENDS

The Justice Department has ended its 10-year effort to find and compensate Japanese-Americans forced by the United States into internment camps during World War II. More than 81,000 Japanese-Americans received payments—an estimated 98 percent of those eligible under the 1988 law that set up the \$1.6 billion reparations program.

DRUG APPEARS TO FIGHT DEPRESSION

Scientists may have stumbled onto an entirely new way to treat depression: Merck & Co.'s new drug, the subject of an account published Friday in the journal *Science*, works on a chemical pathway that differs from every antidepressant sold today and offers hope to patients who get no help from standard therapies.

AUTHORS BACK AFFIRMATIVE ACTION

Racial preferences at elite colleges and universities have opened the door to success for black Americans, according to a new book by two former presidents of Ivy League institutions. The book from the Princeton University Press is being released in the midst of challenges to affirmative action in higher education.

—compiled from AP

FOR THE EDUCATION and RESEARCH COMMUNITY

★★★★★
—Morningstar ratings for the CREF Global Equities Account, CREF Equity Index Account, and CREF Growth Account*

"...America's Top Pension Fund."
—Money Magazine, January 1998

AAA
—S&P and Moody's rating for TIAA**

Your service bowled me over!
—William Ravdin, TIAA-CREF Participant

HIGH MARKS FROM MORNINGSTAR, S&P, MOODY'S, MONEY MAGAZINE AND BILL.

We take a lot of pride in gaining high marks from the major rating services. But the fact is, we're equally proud of the ratings we get every day from our participants. Because at TIAA-CREF, ensuring the financial futures of the education and research community is something that goes beyond stars and numbers.

We became the world's largest retirement organization by offering people a wide range of sound investments, a commitment to superior service, and

operating expenses that are among the lowest in the insurance and mutual fund industries.**

With TIAA-CREF, you'll get the right choices—and the dedication—to help you achieve a lifetime of financial goals. The leading experts agree. So does Bill.

Find out how TIAA-CREF can help you build a comfortable, financially secure tomorrow.

Visit our Web site at www.tiaa-cref.org or call us at 1 800 842-2776.

TIAA CREF Ensuring the future for those who shape it.™

* Source: Morningstar, Inc., July 31, 1998. Morningstar is an independent service that rates mutual funds and variable annuities. The top 10% of funds in an investment category receive five stars and the next 22.5% receive four stars. Morningstar proprietary ratings reflect historical risk-adjusted performance and are subject to change every month. They are calculated from the account's three-, five-, and ten-year average annual returns in excess of 90-day Treasury bill returns with appropriate fee adjustments, and a risk factor that reflects performance below 90-day T-bill returns. The overall star ratings referred to above are Morningstar's published ratings, which are weighted averages of its three-, five-, and ten-year ratings for periods ending July 31, 1998. The separate (unpublished) ratings for each of the periods are:

| | CREF Stock Account | CREF Global Equities Account | CREF Equity Index Account | CREF Growth Account | CREF Bond Market Account | CREF Social Choice Account |
|---------|----------------------------|------------------------------|----------------------------|----------------------------|----------------------------|----------------------------|
| Period | Star Rating/Accounts Rated | Star Rating/Accounts Rated | Star Rating/Accounts Rated | Star Rating/Accounts Rated | Star Rating/Accounts Rated | Star Rating/Accounts Rated |
| 3 Year | 4/2,120 | 4/459 | 5/2,120 | 5/2,120 | 4/719 | 4/2,120 |
| 5 Year | 4/1,363 | 5/235 | N/A | N/A | 4/487 | 4/1,363 |
| 10 Year | 4/674 | N/A | N/A | N/A | N/A | N/A |

** These top ratings are based on TIAA's exceptional financial strength, claims-paying ability and overall operating performance. Based on assets under management. Standard & Poor's Insurance Rating Analysis, 1998; Lipper Analytical Services, Inc., Lipper Director's Analytical Data, 1998 (Quarterly). CREF certificates and interests in the TIAA Real Estate Account are distributed by TIAA CREF Individual and Institutional Services. For more complete information, including charges and expenses, call 1 800 842-2733, extension 5509, for the CREF and TIAA Real Estate Account prospectuses. Read them carefully before you invest or send money.

coming soon... Get ready for the Phi classifieds

The Japan Exchange and Teaching Program 1999

Teach English in junior and senior high schools in Japan
Learn about Japanese culture and people
Gain international experience

Requirements

- Have an excellent command of the English language
- Obtain a bachelor's degree by June 30, 1999
- Be a U.S. citizen
- Be willing to relocate to Japan for one year

A JET Program Representative will be at Washington & Lee University on Wednesday, September 16 for a Study Abroad Fair from 11:00 A.M. to 4:00 P.M. outdoors. Contact the Office of International Education or call the JET office at (212) 238-6772.

WANT TO MAKE SURE BANER DOESN'T TOW YOU AGAIN?

Raffle tickets for President Elrod's parking space* will be on sale from Tuesday until Friday at the Co-op. Proceeds benefit W&L Habitat for Humanity.

* M-F 8-5; first half of fall term

THE ARMY CAN HELP YOU GET A \$40,000 EDGE ON COLLEGE.

The Army can help you get an edge on life and earn up to \$40,000 for college through the Montgomery GI Bill plus the Army College Fund.

Here's how it works. Enlist for four years. You then contribute \$100 a month for the first year from your \$11,100 first year salary. The Army then contributes the remainder. Enlist for three years and you earn \$33,000 or enlist for two years and earn \$26,500. Army opportunities get better every day. If you qualify, you could train in one of over 200 challenging and rewarding high-tech skills in fields like avionics and electronics, satellites and microwave communications, computer and radar operations—just to name a few.

It makes sense to earn while you learn. For more information about getting money for college, call your Army Recruiter today.

Call: 540-886-2651
ARMY. BE ALL YOU CAN BE.™
www.goarmy.com

University Days SAVE \$6.00 at BUSCH GARDENS AND WATER COUNTRY USA.

Present this coupon when purchasing your ticket at any Busch Gardens Williamsburg or Water Country USA general admission window to receive your discount on the regular one day admission price. Children two and under are free. Admission price includes all regularly scheduled shows and attractions. This coupon has no cash value and cannot be used in conjunction with any other discount. Prices and schedules are subject to change without notice. Busch Gardens Williamsburg and Water Country USA have a "no solicitation" policy. Limit six tickets per coupon. Offer expires November 1, 1998 at Busch Gardens Williamsburg and September 20, 1998 at Water Country USA.

PLU #2206/2207

For General Park Information, Group Rates (15 or more) And Catering information call 757-253-3350

© 1998 TIAA-CREF. All Rights Reserved. New York, NY

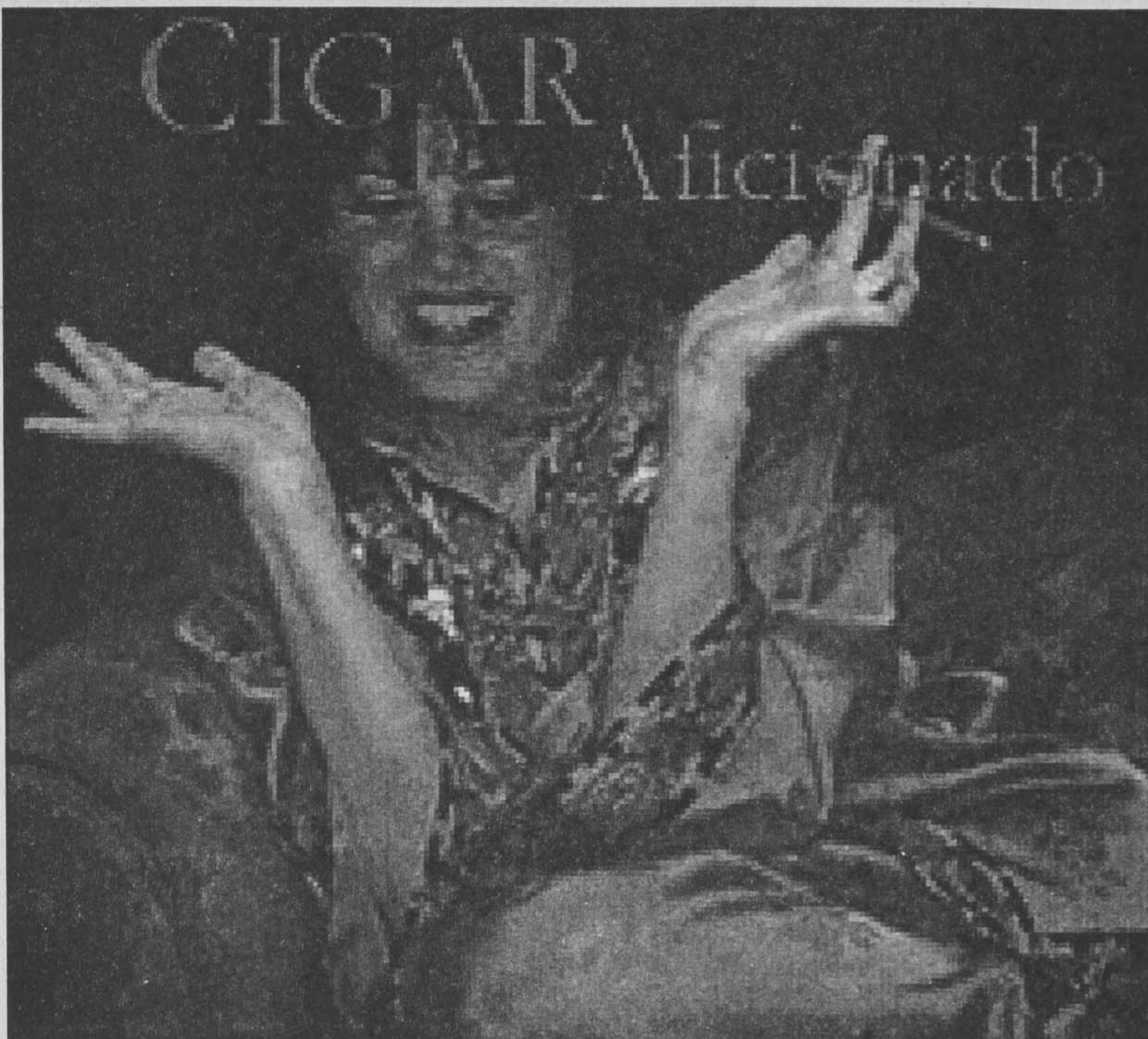


PHOTO ILLUSTRATION BY JASON WILLIAMS/MANAGING EDITOR

Independent Counsel report sez Prez has really blown it

By KENNETH STARR

PH INDEPENDENT COUNSEL

The following quotes are all excerpted directly from Kenneth Starr's Independent Counsel Report, as taken from <http://CNN.com/starr.report>. Comments are from The Looney Bin.

The President suggested that she bring him some slices of pizza.

From that moment on it was true love.

During many of their sexual encounters, the President stood leaning against the doorway of the bathroom across from the study which, he told Ms. Lewinsky, eased his sore back.

I guess it wasn't an illicit sexual affair... she was just administering therapeutic massage.

She testified: "I never expected to fall in love with the President. I was surprised that I did."

Hey, what girl hasn't had a crush on a big tubby redneck twice her age?

"I was always giving him my stupid ideas about what I thought should be done in the administration or different views on things."

Wait a minute... was this Monica Lewinsky's testimony or Hillary's?

After phone sex late one night, the President fell asleep mid-conversation.

The President fell asleep in the middle of phone sex? Did we elect Bill Clinton or Bob Dole?

"The President said that... he spent more time with me than anyone else in the world, aside from his family, friends and staff."

Who does that leave? Really.

If Ms. Lewinsky performed oral sex on the President, then — under this interpretation — she engaged in sexual relations but he did not.

Sounds logical to me.

In the windowless hallway adjacent to the study, they kissed. Before returning to her desk, Ms. Lewinsky wrote down her name and telephone number for the President.

What, the most powerful man in the world can't use the Yellow Pages?

While the President continued talking on the phone (Ms. Lewinsky understood the caller was a member of Congress or a Senator), she performed oral sex on him.

Having oral sex while talking on the phone! How rude! (Unless he was calling Ted Kennedy)...

"And then I think he made a joke... that he hadn't had that in a long time."

And now that Hillary's read this report he'll never have that again.

She performed oral sex. Once again, he stopped her before ejaculation because, Ms. Lewinsky testified, "he didn't know me well enough or he didn't trust me yet."

So he knew her well enough to put his privates in her mouth but not to let her finish the job? There's Arkansas logic for you.

"I asked him why he doesn't ask me any questions about myself and... is this just about sex... or do you have some interest in trying to get to know me as a person?" The President laughed...

That is pretty funny.

He also indicated that she could have any job she wanted after the election.

Ambassador Lewinsky? Vice President Lewinsky?

Award-winning author Charles Johnson speaks in Lee Chapel

Charles Johnson, winner of the National Book Award, will speak in Lee Chapel 7:30 p.m. tonight. Johnson's book, "Middle Passage," was the freshmen reading program selection this summer.

"[Johnson] is one of the five most significant American authors today," Mark Conner, Professor of English, said.

In 1990, Johnson won the National Book Award for "Middle Passage," his

second novel, becoming the first African-American male to capture the prestigious literary honor since Ralph Ellison in 1953.

Set in early 19th century New Orleans, "Middle Passage" is the adventurous

yet philosophical story of a freed black man who stows away aboard a ship that is a slaver bound for Africa.

Johnson holds the Pollock chair in humanities at the University of Washington.

—from Phi staff reports

MAN OH MAN, AM I EVER PSYCHED ABOUT THIS RESPONSIBILITY SYMPOSIUM

By KEVIN McMANEMIN

RAVING AND DROOLING

Like most people on this campus, I had only one thing in mind when I returned to Lexington last week: when will the Responsibility Symposium begin? All summer long I could barely contain my excitement. When I arrived in Lexington it was all my friends and I talked about.

We were all thrilled when we heard that, for the 250th anniversary, W&L would sponsor a series of lectures on religion, law and responsibility. What a great idea! I think I speak for all college students everywhere when I say that responsibility is a topic we find fascinating.

Young people have always been deeply concerned with being responsible, and my friends and I are no exception. We often sit around the frat house and discuss responsibility and how it relates to various academic disciplines. Are we being responsible? What is responsibility? How do Judeo-Christian ethics influence conceptions of responsibility in modern American politics? These are all questions we discuss regularly, and now we'll get to hear a bunch of professors from other colleges talk about them! What could be better?

You know, the other day the social chair of my fraternity suggested that we throw a party on Tuesday the 24th. "Next Tuesday night!" I cried, "the same night that Amy Gutmann, the Laurence S. Rockefeller Professor at Princeton University and co-author of the book "Color Conscious: The Political Morality of Race" (winner of the American Political Science Association's Ralph J. Bunche award for the best scholarly work in political science which explores the phenomenon of ethnic and cultural pluralism) is delivering her lecture 'Religious Liberty and Civil Responsibility' for the Responsibility Symposium!"

All of my brothers burst into laughter and the social

chair felt pretty stupid. Imagine, throwing a party when the entire student body will be packed into Room A214 of the Science Addition! Ha!

Seriously, though, I just hope I'll be able to find a seat. I mean I know how intellectually curious everyone on this campus is and I remember that even last year these school-sponsored lectures tended to get pretty packed. If I don't manage to get there early enough to find a seat, I guess I'll just have to wait until the book Prof. Davis is compiling from the speeches goes to press.

I just hope I can get to the bookstores before it sells out! If there's one thing more exciting than hearing about responsibility, it's reading about responsibility. I'll bet Prof. Davis got a big fat advance from the publishing company for that book. Talk about your surefire *New York Times* best sellers!

I'll tell you one thing: The Responsibility Symposium has already deeply affected my life. I haven't been able to sleep in weeks! I just lie there in bed at night thinking about how great the lectures are going to be and the adrenaline starts pumping through my veins and before I know it it's morning. My eyes are so red traffic stops when I blink. My life is a living hell!

Man, I love symposiums, I just love them, and this one is easily the most thrilling, awesome, downright orgasmic symposium I've ever heard about. It's going to be better than sex! I'm so glad they decided to commemorate the 250th anniversary of our school by holding a symposium that really speaks to my generation.

So, my friends, I'll see you Thursday in room A214 of the Science Addition when Ralph Lerner delivers his lecture "The American Founders and Responsibility" to open the Responsibility Symposium. Start camping out Wednesday night for the good seats! I know I will. It's not like I'll be able to sleep anyway.

24 seven

Monday

7:30 p.m. Charles Johnson, author of "Middle Passage." Lee Chapel.

Tuesday

12 p.m. W&L Employees' Christian Fellowship Brown Bag Lunch. Room 113, University Center.

6:30 p.m. Volleyball: W&L vs. Guilford College. Warner Center

7:30 p.m. Contact Lecture: "The Great Awakening." William Cope Moyers '81. Room 32, Williams School.

8 p.m. P.R.I.D.E. Lecture: William F. Winter, former governor of Mississippi. Lee Chapel.

Wednesday

11 a.m.-4 p.m. Study Abroad Fair. Stemmons Plaza.

Thursday

8:45 a.m. Golf: W&L Fall Classic. Lexington Golf & Country Club.

4 p.m. Women's Soccer: W&L vs. Hollins. Liberty Hall Field.

6:30 p.m. Volleyball: W&L vs. Hollins College. Warner Center.

7:30 p.m. Responsibility Symposium Lecture: Ralph Lerner. Room A214, Science Addition.

Friday

7:30 p.m. Film Society: "The Ice Storm." Troubadour Cinema.

Saturday

12 p.m. Men's Soccer: W&L vs. Virginia Wesleyan College. Liberty Hall Field.

1:30 p.m. Football: W&L vs. Guilford (A)

7:30 p.m. Film Society: "The Ice Storm" (USA, 1997), directed by Ang Lee. Troubadour Cinema.

8 p.m. Faculty Recital: Timothy Gaylard, piano, and Scott Williamson, tenor. Lenfest Center.

Sunday

1 p.m. Volleyball: W&L vs. Greensboro College.

AND THE WINNERS ARE...

In case you studied through the 50th Annual Primetime Emmy Awards last night, here are the big winners.



Outstanding comedy series: "Frasier" (NBC)

Outstanding actor in a comedy series: Kelsey Grammer, "Frasier" (NBC)

Outstanding actress in a comedy series: Helen Hunt, "Mad About You" (NBC)

Outstanding supporting actor in a comedy series: David Hyde Pierce, "Frasier" (NBC)

Outstanding supporting actress in a comedy series: Lisa Kudrow, "Friends" (NBC)

Outstanding drama series: "The Practice" (ABC)

Outstanding actor in a drama series: Andre Braugher, "Homicide: Life On the Street" (NBC)

Outstanding actress in a drama series: Christine Lahti, "Chicago Hope" (CBS)

Outstanding supporting actor in a drama series: Gordon Clapp, "NYPD Blue" (ABC)

Outstanding supporting actress in a drama series: Camryn Manheim, "The Practice" (ABC)

Outstanding miniseries: "From The Earth To The Moon" (HBO)

Outstanding made-for-television movie: "Don King: Only In America" (HBO)

publicity stunt" or a "seriously misguided mid-life crisis." No NBA team has signed Dornan as of press time, though the Toronto Raptors have expressed interest.

Beatles sue Oasis

London — Apple Corps sued members of the pop group Oasis today, charging that Oasis' upcoming album *Revolver* is exactly the same as the 1966 Beatles album of the same name. "The albums have the same lyrics, music, cover art... the only difference I can see is that on the back the words 'Lennon and McCartney' have been crossed out after each song and the words 'Liam and Noel Gallagher' pencilled in," said Ringo Starr. Apple lawyers are also investigating possible copyright infringements on the Oasis albums *Abbey Road*, *Meet the Beatles*, *With the Beatles* and *The Beatles* (called "the Blank Album" for its plain white cover). A spokesman for Oasis said that the band hopes to move beyond Beatles imitation and will soon be releasing classic al-

bums like *Dark Side of the Moon* and *Led Zeppelin III*.

SAT's biased against idiots, study says

Princeton, NJ — A landmark study conducted by Princeton University concluded that the Scholastic Aptitude Test contains a bias against the terminally stupid. "Our study shows that very smart people typically score in the 1300-1500 range, while the very stupid rarely break the 500 mark," asserts researcher Dr. Stan Lamont. The study is stirring up waves of protest among professional wrestling fans and other people of limited intelligence. "It's not fair that I should be kept out of the college of my choice based solely on my gross mental incompetence," said avowed moron Norm McNulty. Idiots are also pointing to related studies that show that intelligence is not as good a determinant of success in college as alcohol tolerance.

ROCKBRIDGE
GLOBAL VILLAGE

Unlimited Internet

Features:

E-mail

Full, unlimited access

2 MB webspace

Latest technology

Personalized local service

call RGV 463-4451

THE COLONNADE CAM



YES, BIG BROTHER IS WATCHING... and now you can watch too! Link up to the camera on top of Lee Chapel at <http://camera.uc.wlu.edu> for a constantly updated shot of the colonnade. This may not sound very exciting now, but check it out after rush when the sorority pledges start streaking the colonnade.

News off the Wire

Dornan boasts "mad skillz"

Orange County, Ca — "I gots mad skillz, what mo' can I say?" said former Senator Bob Dornan in a press conference held earlier today. Dornan, known for his outspoken conservative views, called the press conference to announce his intentions to play professional basketball now that his political career is over. When asked how he hopes to compete against professional athletes half his age and several feet taller, Dornan claimed that he would "dunk over their sorry asses" and reiterated that his "crazy phat skillz would pay da bills" on the basketball court. "B-1" Bob guaranteed that he would "drop bombs" all over his competitors. "I be like 'boom biggidy boom' scoring all up in that piece, you know what I'm saying?" said Dornan. Pundits are charging that Dornan's foray into professional basketball is either a "bad