

# Homecoming 1991

## A special supplement to The Ring-tum Phi



Squeeze will play the Pavilion Friday night at 9. Publicity photo

### Old football rivalry up for renewal

By Jay Plotkin  
Sports Editor

For the first time in almost fifteen years, Washington and Lee will carry its fierce classroom rivalry with North Carolina's Davidson College to the football field.

The two teams will collide Saturday at 2 p.m. on Wilson Field for the annual Homecoming game.

While both colleges are strong academic institutions which often compete for the same students, this weekend's battle will call for the clash of bodies and football pads, rather than minds.

"We put Davidson on the football schedule because of the similarities between the schools," said W&L Athletic Director Mike Walsh.

"I know that both schools' admission's offices cross-recruit," he said, adding that the two schools traditionally attract top notch students who are also quality athletes.

In a recent *US News & World Reports* poll, Davidson and W&L were ranked together in several categories. Davidson was ranked 21st and W&L 22nd among the nation's top liberal arts colleges. W&L was ranked 1st and Davidson 2nd in the "Best Buy" category.

"I think you can underscore the similarities of the schools with the *US News & World Report* article," said Walsh. "We are two schools with like-minded academic interests. The main difference though, is that while we are strictly Division III, Davidson is Division I with the exception of football."

□ Please see DAVIDSON page 11

### Squeeze, Skins to start off Homecoming Weekend

By Jason Kelley  
Editor

For the second year in a row, Washington and Lee's Student Activities Board has been able to book a nationally-known band for homecoming.

This year, the English band Squeeze will headline the Friday night concert at the Pavilion. Last year, The Smithereens played for homecoming.

"It was really a coup to get Squeeze to play here," Dabney Collier, who is in charge of booking bands for the SAB. "It's really difficult to get nationally known bands to play at small colleges."

Collier said Squeeze will be playing tonight in Washington D.C. where tickets will be \$24. Tomorrow at W&L, the SAB will only be charging \$8.

Tomorrow's concert will be only the second time Squeeze has played with its new opening band, The Candy Skins. According to Collier, the members of the original opening band lost their U.S. visas and had to return to Great Britain.

Formed in South East London in 1974, Squeeze was originally named U.K. Squeeze to distinguish it from the disbanded American Squeeze. The band broke up in 1982, but three years later three of the original five members of the band, Chris Difford, Gilson Lavis and

Glenn Tilbrook, were joined by Keith Wilkinson to form the present Squeeze.

The band's first hit "Take Me I'm Yours," came off their second album in 1978. The cut was a top 20 hit in the U.K. that year.

Other early hits from the band include "Up the Junction," "Cool for Cats." In 1981 they opened a series of concerts for Elvis Costello's U.S. tour. He in turn produced the group's fourth album, *East Side Story*, which included their hits "Pulling Mussels from a Shell" and "Tempted".

Later hits from the band include "Labelled with Love," "853-5937," "Hourglass" and "Satisfied".

A compilation of their hits, *Singles - 45's and Under* reached number 3 on the English charts in 1983.



The Candy Skins Publicity photo

Friday's opening band, The Candy Skins, released their debut album, *Space I'm In*, this year in the U.K. and the U.S.

Also from Great Britain, the band describes its sound as "somewhere between the lyricism of the Sixties and the aggression of punk."

The Candy Skins songs display influences ranging from Bob Dylan to the Sex Pistols to the Beatles and the Byrds.

After W&L, Squeeze and The Candy Skins will continue their U.S. tour in Philadelphia, Oswego, N.Y., Baltimore, New York City, and 17 other cities. The tour will conclude in mid-November in Dallas.

### INSIDE

- HISTORY • 2
- SCHEDULE • 2
- PAST QUEENS • 4
- BIG FOOTBALL • 5
- THE NOMINEES • 6
- CHEERLEADERS • 8
- REUNIONS • 9
- GREEK PLANS • 10

Although students and alumni alike participate in Washington and Lee's annual Homecoming activities, few are aware of the rich history surrounding the long-standing tradition.

Since its inception, Homecoming has been observed and interpreted in many different ways. This supplement is dedicated to exploring several past and present Homecoming activities that have spurred its continuance.

For such spirit with which some students view Homecoming also may have inspired the creation many years ago of a student publication named after the following football song:

*Each other's back, boys, Has got a knack, boys,  
For making gains, sir, Round the end.  
And it's a sin, sir, For Oberlin [a W&L player], sir,  
To buck the 'V.M.I. boys' line so awful hard.  
Then join the yell, boys, And yell like hell, boys,  
Sure enough.  
To W&L U., boys, And football, too, boys,  
Let's give a rousing, rumbling, roaring, football yell.  
Ring-tum phi, sticker bum!  
We are the stuff from old Lexington"*

-Pamela Kelley  
Supplement Editor

## WEEKEND SCHEDULE

### FRIDAY, OCTOBER 11

- 12:10 p.m. THE JOHN RANDOLPH TUCKER LECTURE: "The First Amendment in the Year 2000," Floyd Abrams, Cahill, Gordon & Reindel of New York. Moot Courtroom, Lewis Hall. Public invited.
- 12:30 p.m. LUNCHEON ON THE LAWN  
2 p.m. SEMINAR: "Robert E. Lee: Soldier and Educator," J. Holt Merchant '61, W&L professor of history, and Mary P. Coulling author of *The Lee Girls*. Lee Chapel. Public invited.
- 6 p.m. VOLLEYBALL: Generals vs. Randolph-Macon Woman's College. Warner Center.
- 6:30 p.m. RECEPTION FOR ALUMNI. W&L Alumni House.
- 7:30 p.m. FIVE STAR GENERALS' REUNION BANQUET. Evans Dining Hall.
- 9 p.m. S.A.B. CONCERT: Student Activities Pavillion.

### SATURDAY, OCTOBER 12

- 9:30 a.m. MEMORIAL SERVICE FOR GEN. ROBERT E. LEE: Lee Chapel. Public invited.
- 10:30 a.m. CHORAL CONCERT: Lenfest Center.
- 11 a.m. MEN'S TENNIS: Alumni Match. Varsity Courts; VOLLEYBALL: Generals vs. Goshen. Warner Center.
- 12 Noon FRATERNITY RENAISSANCE DEDICATION CEREMONY: Red Square, Henry St.
- 12:30 p.m. LUNCHEON ON THE LAWN.
- 2 p.m. FOOTBALL: Generals vs. Davidson College. Wilson Field.
- 4:30 p.m. ALUMNI RECEPTION: W&L Alumni House.

# Bonfires, pajamas distinguish Homecomings through the years

From staff reports

1925. The first Homecoming. On Saturday, November 7th, 1925, thousands of people filled Wilson Field, bleachers erected on both sides and both ends of the field, and all standing space to watch the Generals under a steady drizzling rain beat UVa 12-0. Although the Homecoming crowd no longer fills the stands and traditions changed, W&L still holds the spirit of that first homecoming.

The Alumni Magazine for October 1925 announced the "First Official Annual Homecoming Day." Tickets were \$2 and the seats were reserved. Alumni were invited to attend a meeting of the Alumni Association, Inc. where they would be addressed by G.H. Denny, a former W&L president who had gone on to become president of the University of Alabama (which was sharply criticized elsewhere in the same issue of the magazine for stealing the W&L Swing and calling it the Alabama Swing). Alumni were also invited to attend classes that morning. "That morning" was Saturday. Things have changed.

Accommodations were made for 10,000 people. Fraternity house managers' names were listed in the Alumni Magazine so alumni could contact them if they wanted to stay in their fraternity houses. The railroads offered special rates from all over the state to Lexington. Game tickets were on sale in Roanoke, Lynchburg and Staunton.

The night before the game a pep rally was held and a thousand people attended. There were cheers, speeches and a bonfire.

Local merchants were asked to keep their stores closed during the afternoon so that everyone in town could attend the game. It must have seemed like everyone in the state was there to watch the Generals beat UVa. A dance was held on Saturday night. The First Official Annual Homecoming Day was such a success that they decided to keep doing it.

Many of the traditions which grew up over the years are now gone: fraternity decorations, freshman parades, the 13 Club, pep rallies, the "Opening Dance."

On Friday night, the night before the big game, the freshmen, wearing pajamas, and other students would gather in the gym for a pep rally. W&L's cheerleaders would lead the students in cheers and speeches would be given by the coaches and players. In 1955, R.J. Reynolds Tobacco Company gave 1,000 megaphones to the students for the pep rally.

The parade must have been a sight. In 1955 the *Phi* ran a picture of the parade. In the picture was group of students wearing pajamas, one of them bearing a placard reading, "Shove It Up a Turkey--Gobble, Gobble."

13 days before Homecoming, the 13 Club would begin its initiation period for 13 new pledges from 13 different fraternities who each had paid an initiation fee of \$13.13. At some point during these 13 days the statue of Cyrus McCormick, the one standing guard on front campus, the one most visitors think is Lee, was tarred and feathered, and the base covered with number 13s.

What a fine time it must have been.

The dates of Homecoming weekend skipped around through the years. It was possible for

Homecoming to fall anywhere between mid October and late November before settling down to its present position of early October. Homecoming has occurred every year since 1925, except for 1954 when the festivities were cancelled. Every so often Homecoming and Openings were combined, like in 1962 and '65.

Saturday of Homecoming would usually begin with a football game, just as it does now, but without the liquid pleasure of recent years. In the 1955 Homecoming issue of the *Phi* the EC stated that its policy against drinking in public would be strictly enforced at that year's game.

□ Please see PAST page 11



Calyx photo

Two Homecoming traditions now lost. Above: retired professor Keith Shillington kisses the Queen in 1986. He crowned the Homecoming queen for 32 years. Below: A torchlight pajama parade through town in the '50s.



File photo

# Saturday service set for Lee Chapel

By Joyce Bautista  
Staff Reporter

*"In essential respects his spirit beautifully lives before and with the boys. The ultimate monument to him is the University which has now linked his name with that of Washington in its title. There was a university which was dead and he made it alive. It is alive today largely in the mold he formed for it; it breathes the inspiration he brought."*

-Dr. Francis Pendelton Gaines, former Washington and Lee President

This Saturday marks the 121st anniversary of the death of General Robert E. Lee, president of, then Washington College, from 1865 to 1870. Capt. Robert C. Peniston, director of Lee Chapel, will be the featured speaker for the university's annual memorial service, sponsored by the W&L Alumni Association and two Civil War reenactment groups, honoring Lee.

"I accepted the offer to speak

at the memorial service with pleasure," Peniston said. "It's a great honor for a non-alumnus to be asked to do this."

Peniston's speech will mark the first time he has delivered featured remarks at W&L, although he has served as director of Lee Chapel for more than a decade.

According to Peniston, his speech is based on the West Point motto "Duty, Honor, Country." "Lee grew up under this motto," said Peniston, a '46 alumnus of the United States Naval Academy in Annapolis, Md. "I think the whole country should take heed of it."

Peniston, a retired Navy captain after 30 years, says since becoming director of Lee Chapel his admiration for the Lee family has grown. "He saved the place," Peniston said, "and set a standard that presidents have been trying to match ever since."

Peniston, an avid teller of tales, recalls a Lee remark he stumbled across in his reading:

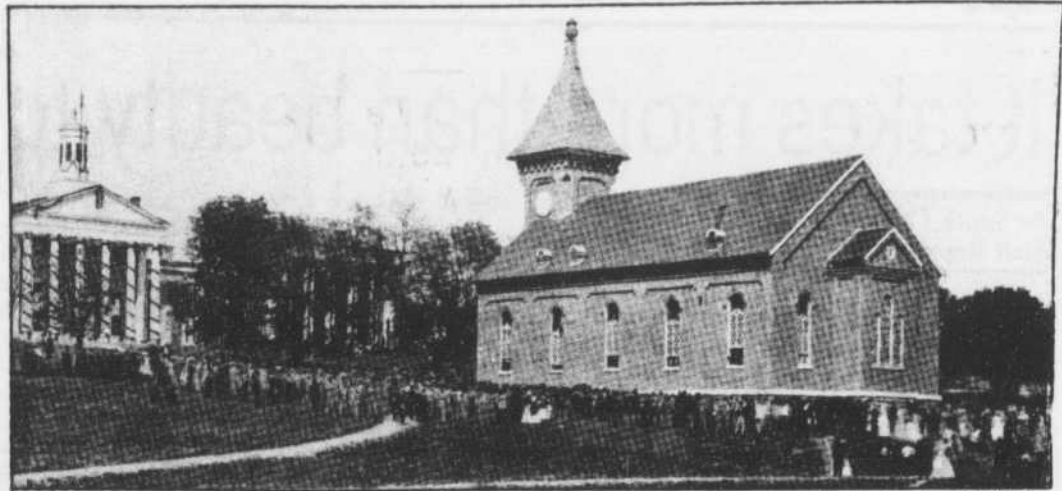


Photo from Lexington in Old Virginia

## View of the W&L campus on the day of General Lee's funeral

*"When [Lee] asked what rules were in effect at then Washington College, the general replied, 'We have no rules here except that every student be a gentleman.'"*

Peniston says he will stress in his speech Lee's contribution of an Honor Code similar to that of his Alma Mater, West Point. "Very simply, this is his legacy to the school he rescued from the ash heap of war."

He also cited tangible signs of Lee's influence on the college, such as the chapel, the Commerce school and the school of Journalism, which were established to provide students with choice,

which he said was very important to Lee.

And Peniston should know the makings of a great man, for he has been in the presence of of formidable gentlemen. Because of his profession and rank, he has met numerous presidents, such as Truman, and international figures, such as Winston Churchill.

His career at Washington and Lee began 15 years ago when he was asked to be the new director of Lee Chapel. His ties to the university run even deeper. His son graduated from W&L in '75 and his son-in-law in '76.

According to Peniston, the

memorial service tradition began five years ago when he was asked if it could be held in Lee Chapel.

As part of the ceremony, Peniston personally rings the chapel's bells 19 times, the equivalent of a 19 gun salute. "That is how many he would have been entitled to as the commander-in-chief of the Confederate forces," Peniston said.

The service will begin Saturday at 9:30 a.m., the time of Lee's death in 1870. At that time, the Liberty Hall Volunteers,

□ Please see LEE page 11




## Shear Timing

Hair Salon  
17 S. Randolph St.  
464-1145

*If you're looking for a new style for homecoming, a good trim before Mom & Dad arrive, or you just would like a change of atmosphere. Call us today for an appointment with*

**Sherry, Kirsten or Chris**  
464-1145

*We carry Nexus, Tressa and Paul Mitchell products.*



Welcome  
W&L  
Alumni  
the  
**Jefferson**  
Florist to the Homestead

Ten East Nelson  
Lexington      **463-9841**

# Alvin Dennis

## Welcome

## W&L Alumni

Sero shirts, Woolrich and IZOD sweaters, Woolrich outerwear, dress corduroys, Duckhead khakis, Bass, Walkover, Clark & Top-sider shoes. After-Six Formal Wear - Fancy cummerbund and tie sets. Rugby shirts - W&L belts, ties and T-shirts.

Ceramic gifts for sale

Rack of year-round and summer suits

**Reduced 20%**

102 W. Washington St.  
463-5383

Visa     
 Mastercard     
 Choice     
 Student Charge

# It takes more than beauty to be W&L's queen

By Smith Carlson  
Staff Reporter

"We're looking for someone with a strong sense of values; someone who is intelligent. We're looking for the girl who best represents Washington and Lee," explained Robert de Maria, chairman of this year's Homecoming Queen Selection Committee.

"It is very difficult," he said. "Last year any of them would have been a great representative."

The judges, who are faculty members selected by the Alumni Relations staff and the student alumni-relations group Kathekon, include: de Maria, University Librarian Barbara Brown, Campaign Events Coordinator Christine Davis, former Director of Security Charles Murray and Chemistry Prof. Michael Pleva.

They have the responsibility of interviewing candidates and determining which nominee is best suited for the title. They will judge the contestants on poise, appearance, and activities.

The process begins with the announcement of candidates from various campus organizations. To be eligible, an organization must be officially recognized by the university.

Mostly fraternities and sororities submit nominees, however representatives from the Minority Students Association, the Independent Students Union, the International Club and the W&L Law School's Student Bar Association, 24 in all, have been announced.

In choosing a candidate, many groups take far more into consideration than simply appearance.

Sigma Chi fraternity took several factors into account. "She helped us out a lot last year," said sophomore Trevor Norris of the group's nominee. "She hangs out at the house and is a good friend."

An organization's representative does not necessarily have to attend W&L either. The only current requirement for nominees is that they attend a college or university, although in past years several wives of W&L students have been elected queen. Some fraternities have even dolled up their members and presented them in drag.

Sigma Alpha Epsilon's candidate this year is a student at

Mary Baldwin. "We all know her and we get along really well," said an SAE member. "It was a unanimous vote."

The International Club, which elected a new vice-president and a Homecoming representative at the same meeting, went so far as to make up ballots for their nominations.

Contest coordinators Rob Mish and recent graduate Chris Baradel described the type of female they think organizations tend to chose as their nominee.

"Fraternities want a girl who comes to the house, who is known by the fraternity, and who is well-liked," said Baradel, himself a graduated Pi Kappa Alpha member.

Others however, said they consider other criteria. One fraternity member said his house's nominee was friends with only a few of its members and probably had not set foot in the house, but the group chose her because "We wanted someone who could win," he said candidly.

On Friday, the proffered candidates will assemble for interviews with the judges. Each interview lasts approximately seven minutes and consists of three pre-agreed upon questions.

The questions, explained de Maria, are thought provoking. "It's important that we get to know her," he said. "And seven minutes is not long to do that in."

Following the interviews, the judges will compare notes and the process of elimination begins. After careful consideration, the judges come up with two finalists as the queen.

According to Associate Alumni Relations Director Robert Mish, no duties go along with the title, and that winners typically return the crown to a university official after half-time.

The court will officially be presented during half-time at the Homecoming game on Saturday.

Student Body President Giles Perkins will introduce the court, and amidst much anticipation, announce the name of W&L's Queen for a day.



The Homecoming queens for 1965 and 1972 bask in the glory of their wins.



## OCTOBER SPECIALS Sundays

Rent 2 Movies at regular price, get 1 of equal or lesser value. **FREE!**

(99¢ movies excluded)

**Westerns - 99¢**  
**Game Genie Is Here**

We also carry, CD's, T-shirts, Trading Cards, cassettes and posters.  
We special-order CD's.

Stonewall Square

463-9800



Reservations are recommended

30 N. Main St., Lexington

463-3020

Happy Homecoming W&L!

**R.L. Hess & Bro.**

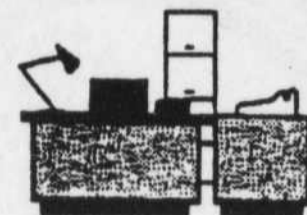
Watchmakers, Jewelers, Silver, China and Crystal

A large selection of Gift Items

WM. L. HESS, Jr.  
Owner

121 S. Main St.  
Lexington, VA 24450  
(703) 463-2833

**K&W Office Equipment**



Have a great Homecoming, W&L!

"20% Discount on all non-sale items to students"

(703) 463-1620

11 E. Nelson Street  
Lexington, VA 24450  
VISA, MC, AMEX



**E. BOLIVAR HUFFMAN**

Agent  
203 South Main Street  
Lexington, VA  
Phone: 463-7719 Fax: 463-4061

# W&L can't evade football spirit

By Jacob Kimball  
Staff Reporter

For well over a century, football has been a part of the Washington and Lee tradition. At times the small campus has even received national attention for its exploits on the gridiron, and was considered a force on the national college football scene. During this time span the game of football changed drastically, as did its role on this campus.

The history of W&L football goes back to the year 1873, as the first contest occurred only eight years after the inception of the now well-entrenched honor code. The program consisted of a series of games with the nearby Virginia Military Institute and a few other schools.

The schedule gradually expanded to include a broader set of opponents, while games with VMI developed into battles for bragging rights.

In the early 20th century, W&L started producing some sensational team and individual performances. The revered Cy Young,

who earned sixteen varsity letters along the way, led the first of the college's truly dominating teams. The teams of 1912 to 1915 relied heavily on Young's talent as they amassed a total of 32 wins against only 3 losses and one tie.

In 1954 two players were caught turning in tests with exactly the same responses. The whole situation was turned over to the Executive Committee, and when the dust had settled, 14 football players and one cheerleader, had withdrawn from the school due to incriminating evidence.

This cheating scandal, coupled with the debt that had accumulated due to athletic scholarships, forced the Board of Trustees into making a decision concerning the future of football at W&L.

The Trustees decided to de-emphasize the program amid fervent protests from some alumni. This decision was based on the conclusion that the university could no longer continue to strike a balance between strong academics and big-time football.

After this decision the program started from scratch, because most of the remaining scholarship play-



Calyx photo

**The team of 1954 was good at football, but a cheating scandal convinced the Board of Trustees to terminate athletic scholarships.**

ers left, and expected freshman recruits went elsewhere. Things did not start to look up until Lee McLaughlin was hired as head coach.

In a tribute to McLaughlin's coaching ability and enthusiastic play of his players, the Generals turned in back-to-back immaculate seasons.

The 1961 team received recog-

nition as the best small team in the nation after its undefeated season. This designation was given by the Washington Touchdown Club, and again the spirit of college football gripped the campus.

The Trustees stuck to their policy of no more athletic scholarships with conviction, while still retaining its high academic

standards for those on or off the playing field.

According to Frank Parsons, long-time university publicist, the men who composed the teams of this new era were quality individuals with a strong sense of camaraderie, that would be upheld to the present.

## FAMOUS MAKER CLASSICS

only at

# THE COLLEGE TOWN SHOP

463-2731  
111 W. Nelson St.

## All Suits & Sport Coats - 20% Off Alumni Special

### For Men

BD Baggies  
Ruff Hewn  
Duckheads  
Dirty Bucks  
Corbin Suits  
Wild, Wonderful Ties  
Woolrich  
Flasks  
Crest Belts & Polo Shirts  
Embassy Oxford or Flannel  
Boxers

**We have served W&L since 1926**

### For Women

Lanz  
Corbin  
Ruff Hewn For Women  
Tanner Sport  
Jones  
Belts  
Jayson Younger Sweaters  
Round The Clock Hose



**Alpha Phi Omega**  
Joan Michelle Sharp, W&L '93  
Escort: Leland Yee

Comment: "This picture was taken after a rigorous 5 1/2 mile hike up Mt. LeConte. Determination and self confidence carried me through the sheerest parts, up to the summit where you see me smile."



**Beta Theta Pi**  
Janet Doliveira, W&L '94  
Escort: Chad Loizeaux

Comment: "I have come to understand the importance of leadership and the role an individual plays in representing her peers. I feel this is an opportunity to give something back to W&L."



**Chi Omega**  
Whitney Hopkins, W&L '92  
Escort: Scott Kenridge,  
Hampden-Sydney '92

Comment: "I'm so excited to be representing my sisters in Chi Omega. I think it's going to be a great Homecoming weekend."



**Chi Psi**  
Dale Wyatt, W&L '92  
Escort: Ed Wilson

Comment: "Over the last four years, I have been involved in diverse activities that have enabled me to become friends with a wide range of people inside and outside the W&L community."



**Delta Tau**  
Alexandra Steward  
Escort: R...

Comment: "God sense must ever j to choose Alex,



**Kappa Kappa Gamma**  
Muriel Foster, W&L '92  
Escort: Chip Larkin

Comment: "I'm proud to be a general and would love to see them win!"



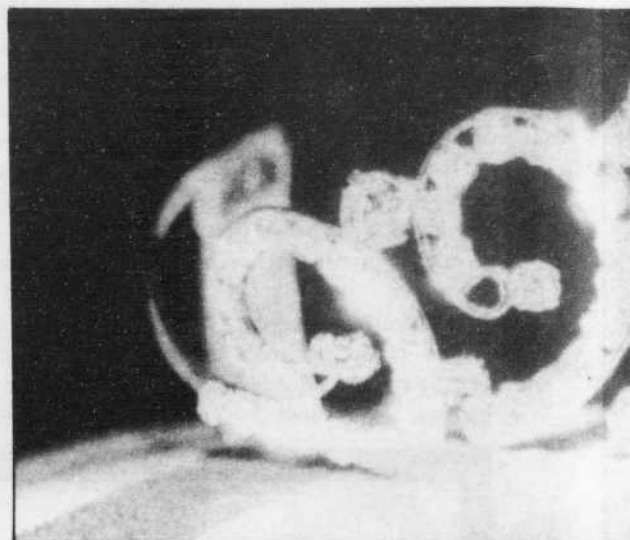
**Kappa Sigma**  
Erin Elisabeth Moody, Hollins '92  
Escort: Paul Howe

Comment: "Although I don't attend Washington and Lee, I value the friendships I've been able to develop. These friendships have incorporated me into the W&L community, a community I'm proud to feel a part of."



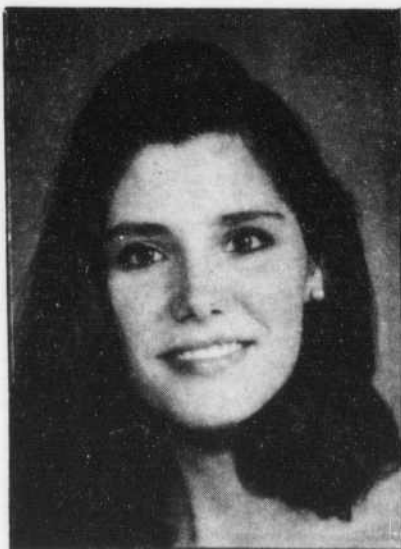
**Lambda Chi Alpha**  
Heather Anne Loveland, W&L '95  
Escort: Will Sheperd

Comment: "I think that I would be a good representative for Homecoming queen not only because I am fresh blood at this school as a freshman, but also because I'm from an area not well represented here...Idaho."



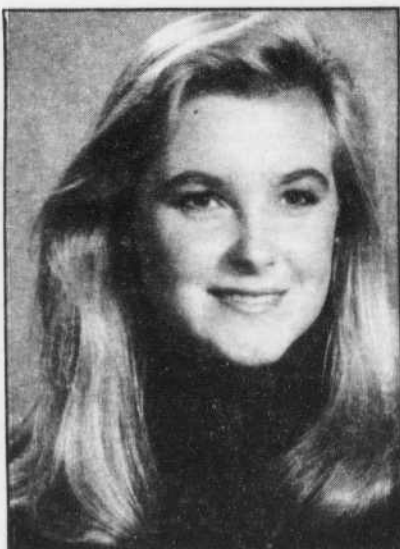
# Who will b

Question: Why do you think you of Washington and Lee as



**Phi Kappa Psi**  
Leslie Henderson Hess, W&L '93  
Escort: David Radulovic

Comment: "Because I'm active in W&L community affairs which shows my great dedication and love for the university."



**Phi Kappa Sigma**  
Jennifer Motley, Hollins '93  
Escort: Carter Lee

Comment: "Hollins College has been part of the W&L tradition for many years. I am proud to represent the Phi Kap house and uphold this tradition."



**Pi Kappa Alpha**  
Jodi Herring, W&L '92  
Escort: Joel Shlnofield

Comment: "Because I'm involved in a lot of different areas, I can represent more than just one group. I feel that I represent what W&L stands for."



**Pi Kappa Phi**  
Karen Ruth Halsell, W&L '92  
Escort: Ryan Kull

Comment: "I have loved my years at W&L and it's an honor to be part of the exciting and fun tradition of Homecoming. I hope everybody has a great weekend!"



**Sigma Alp**  
Beth Hirs, Ma  
Escort: C

Comment: "I'm person and I'm flattered, as a Ma to be nominated queen."



**Tau Delta**  
art, Sweet Briar '94  
Robert Wilson  
od nature and good  
join, to err is human,  
divine."



**Independent Union**  
Erica L. Ingersoll, W&L '92  
Escort: Stephane Montas  
Comment: "I think that my involve-  
ment in the different activities on  
campus shows my pride in being a  
W&L student, and I would be proud  
to be Homecoming queen."



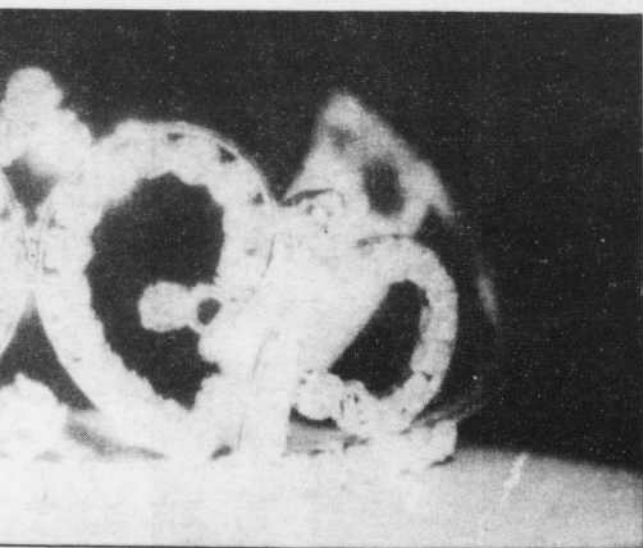
**International Club**  
Jennifer McCann, W&L '93  
Escort: Jeffrey Nuckols  
Comment: "I am a unique individual  
who represents the diverse interests of  
the W&L community."



**Kappa Alpha**  
Ellen Bell Pearson, W&L '92  
Escort: Craig Earl Waites  
Comment: "I can't really say there's  
one thing that makes me the best  
candidate for Homecoming queen.  
I'm just very honored to be repre-  
senting KA in this W&L tradition."



**Kappa Alpha Theta**  
Amy M. James, W&L '93  
Escort: Tom Washmon  
Comment: "I think W&L should  
have one of its own students as Ho-  
mecoming queen."



# be queen?

would be a good representative  
s its homecoming queen.



**Minority Students Association**  
Rita N. Poindexter, W&L '92  
Escort: Keith Faulkner  
Comment: "Because I feel that I am  
best able to understand and appreciate  
the opportunities, the advancements,  
and spirits of W&L."



**Phi Delta Theta**  
Katherine Jackson, Hollins '93  
Escort: Blair Allen  
Could not be reached for comment.



**Phi Gamma Delta**  
Seamane S. Flanagan, W&L '92  
Escort: Scott Alexander Smith  
Comment: "In the three years I've  
been here, I've done my best to take  
part in the many opportunities we  
have at W&L; academically, socially,  
extra-curricularly, and community  
service."



**Phi Epsilon**  
ary Baldwin '93  
Gene Pride  
just a very happy  
very excited and  
ary Baldwin student,  
d for Homecoming



**Sigma Chi**  
Suzie Barton, W&L '93  
Escort: Craig Lang  
Comment: "Washington and Lee has  
been a tradition in my family, I'm  
excited to be here, and I'm excited to  
get involved. Hopefully I can make  
a contribution to the W&L com-  
munity."



**Sigma Nu**  
Andrea Dickson, Sweet Briar '93  
Escort: Timothy Wolff  
Comment: "The Sigma Nu guys are  
great, and although I do not attend  
W&L, over the years I have made a  
lot of good friends here. I feel at  
home here, and I'm honored to be  
able to represent Sigma Nu."



**Sigma Phi Epsilon**  
Lauren Rowland, W&L '92  
Escort: Roger Sullivan  
Comment: "The caliber of students at  
the university is such that any woman  
here would be a candidate of which  
the W&L community could be proud  
to have in its representative or Home-  
coming."



**Student Bar Association**  
M. Beckwith Archer, W&L '93L  
Escort: Raleigh R. Archer, W&L '61  
Comment: "I'm pleased to say that  
I'm very flattered just to be nominat-  
ed. My main concerns this weekend  
are visiting with old friends, drinking  
bourbon and coke, and watching the  
Generals win!"

# Rah! Rah! Rah!

## Cheerleaders once led rallies, game cheers

By Allsha Johnson  
Staff Reporter

They just don't make Homecoming like they used to.

Male cheerleaders no longer lead spirited students in the "Washington and Lee Swing" at pep rallies, and parades featuring pajama-clad freshmen carrying traditional homecoming torches no longer march through downtown Lexington.

Many of the activities which enhanced the homecoming celebration have fallen by the wayside.

According to a former W&L head cheerleader, Leigh Allen, '60, the most important activities during homecoming week were

the fraternity decorations competition and the pep rallies.

"The fraternities used to have decorations for their houses, and an award would be given for the best decorations made," Allen said. "We also always had a pep rally where the cheerleaders would lead the students in cheers. None of our cheers were really unique to the school except, of course, the good ole 'W&L Swing' which all the students liked."

Allen said that tryouts and practices for the cheerleading squad were not very intense, but entertaining nevertheless.

"There were about eight or nine of us on the team," said Allen, who was cheerleader for three years. "Different fratern-

nities encouraged people to try-out, and the captain of the squad picked who he thought was best. There was really no intense competition. We just liked to have a lot of fun. The cheerleaders didn't really take it too seriously."

At one time W&L had a six female cheerleaders, who were recruited from nearby Southern Seminary.

Allen added that a cheerleading squad would help current students get back into the spirit of homecoming.

"I think it would be a good idea for W&L to have cheerleading again," Allen said. "Having women on campus now would make the team even better...at least they would be much cuter to

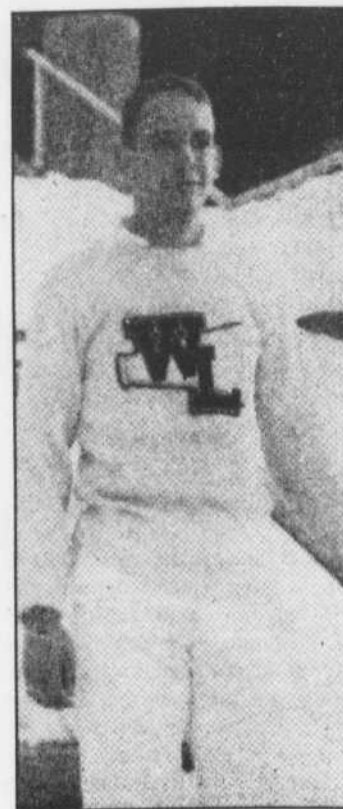
watch. With a little leadership, it [cheerleading] would be an additional feature at the ball game."

Assistant Director of Alumni Programs Rob Mish agreed that steps should be taken to stir up homecoming spirit.

"I don't remember there being anything really special about Homecoming while I was here," said Mish, who graduated from W&L in 1976.

According to Mish, many of the homecoming activities embraced by W&L's student body through the '50s and '60s got pushed aside by the apprehension of the Vietnam War.

"It seems that the parades stopped in the early '70s, around



Allen

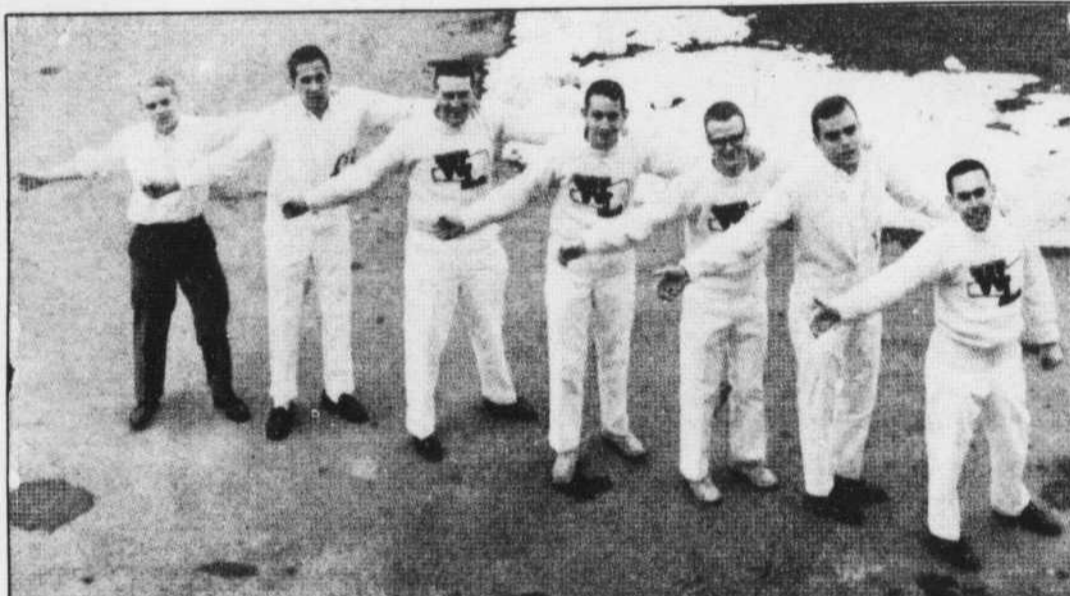
□ Please see RAH page 11

**VARNER & POLE** Furniture Dealers  
For your extra pieces of furniture  
115 S. Main St., Lexington 463-2742

Flowers For All Occasions  
**Good Luck Generals!**  
Specials  
Free Red Rose with each  
Corsage Ordered.  
THE FLOWER CENTER  
463-4521 • Call, We Deliver

Just The Right Touch  
**Hamric & Sheridan, Jewelers**  
Standard 10% Discount With Student I.D.  
703/463-2022  
11 W. Nelson St.  
Lexington, VA 24450

**Now In Stock**  
Sized, wool baseball caps with  
W&L monogram \$16.95  
Also, W&L Sweats and Tees  
**First Team Sports**  
115 W. Nelson St.  
463-3521



Cheerleaders on the 1960 squad practice for the next big game

Calyx photo

# Fa La La

## 'W&L Swing' is still popular

By Nicole Keeler  
Staff Reporter

Though Washington and Lee has long since deemphasized its collegiate athletics department, the "Washington and Lee Swing" has remained for 80 years the most popular and most widely imitated fight song in collegiate history.

According to a Washington and Lee Alumni magazine article written by Robert B. James Jr. the "W&L Swing" has had "had a history as stormy as it is fascinating."

According to James, the melody was originally composed in 1905 by Mark Sheafe, a W&L student from South Dakota. Though he graduated the next year the tune was kept alive by members of the university's

Guitar Club with whom it remained a favorite.

However, the song remained without lyrics until 1909 when two other W&L students, Thornton W. Allen and Clarence T. Robbins heard the music and composed its words, setting the Swing apart as the first victory song ever composed for a university by its students.

The Swing was an immediate success and was quickly adopted by other universities. Many adapted the lyrics with little regard for copyright laws.

James related how both Tulane and Alabama took the Swing as their air. When they faced each other in 1931, the clash caused a great deal of confusion and anger, he said.

The "W&L Swing" has also been used as the theme song for

John Davis, Democratic candidate for President, and a W&L graduate in 1892.

A copy of it was even carried into space on the Shuttle *Columbia* by U.S. astronaut and W&L graduate G. David Low a few years ago. Low and other *Columbia* crew members were later roused by strains of the Swing from NASA headquarters.

In 1958, Louis 'Satchmo' Armstrong played at a W&L Homecoming "and ended on a screaming note with 'Washington and Lee Swing,'" according to one publication.

All this in addition to spurring on countless college and high school athletic teams to victory.

James said that despite its age, the "W&L Swing" is, "the most popular football song ever written."



# Cluster Reunions attract record number of alumni

By Kelly Brotzman  
Staff Reporter

The university's Cluster Reunion Program continues stronger than ever this year with a much less structured format, according to Assistant Alumni Relations Director Rob Mish.

The activity, which gathers graduates of the past four years, was instituted by the Alumni Office a few years ago.

The program attempts to bring the younger alumni back to Washington and Lee for Homecoming weekend, thus laying the foundations for an active group of young alumni and hopefully bettering relations between past and present W&L graduates.

This year, graduates of the classes of 1988 through 1991 will be participating in the Cluster Reunion.

The Alumni Office invited members of the classes by sending them an official program of Homecoming events. They were asked to register for Homecoming so the university may have an accurate count of those planning to attend.

Alumni Staff Associate Chris Baradel said, in the past, few alumni have responded to the invitations, although many attended some of the Homecoming activities. He attributed this in part to the inflexible hours of most new graduate's entry level jobs and graduate school schedules.

This year, however, 132 alumni are registered, the most the program has ever attracted. Mish says this figure actually represents about 170 guests, including spouses and family members, not to mention others who will return to Lexington for other Homecoming-related functions.

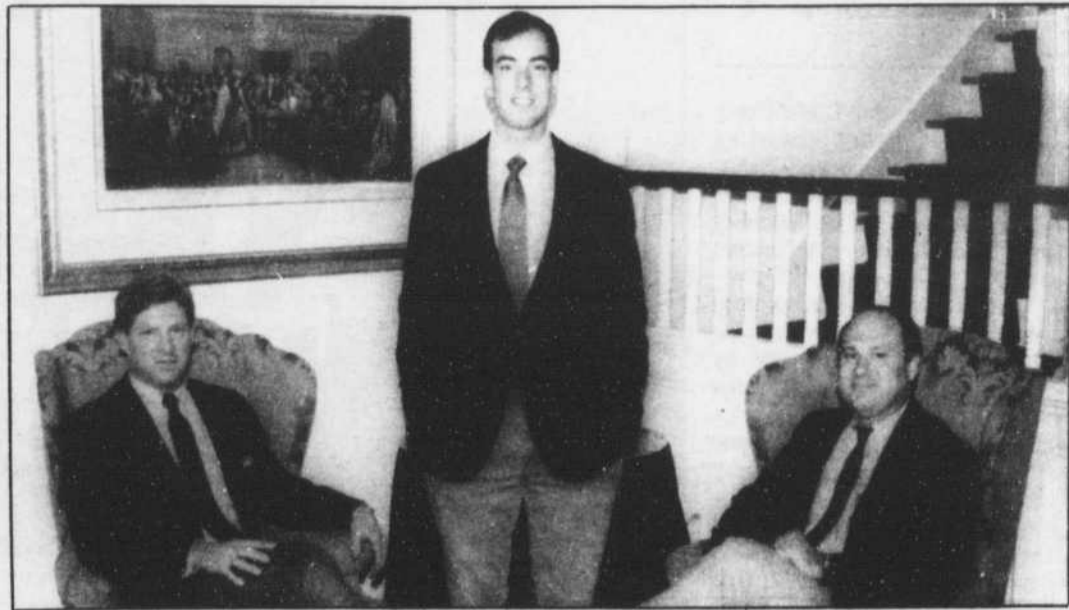


Photo by Leigh Allen, The Ring-tum Phi

The Alumni Office staff is in charge of coordinating alumni activities for Homecoming weekend, like the Cluster Reunion Program. The members of the Alumni Office are (from left to right) Alumni Relations Director Jim Farrar, Alumni Staff Associate Chris Baradel and Assistant Alumni Relations Director Rob Mish.

# Nearly 100 W&L Five Star Generals to return for Homecoming weekend

By Linda Stratton  
Staff Reporter

Of the 700 alumni expected to return to Washington and Lee this weekend, nearly 100 will be Five Star Generals, alumni who were graduated over fifty years ago.

These special men are among one of two targeted alumni groups during this weekend's festivities.

According to the university's Alumni Relations Staff, the Five Star program is designed to give something back to the Five Stars in return for their continued support for the University over the last five decades.

The formation of the Five Star Generals' reunions in the fall stemmed from the popularity of the spring class reunions.

With almost 800 alumni returning each spring, university officials decided that the Five Stars "deserve and need" their own reunion, according to Alumni Relations Director Jim Farrar.

W&L has over 1500 Five Star Generals total, and includes graduates from as far back as 1915. In past years, the number returning for the reunion has rested around 65, and Alumni Staff members say this year's increased expectancy is rewarding.

The Lenfest Center, Lee Chapel, and the newly renovated Sigma Alpha Epsilon house are points of interest for Five Star General John Yarbrough, who graduated from W&L in 1928.

Yarbrough has been back to visit W&L for Homecoming five times, including last year. He says, although he noticed some significant changes, much has remained the same.

Yarbrough said now there is a

more obvious display of alcohol consumption, than when he went to school. "You had to stick your head in the closet to take a drink [back] then," he said. The Five Star Generals are perhaps the most interesting group of alumni visiting this weekend, and they are energetic and enthusiastic about talking with present students. University officials

encourage students to take advantage of their presence on campus and learn a little about the university life of day's gone by.

According to Farrar, W&L is one of the few universities that sponsors dinners, speakers, and receptions for their special alumni, and this demonstration of loyalty is "in keeping with how W&L deals with people."

## W&L Swing

*Come cheer for Washington and Lee,  
We're going to win another victory;  
The White and Blue we will ever wave  
in triumph,  
For the University. RAH! RAH! RAH!  
Fight to the finish we are with you,  
Break thru the line on every play;  
Rush the ball on down the field and  
we will win this game today.*

*When Washington and Lee's men fall in  
line,  
We're going to win again another time;  
For W&L I yell, yell, yell  
And for the University; I yell like hell  
And we will fight! fight! fight! for  
every yard;  
Circle the ends and hit that line right  
hard!  
And we will roll those Wahoos on the sod!  
Yes by God! RAH! RAH! RAH!*



Welcome W & L  
Alumni & Parents

We Invite You to Enjoy Our  
Hero Sandwiches on  
Freshly-baked French Bread  
Savory Soups & Fresh Garden Greens

Pasta, Pesto & Potato Salads  
Old-fashioned Fruit Pies & Fancy Chocolate Desserts  
Mighty Muffins, Cinnamon Rolls & Croissants  
Cappuccino & Espresso  
Imported Beers & Wines

Let us pack your tailgate picnic  
Call ahead for takeout orders before the game

Open Sundays 10 a.m.  
Mostly Jazz Trio 11 to 1

Patio Open  
Bocce ball • Pool • Darts

Harbs'  
A Bistro

BREAKFAST/LUNCH/DINNER  
(Old Lloyd's location)  
19 W. Washington Street • 464-1900

# Greek organizations plan bands, parties for weekend

By Kerry Egan  
Staff Reporter

Washington and Lee's Greek organizations have planned a variety of events around Saturday's Homecoming football game.

Below is a list of fraternity and sorority activities for before and after the game.

**Beta Theta Pi:** Informal drop-ins for alumni on Friday and on Saturday. Pre-game speeches by Sen. Warner and B. Hume Morris will speak, followed by a luncheon. Saturday evening band party with the *King Pins*. Sunday brunch for alumni.

**Chi Psi:** Saturday post-game cocktail party and banquet. Saturday night band party with *The True* will be performing at the house.

**Delta Tau Delta:** Private party before Friday's concert. Pre-game tailgate party Saturday. Saturday night band party featuring *Playground* with Fiji.

**Kappa Alpha:** *Down Boy Down* Saturday afternoon. Evening band party with the *Megaphonics*.



File photo

**Kappa Sigma:** Private party before and after Saturday's game, with *The Usual* performing that evening.

**Lambda Chi Alpha:** Pre-game cocktail party Saturday at the house with band party featuring *World Without Fear* later that evening.

**Phi Delta Theta:** Friday afternoon cocktail party. Pre-game cocktail party Saturday at the house. Saturday night band party featuring *The Issue*.

**Phi Gamma Delta:** Pre-game cocktail party. Saturday night band party with Delta Tau Delta at the Delt featuring *Playground*.

**Phi Kappa Psi:** Saturday tailgate party at the football field. Saturday night band party at Fred's Auto Body with *The Mighty Majors*.

**Phi Kappa Sigma:** Post-football game party Saturday with SAE at Phi Kap featuring *The Mighty Majors*. Saturday evening band party at SAE with *Question of Balance*.

**Pi Kappa Alpha:** Saturday pre-game tailgate at the field. Guitar player at the house after the game. Saturday evening party with *Lost in the Supermarket*.

**Pi Kappa Phi:** Saturday evening band party at Zollman's with *The Stegmonds*.

**Sigma Alpha Epsilon:** Open house Friday for alumni. Post-game party Saturday at Phi Kapp with *The Mighty Majors*. Saturday night party with *Question of Balance*.

**Sigma Chi:** Informal drop-ins for alumni Friday. Saturday pre-game ground breaking ceremony in Davidson Park at 1:00. Tailgate party at the football field, post-game cookout in the country with *Wildgrass*. Saturday night band party with *The Jank Twins*.

**Sigma Nu:** Saturday tailgate party at the football field. Post-game cocktails at the house for alumni. Dinner in dining hall and a party at the house with *Everything*.

**Sigma Phi Epsilon:** Friday party before the concert. Saturday evening band party with *Tropical Johnson*.

**Chi Omega:** Pre-game tailgate at ruins.

**Kappa Alpha Theta:** Post-game gathering at ruins.

**Kappa Kappa Gamma:** No plans at press time.

Several Greek activities are for members and their guest only.

Above: Students party at Zollman's Pavilion during the '70s. Below: Homecoming decorations adorn the Delta Tau Delta house in 1959



Calyx file photo



## Jill's a Lady

*Welcome Back W&L*

We have a full line of clothes for the well dressed Co-ed

Robert Scott Sweaters - David Brook Sportswear  
Skr Turtlenecks  
(long sleeves & sleeveless)  
Colors Galor


126 S. Main St. 463-5434

## HUNAN GARDEN CHINESE RESTAURANT

Authentic Chinese Cuisine  
Luncheon Specials • Extensive Dinner Menu  
Beer • Wine • Exotic Cocktails  
Catering Available

Sunday Buffet 11:30 A.M. - 3:00 P.M.  
Lunch and Dinner 7 Days A Week 11:30 AM-10 PM

Complete Carry-Out Menu  
**463-3330**  
E. Nelson Street Lexington (Behind McDonald's)



463-3106 167 S. Main St.

## Go W&L!

*Beat Davidson this weekend and after the game stop by and see us for all your grocery and party needs. Charge accounts still available, so if you don't have one this year, stop by this weekend and open one up. Have a great homecoming weekend.*

**Serving The W&L Community For Over 35 Years**

## C.E. Hardy Jeweler

35 S. Main Street  
463-4121

**ADRESSERS WANTED immediately!** No experience necessary. Process FHA mortgage refunds. Work home. Call 1-405-321-3064.

### University PRINTING CENTER

1st Floor Reid Hall - 463-8448

Come to your Printing Center for:

• Flyers and Posters	• Custom Resumes and Letters
• Copying and Printing	• Transparencies
• Programs	• Brochures and Booklets
• Newsletters	• Scanning

The Printing Center offers quality service, on-campus convenience, fast job return, and competitive pricing. We have a Macintosh IIx which can read IBM disks. Scanned images can be added to your campaign or organizational flyers for that individual appearance. Need a high resolution output? We offer our Linotronic 200SQ. Our services cover University and non-profit organizations. Stop by today!

# RAH

from page 8

the time that Fancy Dress went out," he said. "When students found out they had the Vietnam War to deal with, the idea of Homecoming spirit wasn't a priority. Fancy Dress started up again in 1974, but a lot of the homecoming activities never came back."

Mish expressed interest in seeing the "Torchless Torchlight Parade" return to Washington and Lee. According to a Ring-Tum Phi article dated Nov. 6, 1959, the fiery parade through town followed a pep rally each year to open the festivities for W&L's homecoming weekend.

"Freshmen will wear pajamas to the pep rally and for the parade which follows," the article stated. "Leading the parade will be...members from the ROTC and University band. Following the band will be cars carrying the various fraternities' Homecoming queen nominees, and then the pajama-clad frosh."

On behalf of the univeristy, Mish said "The Alumni Office is very aware that [Homecoming activities] have gone by the wayside. For this reason we have given Kathekon more responsibility with Homecoming this year. In talking to the group, the students seem very interested."

Kathekon President Laura Pilachowski said she would like to see the organization bring spirit back into Homecoming. For example, she said Kathekon is trying to get the "W&L Swing" printed on cups which will be passed out at the football game.

Pilachowski said she would like to see such activities as fraternity decorations and parades begin again, as well.

# LEE

from page 3

a group of W&L students and employees interested in Civil War reenactment, will march from Washington Hall on the W&L campus to Lee Chapel for the memorial service, according to a campus press release.

The invocation and benediction will be delivered by Louis W. Hodges, professor of religion at W&L.

Joan Brooks of the Virginia chapter of the United Daughters of the Confederacy will also speak, along with W&L sophomore Christian Keller who will read from Douglas Southall Freeman's *R.E. Lee*, the passage in which the general's last words are spoken.

The service will end with the music selections by Southern Comfort and JubiLee, and will include General Lee's favorite hymn, "How Firm a Foundation."

# PAST

from page 2

On Saturday night a dance, In 1971 Homecoming was nothing but a small picture in the *Phi*, would be held in a lavishly decorated Doremus Gymnasium. Beginning in 1957 with the first Homecoming Queen, the Queen would be crowned at the dance. Until last year, Dr. Shillington had kissed all of the Queens with very few interruptions.

The last mention in the *Phi* of a house winning a decorations award was Lambda Chi in 1969, and a writer in that same issue wrote, "It seems that for the most part, an alumnus returning to campus is a lonely experience."

By 1970, the only mention made in the *Phi* of Homecoming was that it existed and there would be a concert Friday night and the game Saturday followed by a grain party in Red Square sponsored by the sophomore class.

In 1971 Homecoming was nothing but a small picture in the *Phi*, in the lower left hand corner of the front page, of Shillington kissing the Queen.

But W&L was never a big school. The teeming thousands that once filled Wilson Field are back to a scale more in line with a small college. But some things here will never change.

On that first Homecoming Day, back in 1925, former W&L President G.H.Denny praised W&L with words that still hold true. "Take away from many a college its endowment and what is left?" asked Denny, "But strip the Washington and Lee Campus of every building and every dollar, and there are left some things more precious than silver and gold." That hasn't changed.

## *Come You Back to Washington and Lee*

*By the banks of Old North River,  
Winding lazy 'round the hill,  
To the dear old college campus  
My thoughts are turning still;  
For the college bells are calling,  
And I know they say to me,  
Come you back you old Alumnus,  
Back to Washington and Lee.  
Ship me back to Old Virginia  
Where the summer skies are blue;  
Where the gods walk on the hill-tops  
In the sunsets rosy hue;  
For I've heard their voices calling,  
And its there that I would be,  
In the shadow of the mountains-  
Back at Washington and Lee.*

**Financial Aid available Immediately! Special grants program. Every student eligible. No one turned down. Simple application. Send name, address and \$1 P&H fee (refundable) to: Student Services, P.O. Box 22-4026, Hollywood, FL 33022.**

**Party Pic Photographer - W&L**  
Eager, Responsible, Reliable. Car and basic photo skills preferred. Call 1-800-235-5101

## *The Style House*

**Welcomes  
W&L Alumni  
Enjoy Your Stay!**

Operators: Irma, Ann, Maxine, Mary

122 S. Main St.

463-5954

# DAVIDSON

from page 1

Davidson and W&L haven't met on the football field since 1978, during Head Coach Gary Fallon's first season at W&L. Davidson, then Division I, won easily 34-7. But in the two college's football history, a Davidson win has been the exception rather than the rule.

Both schools were members of the Southern Conference in the 1940s and early 1950s and did battle on the gridiron for 13 straight years. W&L dominated the series, winning 11, losing one and tying one. In overall games, W&L holds a 13-8-1 edge, Davidson has won in the college's last four football games since W&L dropped athletic scholarships in 1954.

"The rivalry has seen good athletic competition in the past, and we look forward to continuing the tradition," Walsh said.

Walsh announced that Saturday's football game will be the first in a string of renewed competitions with Davidson. Because Davidson is Division I in other sports, he said it will be difficult

for W&L to maintain a rivalry with the Wildcats.

"It's a decent rivalry," said Walsh. "They are a school that we want to play, and enjoy playing against, but that's mostly in individual sports. They have a little bit of an upper hand because they are Division I."

Walsh said he hopes that the athletic competition will again grow to the level it had reached before the teams stopped playing each other.

Both teams will enter Saturday's game with struggling records. Davidson is 1-3 while W&L is 0-4. Davidson's strength lies in its running game, led by freshman fullback Bruce Bannister and quarterback Richard Howell. Bannister has run for 287 yards on just 36 carries, and Davidson averages 192 yards rushing per game.

W&L has struggled offensively, averaging just 98 yards per game. Senior Jeff Kreis leads the team with seven catches, and senior George Sakin and junior Wade Robinett each have six.

## *Sixty West*

TOWNHOMES in LEXINGTON, VIRGINIA



Twenty six townhomes - private and exclusive - designed to complement the historic charm and integrity of Lexington's heritage. Situated within the western city limits, close to the Virginia Military Institute and Washington and Lee University, the residences are enclosed by a limited access perimeter road with barrier landscaping and face a large common green. The architecturally distinctive townhomes are offered in one and two story designs for tasteful and comfortable living. They feature unique floor plans ranging from 2300 to 3000 square feet including attached two-car garages with lofts, vaulted and 9 foot ceilings, balconies overlooking living rooms with fireplaces, private patios and gardens. General external maintenance, contracted by the Owner's Association, means care-free living for the property owners. Priced from the \$180,000's.

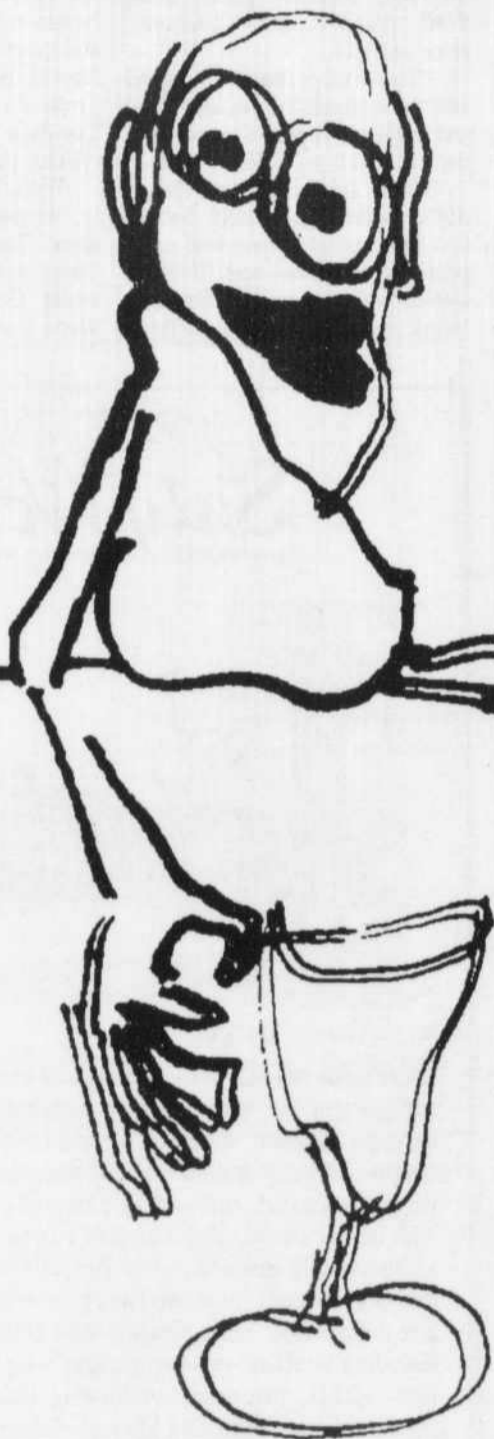
For more information call (703) 463-3332 or write:

**SIXTY WEST**  
Post Office Box 1577  
155 1/2 South Main Street  
Lexington, VA 24450

WASHINGTON AND LEE  
STUDENT ACTIVITIES BOARD  
PRESENTS

# SQUEEZE

*with guests*



**FRIDAY, 9 P.M.  
THE PAVILION**

**TICKETS: \$8 ADVANCE, \$10 DOOR**

AVAILABLE FRIDAY LUNCH IN FRONT OF CO-OP, AT LAW SCHOOL AND IN D-HALL